

The New Isothermal Hotel

BOX 66

Rutherfordton, N.C.

January 24-32

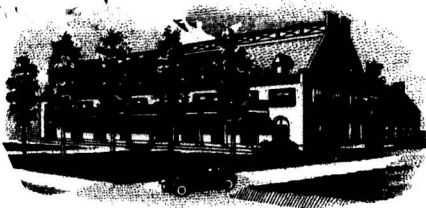
J. T. Mc GREGOR, MANAGER

Miss Kate Tarbell
New York City,

Dear Miss Tarbell,

Four ago when a subscriber to "de blue" I read with great interest your Standard Oil stories, and still later "The Knew Lincoln" and at the time was fully entertained. But sometimes I skip the details, and probably you have covered what I wish to ask you, or it is possible this obscure publication missed your keen and discriminating eyes. However, this is it: "Lincoln was born here in Rutherford County, near what is known, or rather on the "Abraham Enloe" place near

Digitized Image, 2009. The Ida M. Tarbell Collection, 1890-1944, Allegheny College Pelletier Library



J. T. Mc GREGOR, MANAGER

The New Isothermal Hotel

BOX 66

Rutherfordton, N.C.

Puzzle book, about two
miles from Postie "

This is in a published
volume by

J. S. Duggins, Ph.D. LL.D.

Pub. by Carolina Pub. Co.

Gastonia, N.C.

copyright 1927

Have you any reference
to this in your work?
or had you found these claims
and were unable to verify them.

Would greatly appreciate a reply
at your leisure.

Yours very truly

Frank R. Porter,
Isothermal Hotel.