

THE **KALDRON** 1964

CELEBRATING ITS
75TH ANNIVERSARY

ALLEGHENY
COLLEGE

MEADVILLE, PENNSYLVANIA

In cooperation with the faculty, administration, and students of said; especially Mr. H. P. Way, advisor; Mr. Philip Benjamin, historical resources; Mr. Robert Stanton and Mr. Robert Purdy, photography; Mr. Andy Shapiro and Miss Carol Fetcko, invaluable assistance; Mr. Don Messinger, of Wm. J. Keller Inc., technical advice; and G.D.A., moral support.

JANICE A. GILIBERTY, EDITOR

In the seventy-five years since its birth, the *Kaldron* has seen over seven thousand hopeful young men and women leave Allegheny's campus to meet the challenge of a world alternately faced with war, depression, and global tension. But perhaps it is only once in a hundred years that the *Kaldron* can pay tribute to a man who has dedicated three-quarters of a century to doing. Such a man is Ralph Cole: class of '09, construction engineer, oldest and highly distinguished member of the Peace Corps. It is to Ralph Cole that we dedicate this book to commemorate a dual anniversary, marking seventy-five years of achievement.

The 1909 *Kaldron* called him " 'Little Hemo' . . . a modern Beau Brummel, with the agility of a young hippo." Big and energetic, he was center on a football team, coached by Branch Rickey, who at that time was teaching his boys a startlingly new play—the forward pass. In contrast, he was also a member of the Mandolin Club. But evidently strenuous physical activity was more his line, because he claims he had a hard time getting through a Latin course!

Following his graduation from Allegheny, Cole worked for an Ohio railroad company and then moved to Louisiana and Texas where he did construction work mainly for oil companies. In 1924 he settled with his family in Dallas, Texas, and continued to work as a self-employed engineer. Sixty-five was no decent retirement age for a man of such youthful vitality, so Cole turned his interests to a private engineering practice until he made application to the Peace Corps in 1961.

For the past two years, Ralph Cole has served as senior District Engineer for Mardan District in the Northwest Frontier Area of West Pakistan, where he is affectionately known and respected as "Uncle Cole." In his work, he was primarily concerned with modern surveying techniques and the better construction of more efficient roads. He helped design and supervise the construction of schools, community buildings, and village drainage systems that are sadly lacking in underdeveloped rural Pakistan.

Cole's interests in Pakistan were not limited to the technical. He travelled extensively, talking with the people, including the President of the country, about a variety of topics, excluding only political issues. To the question always asked of Peace Corps volunteers, "Why does the U.S. continue to give arms to India when India makes no effort to make a fair settlement of the Kashmir dispute?" Cole gives the wry answer: "I don't know—they never consulted me about it." It is the sentiment of the Peace Corps volunteers and Staff in Pakistan that "Uncle Cole" is not only the oldest member of the Peace Corps, but also one of its most outstanding "Alumni."

To Ralph Cole, and in memory of John F. Kennedy, whose spirit will live on in the work of the Peace Corps: The 1964 *Kaldron*.





ORIENTATION WEEK



College: the word hovered over the heads of four hundred thirty-five high school graduates from June until September, 1963. Its connotations were many, but none of the four hundred thirty-five could do more than speculate. Now, after having completed that unique period of our lives, first year at college, we smile at some of our pre-freshman expectations, and, again, we are confronted with a new set of questions for our future.

Perhaps we have made mistakes this first year, but suddenly we have begun to realize what life is. We know now that college is not a whirl of social activities, nor is it a time of isolation. Our freshman year at Allegheny has taught us to respect the opinions and feelings of others, to know our own limitations, to experience disappointment and humiliation without their marring our outlook on life.

Still, we stop and wonder if college is what we want it to be, if we have made a wrong turn somewhere, or if, after three more years, we shall have fulfilled our purpose. It is then that we must examine ourselves, our attitudes, and our actions. Through this process we are beginning to learn that not all the knowledge enclosed within these ivy-covered walls comes from our courses. Freshman year is a time of learning more than mere facts; it is a time to know ourselves, to know others, to know our convictions. Most important, we have learned that what we were doesn't matter; what we are, now, does.

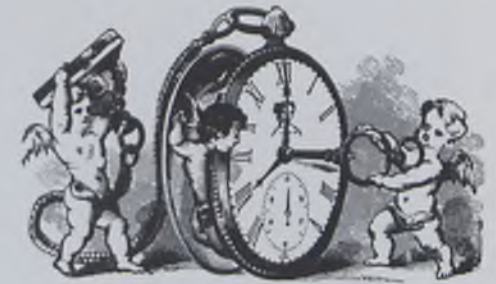
Being a freshman is a wonderful experience. It's rebelling against the sophomores by wearing the Allegheny dink and namecard backward, upsidedown, and/or insideout. It's trying to discover during Orientation Week which way Bentley Hall faces, what the tune is to the Alma Mater, and where the Lord's Gates are located. It's discovering new words and regulations such as MORES and AWS, 8:30's, how many late minutes girls have, and 4-3251 ext. 233, two rings.

Being a freshman also gives you the unofficial right to throw certain sophomore class officers into a certain body of H₂O at the Freshmen Picnic, have shaving-cream and water battles at Baldwin and Cafish, all-night "discussions" at South and Walker, and attend mixers at the C.U. and Fraternity teas for the women, round-robins for the men.

But more than all the fun of Orientation Week and the prestige that accompanies the very impressive title—college freshman—is the new sensation of trying uselessly to hold onto the past and yet eagerly search for the future.



RETURN OF THE UPPERCLASSMEN



A few days after the bewildered freshmen arrive on Allegheny's campus, the veteran upperclassmen return, prepared by experience for the lines at registration, the problems that come from making schedule changes, and all the rest of the confusion found in those first days back. Also, the social side of college life is humming. People are busy greeting old friends and meeting new ones, and the many campus organizations are reorganizing and scheduling various activities for the busy year ahead. Soon though, classes begin and the upperclassmen turn with renewed interest to their subjects, seeking to gain more knowledge so that they may be of value to their nation after leaving Allegheny.



J
U
N
I
O
R
S



S
O
P
H
O
M
O
R
E
S



F
R
E
S
H
M
E
N



J
U
N
I
O
R
S



And more freshmen . . .



S
O
P
H
O
M
O
R
E
S



F
R
E
S
H
M
E
N



FOREIGN STUDENTS

Each year Allegheny plays host to, shelters, guides, and educates a number of international students. For the most part, these students are chosen to come to this country for their scholastic endeavors; however, their stay at Allegheny, be it for one year or more, plays an important part in gaining or losing friends for the United States, for the "American Way," for international cooperation and understanding.

The Allegheny foreign student is introduced to Americana and familiarized with the habits and customs of the people. The most important aspect of such a confrontation is more than the impressive New York skyline, more than the expansive areas for farming, more than the quaintness of the Pennsylvania Dutch, or the maddening motion of our cities, more than the large automobiles and the complex highway systems. Year after year, it has been the consensus of opinion that the development of close personal relationships is the most important factor and the most powerful force for understanding.

Allegheny gathers knowledge from its international guests as it disseminates it; this is a two way process. To implement this program, the Allegheny Foreign Student Committee endeavors to aid its "little brothers and sisters" in all ways.

Ivy Mok, Ivor Fields, Samih Khuffash, Joyce Preston, Kessie Dachi, Annegret Monk, Ozani Delavore, Betty Anguiano, Nester Caldero.





On October 26, Allegheny played host to returning Alumni. Friday night began the festivities with a pep rally and the presentation of the play, *Take Her, She's Mine*. Saturday dawned clear and bright, much to everyone's surprise. A picnic lunch was served at Robertson Field and students and alumni alike gathered at the serving tent. Be-

HOME COMING



fore the game, Kaye Wynn was crowned Homecoming Queen, and Mr. Gator performed for the visiting alumni. The cheering crowd then witnessed Allegheny defeat Wayne State. Cider and doughnuts followed the exciting victory. The activities concluded with the traditional homecoming dance on Saturday evening.



THE PLAYHOUSE

An adventure into creativity, a workshop of imagination, a yardstick of talent and time, hard-work and a little luck are the component parts of the Allegheny Playshop, or of any theatre. It is a place for hopes and dreams to be realized or shattered and for endless hours to be spent working on what the many people involved hope will turn out to be a successful production.

"Places everyone . . . On Stage"—the lights in the theatre slowly dim out and another world is revealed. For those who love this world, it is magical, mysterious and wondrous; a place to escape, a place for self-expression and fulfillment.

The Allegheny Playshop is for anyone. That is, anyone interested in being connected in any way with magic and lights. It is for experimentation, analagous to a laboratory, where talent can be explored, can be improved and matured and perhaps, a future decided.





"You never have time to learn. You are thrown in, taught the rules, and the first time they catch you off base they kill you"



PUBLIC EVENTS ARTIST SERIES

The Artist Series provides Allegheny students with the opportunity to view exhibits and attend concerts and performances which otherwise would be unavailable to them. These experiences serve to fill a lack in Allegheny's cultural expression as well as providing an aid in furthering the students' aesthetic development. In the process of maturation this continued exposure to the arts opens a new field of interest and enrichment. Made available to the community, the series also serves as a link between the college community and the citizens of Meadville.



The fall season began with a recital in Ford Chapel by Rey De La Torre, Classic guitarist. Shanto Rao and her company of dancers and musicians of South India concluded the term with their performance at the Meadville Area Senior High School.

The Sheridan String Quartet highlighted the winter season.

In April, Henry Cowell gave a lecture and a concert of some of his works. The Chapel Choir and various members of the college community also participated.

Art exhibitions were on display at both Brooks and Murray Hall throughout the year. Leonard Bashin showed his prints. Paintings and pictures by Douglas Pederson were displayed in November. Another of the varied displays exhibited was the pottery and weaving of Toshiko Takaezu.



6364





LECTURE SERIES



This year, a new Credo series was adopted. In this series, members of the faculty presented what they "believe." Among the speakers were President Pelitier, Dr. Hutcheson, and Dr. Reisner.



Each year, Allegheny is privileged to have many outstanding lecturers visit the campus and present their views on various subjects. In November Dr. Walter Roberts, Phi Beta Kappa Visiting Scholar spoke at a Thursday night program and lectured in many classes. Dr. Carl Michaelson, The Voegtley Lecturer spoke on Theology; and Craig Truax presented a view on politics.





CONCERTS

Each term the Allegheny campus is presented with at least one outstanding evening of entertainment by world famous performers. First term the students were superbly entertained by the Four Preps. These four young men delivered two hours of zany antics interspersed with ever-popular melodies.



Second term the campus was entertained by the Reverend Gary Davis, blind street singer, who offered an evening of his famous "Holy Blues."



Maynard Ferguson, world famous jazz trumpeter, thrilled a large receptive audience second term also. The concert opened with the old standard "Almost Like Being in Love" and ended with the driving, fast tempo of "Ole" featuring Ferguson in one of his penetrating solos.





R.O.T.C. QUEENS

This year's R.O.T.C. Ball crowned Miss Nancy Gilmour its Queen. A Freshman from Norwood, N.J., the lovely Miss Gilmour is a Modern Language major. Her court: Judy McCann, a French major from Syracuse, N.Y.; Karen Getty, from McKees Rocks, Pa.; Dee Johnson, a Psychology major from Sharpville, Pa.; and Nancy Neuendorffer, an Elementary Education major from Alexandria, Virginia.





Chanel 64-the ASG Television Network-exuberantly revealed a surprising amount of talent among Allegheny's Student body (including some with a slippery skill for avoiding money collectors) and fulfilled both purposes of the Variety Show: to make money for the Fund Drive, and to put on a Good Show. The annual production is completely student produced-although it welcomes faculty participation-and provides a unique experience in that people are respected for their ability rather than their political position. Anyone is welcome to offer his special talent, regardless of race, religion, or social group. There are headaches and hard work involved, but how else is anything worth while produced?





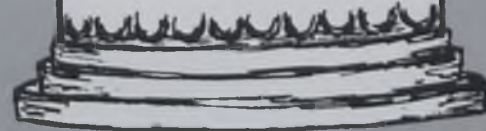
GREEK WEEK



1963

Greek Week 1963 was held during the third term. On Friday night Alpha Xi Delta and Sigma Alpha Epsilon won first places in the fraternity and sorority singing. Phi Delta Theta and Kappa Kappa Gamma shared the second place honors.

On Saturday evening a dance was held at Brooks Hall.

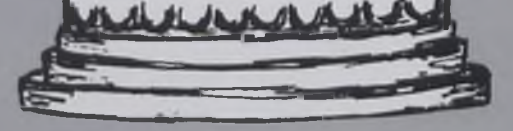
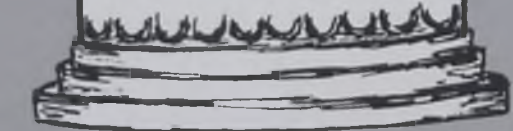
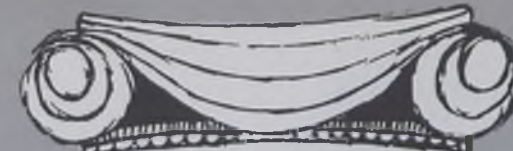


1964

Greek Week 1964 began with the traditional Greek Sing on Friday, February 21, 1964. Alpha Xi Delta won first place for the sororities by singing "Quest" and "In the Still of the Night," and Phi Delta Theta led the fraternity competition with "The Battle Hymn of the Republic." Honorable mention was given to Alpha Chi Omega and to Theta Chi.

The Greeks spent Saturday afternoon at Bousson where tobogganing and winter games were enjoyed.

Greek Week was completed with a casual dance in Brooks Hall on Saturday night.



Judy McCann, an elementary education major from Syracuse, New York, was elected Junior Charm Queen and represented her class in the May Court.

Sophomore Charm Queen was Linda Cooper, a sociology major from Pittsburgh, Pa.

Nancy Gilmour was chosen Freshman Charm Queen. A modern language major, she is from Norwood, New Jersey.

MAY COURT 1964



Allegheny's May Queen for 1964 and her court were selected by a vote of all the students and conducted by A.S.G.

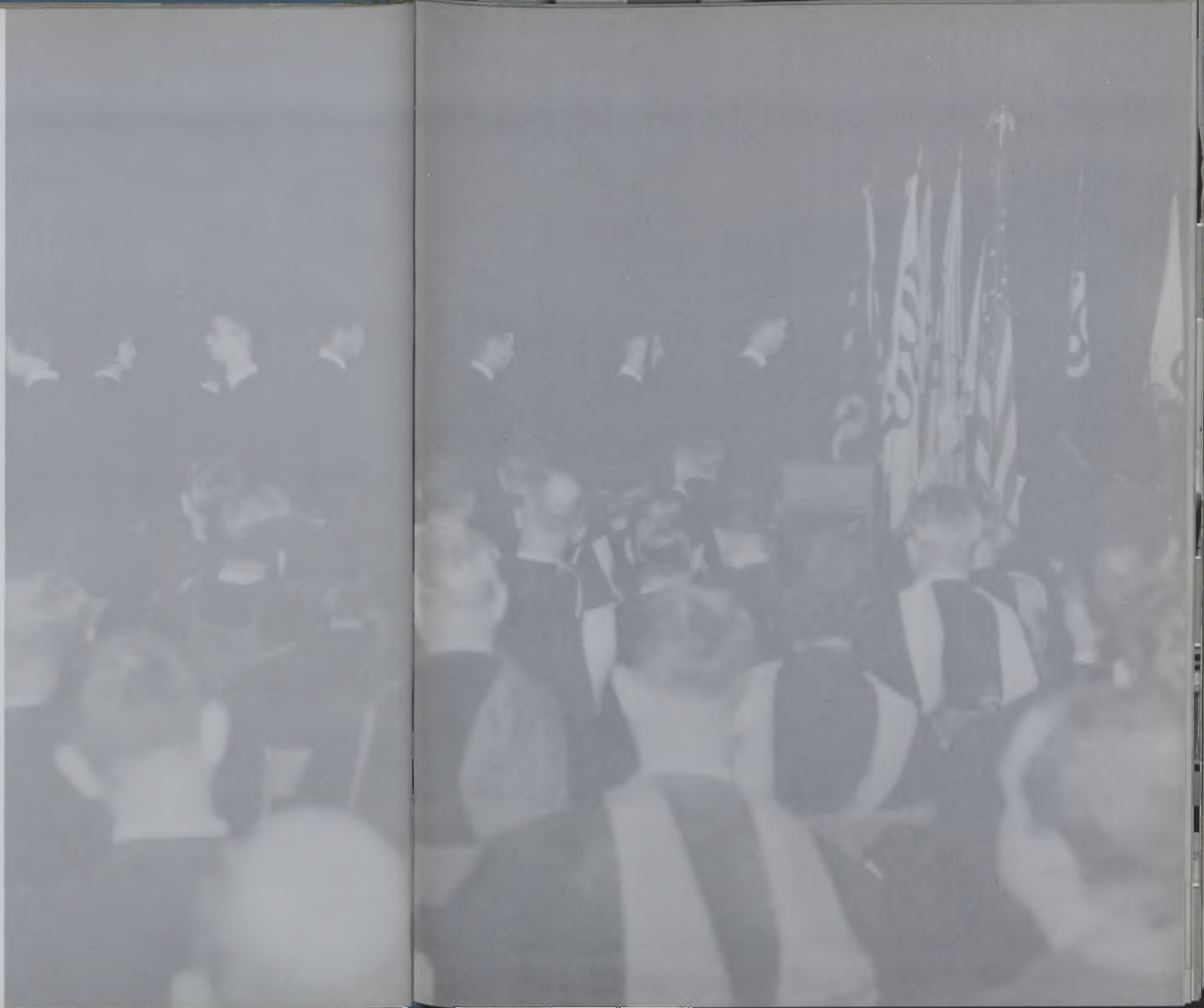
The May Queen is Nancy Griffin, an English major, from Pittsburgh, Pa. Senior attendants are Jane Lindsay and Barbara McMurray. Jane is an elementary education major from Poland, Ohio, and Barbara is an English major from Washington, Pa.





ALDEN SCHOLARS

With the solemn strains of the processional ringing in their ears, amid all the bright and festive robes of their professors, the Alden Scholars of 1963 marched into the Fieldhouse on November 6. They came, as in previous years, to reap the reward of college acclaim for their achievements. After receiving their certificates and, in some cases, Huxley's book *Literature and Science*, listening to Clinton Rossiter's address, "What's a College for?", and seeing Maron Brown, Gary Hickernell, Susan Werner, and Richard Wodzinski honored as Phi Beta Kappa scholars, they filed out. They came to receive acknowledgement and to give inspiration to others; they left with their own torches of ambition lit anew.





COMMENCEMENT

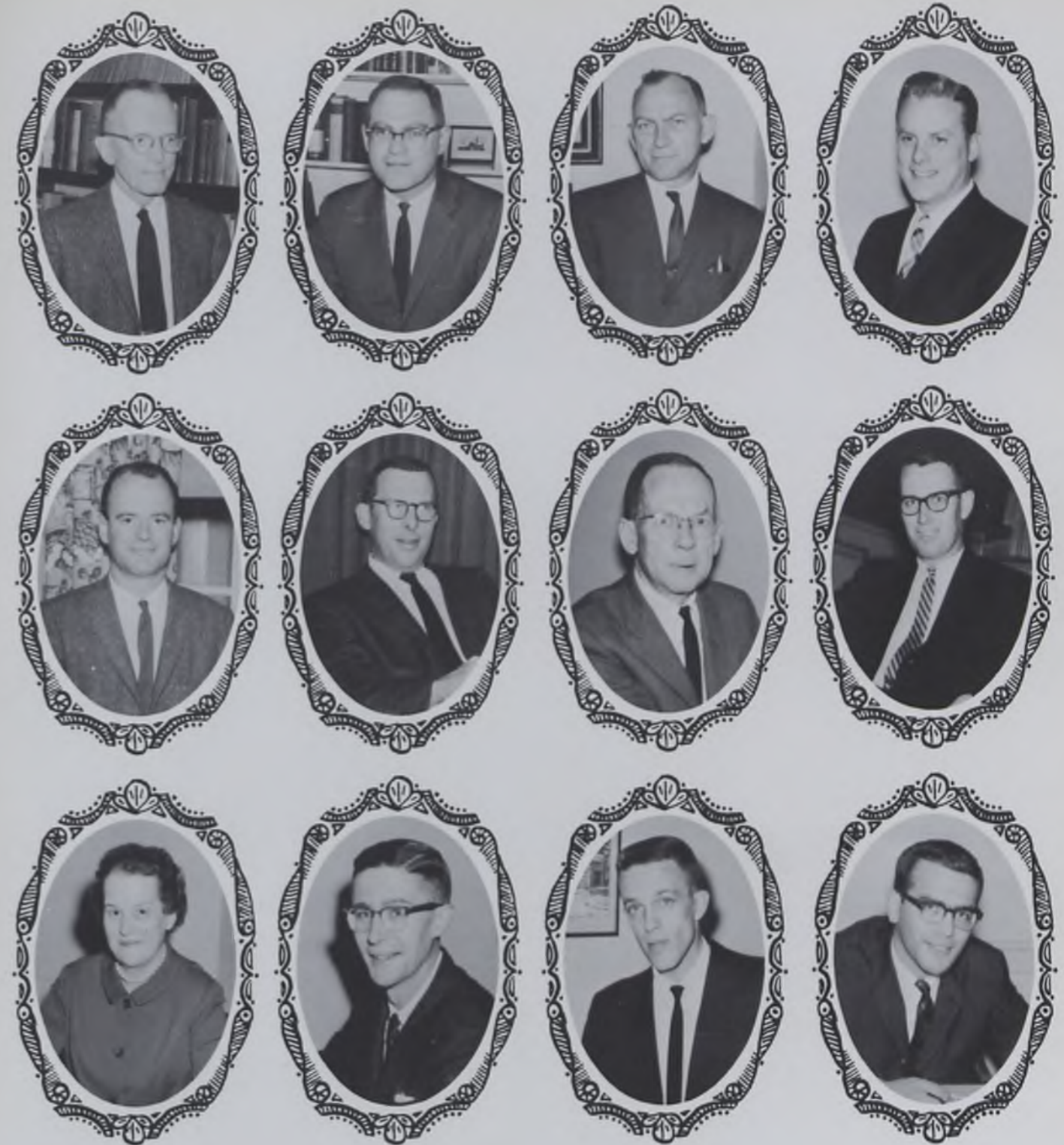
Life has its beginnings at many points. The infant cries at birth, the young child realizes disappointments at the denial of his demand. The adolescent struggles with the problems of budding maturity. Here we stand at the next threshold. Searching, we seek to discover our position in the society of which we are a part. Our foundations have been laid, our basis set, our contributions await fulfillment.





OUR PRESIDENT

Allegheny College is proud of its past, and it finds in its strength to face the future with confidence. We believe that Allegheny will play an even more important role in the years ahead: the liberal arts, including the sciences, will have even a greater relevance to man in the future and will provide the values necessary to integrate a world marked by its specialization and its dynamic character.



ADMINISTRATION

ROW 1: JULIAN L. ROSS, Ph.D., Dean of Instruction; ROBERT T. SHERMAN, A.B., Director of Development; ALLEN B. EDWARDS, Ph.D., Treasurer; VICTOR R. ZACK, JR., M.S., Director of Admissions. ROW 2: JOHN R. O. McKEAN, Ed.D., Dean of Students; RICHARD M. MADDY, M.A., Business Manager; ROBERT L. MURPHY, A.B., Director of Public Information; RICHARD A. STEWART, B.A., Ass't. Director of Admissions. ROW 3: RUTH W. KNIGHTS, A.B., Assoc. Dean of Students; KENNETH N. STEWART, A.B., Auditor; RICHARD J. RUHLMAN, A.B., Alumni Secretary; WILLIAM W. BUGBEE, A.B., Admissions Counselor.



WILLIAM P. JACKSON, P.
Director of Counseling



JOHN W. JONES
Director of College Men



ROBERT K. JENKINS
Director of the Placement Office



PARSON



WILBUR S. FRY
Superintendent



ELIZABETH HUTCHINSON, M.A.



PHILIP M. BENJAMIN, A.M.
Librarian



AGNES E. PAINTER, B.S.
Asst. Librarian



DOROTHY J. SMITH, M.A.
Asst. Librarian



SHIRLEY H. TOWNSEND, M.S.
Director of Food Science



SARA A. SCHAFER, A.B.
Dietitian



JOHN E. LEWIS, M.D.
College Physician



RUTH STRAUSBAUGH
Mead Nurse



EXECUTIVE BOARD OF TRUSTEES—SEATED: D. Armour Hill, Lawrence L. Pelleiter, Robert L. Kirkpatrick, Robert S. Bates.
STANDING: Charles N. Telfer, Warren A. Bugbee, Robert Carey, Arthur H. Bartlett, Allen B. Edwards. MISSING: Ralph H. Deming and Leo H. McKay.

ART, PHILOSOPHY, RELIGION



Night Stop
Richard Kleeman



RICHARD E. KLEEMAN, M.F.A.
Assoc. Professor of Art



RICHARD C. DEVOR, Ph.D.
Assoc. Chaplain
Ass't Professor of Religion



JAMES F. DAY, Ph.D.
Ass't Professor of
Philosophy and Religion



CARL F. HEESCHEN, A.M.
Professor of Art



RALPH I. HOCKING, M.A.
Instructor in Art



SAMUEL E. LINDLEY, Ph.D.
Assoc. Professor of Philosophy



RICHARD E. HUTCHESON,
Ph.D.
Ass't Professor of Philosophy

ENGLISH

CLASSICS

MUSIC



SAMUEL K. EDWARDS, M.A.
Ass't. Professor of Classics



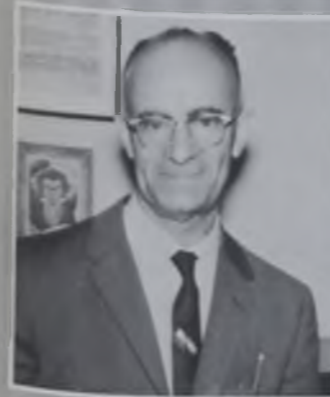
MORTON J. LUVAAS, Mus.D.
Professor of Music



FREDERICK R. SEELY, Ph.D.
Professor of English



ALFRED KERN, M.A.
Assoc. Professor of English



HERBERT G. NEURATH, Ph.D.
Professor of Music



CHRISTOPHER G.
KATOPE, Ph.D.
Assoc. Professor of English



W. S. WRIGHT NORTH, M.M.
Ass't. Professor of Music



RICHARD E. MADTES, Ph.D.
Assoc. Professor of English



ROBERT B LYNN, M.S.
Ass't. Professor of Music



HENRY F. POMMER, Ph.D.
Professor of English



HARRY M. LOGAN, A.B.
Instructor in English



и пример в борьбе за высокую урожайности свеклы показывают к рабочим совхозов Киевской области и Одесского края. Еще в 1957 году мы обратились ко всем земледельцам с призывом развернуть работу за выполнение и перевыполнение плана производства и продажи свеклы. Мы поддерживали Центральный комитет партии. Следуя примеру киевлян, мы в соревнование включили всех свеклосеющих районов области. В этом году колхозы и совхозы добились больших успехов в свекле на больших массивах. Они занимали свыше 5,5 миллионов гектаров. На значительных площадях свекла возделывалась без применения большого труда, по новой тех-



Bemüht sich, seine wesentlichen Punkte zu verstärken. Die Gegebenheiten europäischen Industrieunternehmen günstige Gelegenheit. Engländer und Italiener versuchen sich ein Stück aus dem beachtlichen Stück herauszuschneiden. Man sind dabei, und zwar man schon die europäischen Möglichkeiten in die Sache. Warum sollten wir dann auf die deutsche Industrie steht in Ruf. Das erleichtert die guten Ruf. Das erleichtert die Absichten ins Ziel zu bringen. Die mächtige der Firma Krupp genug erfahren. Er wurde der Audienz. Mag sein, dass er mit seiner betonten Freund-



de Bois; il excellait surtout dans ce genre de sculpture plus que l'Esquimo n'est ce son travail de coquillages. Les plaines ne l'est point. L'Indien n'avait pas la matière première nécessaire pour mener une vie nomade. L'Indien interdisait la possession de ces objets fragiles. Cependant bien des tribus pratiquaient ce troc dont les Indiens, de sorte que, malgré les obstacles naturels, l'Indien ne pouvait pas étouffer son art. Mais comment le définir? Contrairement d'un art réaliste. Et la décadence de l'art. (à quelques exceptions près) comme celui de l'Arizona avec les Hopi et celui du Nouveau Mexique avec les Pueblos qui ont les célèbres poupées Kachinas. Le juge à ce trait: pour voir les Blancs, les Indiens fabriquent



vos prestamos exteriores México continúa jugando un papel importante en el desarrollo del país, y es posible que alcance niveles sin precedentes este año. Durante la segunda mitad de 1963 la impresionante cantidad de 200 millones de dólares en nuevos créditos extranjeros fueron puestos a disposición de México. El mayor fue uno de 150 millones de dólares de Francia, y segundo en cantidad pero quizá más importante como medida del crédito de que goza la nación mexicana, fue la exitosa venta de bonos del gobierno por 40 millones de dólares en los Estados Unidos".



En otros párrafos dice

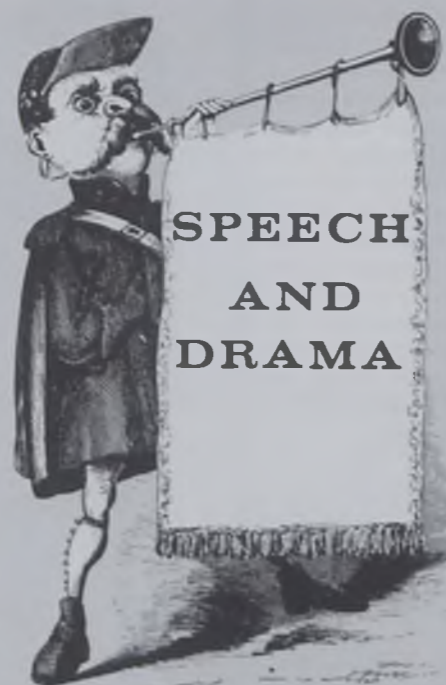
MODERN LANGUAGES

MILDRED J. LUDWIG, A.M.
Assoc. Professor of Modern Languages
FERNANDO CHARRO
Instructor in Modern Languages

DIETER P. LOTZE, Ph.D.
Ass't. Professor of Modern Languages
GENE M. HAMMITT, A.M.
Ass't. Professor of Modern Languages

ROBERT L. CRISPIN, Ph.D.
Professor of Modern Languages
MAXWELL W. JACOBS, M.A.
Instructor in Modern Languages

BLAIR HANSON, Ph.D.
Professor of Modern Languages
REID E. BAKER, M.A.
Instructor in Modern Languages
not pictured:
JOHN K. ROBINSON, M.A.
Ass't. Professor of Modern Languages



**SPEECH
AND
DRAMA**



JOHN W. HULBURT, A.M.
Professor of Speech and
Drama



GRAHAM G. BIRD, B.S.
Assoc. Professor of Speech
and Drama



NELS G. JULEUS, A.M.
Ass't. Professor of Speech
and Drama



WILLIAM F. WALTON, A.M.
Assoc. Professor of Speech
and Drama



WILLIAM D. HANSON, M.A.
Instructor in Speech and
Drama



ROBERT G. WILLIAMS, M.A.
Instructor in Speech and
Drama

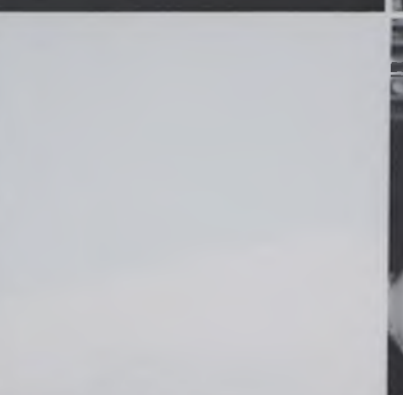


DONALD I. CAIRNS, M.F.A.
Instructor in Speech and
Dramatic Art



BRUCE R. PEARSON, M.A.
Instructor in Speech and
Dramatic Art

**BIOLOGY
GEOLOGY
PHYSICS**



W. EDGAR CURTIS, Ph.D.
Assoc. Professor of Biology

ROBERT E. BUGBEE, Ph.D.
Professor of Biology

BARBARA LOTZE, Ph.D.
Ass't. Professor of Physics

GERALD S. REISNER, Ph.D.
Ass't. Professor of Biology

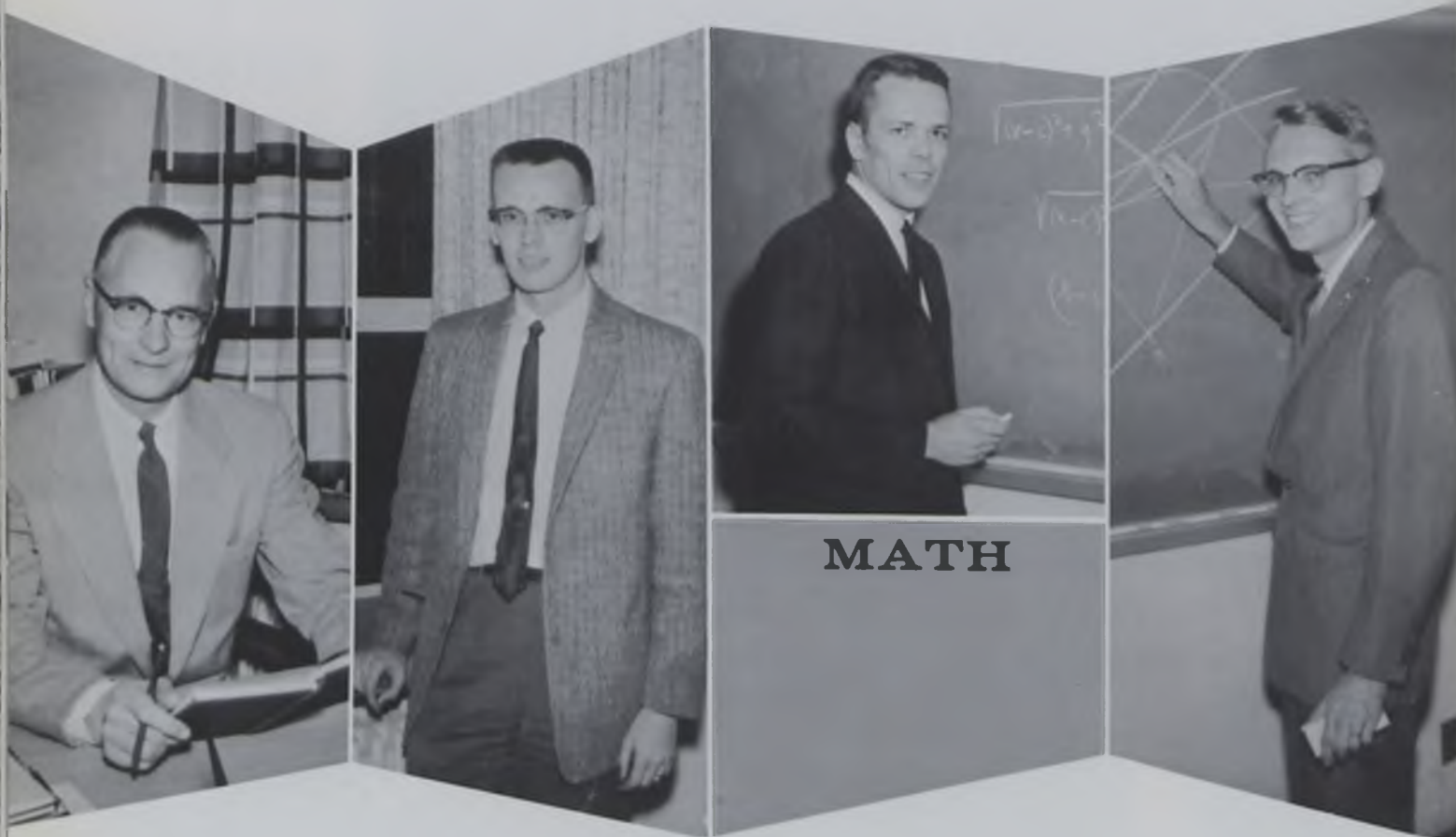
RICHARD L. BROWN, Ph.D.
Professor of Physics

GEORGIANA W. SCOVIL, Ph.D.
Assoc. Professor of Physics

AUGUSTUS COTERA, JR., Ph.D.
Instructor in Geology and
Geography

WILLIAM H. PARSONS, M.S.
Professor of Geology and
Geography

GENE W. HEIEN, A.M.
Instructor in Geology and
Geography



MATH

FREDERICK H. STEEN, Ph.D.
Professor of Mathematics

RICHARD F. McDERMOT, M.S.
Instructor in Mathematics

ROBERT GUY VAN METER, Ph.D.
Assoc. Professor of Mathematics

LARRY C. GRUNWALD, M.S.
Instructor in Mathematics



CHEMISTRY

JOHN E. CAVELTI, Ph.D.
Professor of Chemistry

HERBERT S. RHINESMITH, Ph.D.
Professor of Chemistry

HAROLD M. STATE, Ph.D.
Professor of Chemistry

LEWIS W. PYLE, Ph.D.
Assoc. Professor of Chemistry



**PSYCHOLOGY
EDUCATION
SECRETARIAL STUDIES**



GUY E. BUCKINGHAM, Ph.D.
Professor of Psychology



GLENN W. THOMPSON, Ph.D.
Ass't. Professor of Psychology



HERBERT L. KLIONS, Ph.D.
Ass't. Professor of Psychology



WILLIAM R. SINCOCK, Ph.D.
Professor of Education



REBA GARVEY, Ed.D.
Ass't. Professor of Education



STEPHEN A. KUSHNICK, M.S.
Ass't. Professor of Psychology



EMILY B. HIGGINS, Ed.D.
Assoc. Professor of Education



LUCILLE G. HAGMAN, Ed.D.
Assoc. Professor of Education



JUDITH N. ADAMS, B.S.
Instructor in Secretarial
Studies





ECONOMICS SOCIOLOGY



JOHN B. HENDERSON, Ph.D.
Professor of Economics



HENRY M. MULLER, Ph.D.
Professor of Sociology



RICHARD E. HILBERT, Ph.D.
Ass't Professor of Sociology



JOHN W. HIGGINS, M.A.
Instructor in Economics



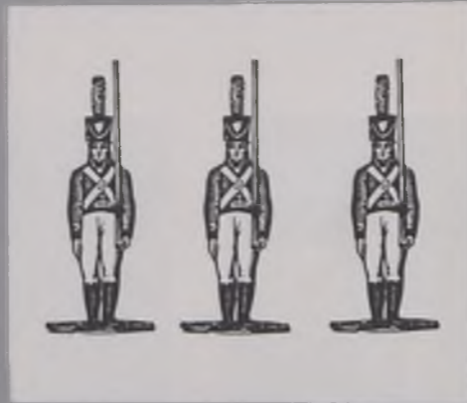
BALWIR SINGH, Ph.D.
Ass't Professor of Economics



JUDITH A. LAWLER, A.B.
Instructor in Sociology



KENNETH G. AINSWORTH, Ph.D.
Ass't Professor of Economics



HISTORY

POLITICAL

SCIENCE



PAUL B. CARES, Ph.D.
Professor of History
JAY LUVAAAS, Ph.D.
Assoc. Professor of History

ALVIN Z. FREEMAN, Ph.D.
Ass't. Professor of History
RUSSELL E. VANCE, Ph.D.
Ass't. Professor of History

PAUL A. KNIGHTS, Ph.D.
Professor of History
JONATHAN E.
HELMREICH, Ph.D.
Ass't. Professor of History

WAYNE R. MERRICK, D.S.S.
Professor of Pol. Science
ALTON D. KIDD, M.Litt.
Assoc. Professor of Pol.
Science

J. LEIPER FREEMAN, Ph.D.
Professor of Pol. Science
MARK READER, M.A.
Instructor in Pol. Science

DEPARTMENT OF AIR SCIENCE



WILLIAM C. HANSON, M.Ed.
Assoc. Professor Phys. Ed.



ROBERT M. GARBARK, M.A. in Ed.
Assoc. Professor of Phys. Ed.

PHYSICAL EDUCATION



H. PAUL WAY, M.Ed.
Professor of Phys. Ed.



LT. COL. JAMES L. PEIGHTEL, B.S.
Professor of Air Science



MAJOR JOSEPH C. McAULIFFE, B.S.
Ass't. Professor of Air Science



CAPT. CHESTER A. BARCHIESI, B.S.
Ass't. Professor of Air Science



CAPT. ALEXANDER GOZUR, B.A.
Ass't. Professor of Air Science



JOHN R. CHUCKRAN, M.Ed.
Ass't. Professor of Phys. Ed.



DONALD R. SCHRIEFER, M.Ed.
Ass't. Professor of Phys. Ed.



CHARLES A. RUSLAVAGE, JR., B.S.
Instructor in Phys. Ed.



LORRAINE McLAUGHLIN, B.S.
Instructor in Phys. Ed.



JOYE D. THOMPSON, B.S.
Instructor in Phys. Ed.



MARJORIE KIRK, M.A.
Assoc. Professor of Phys. Ed.





THE COLLEGE UNION

The purpose and justification of an organization such as the Allegheny College Union may be expressed as an effort to integrate the intellectual, cultural and social aspects of education. We believe that these three areas of experience are mutually dependent and we have attempted to provide opportunities for the student to gain experience in these areas.

The Union belongs to the student. He is responsible for initiating, selecting and planning the programs and services which are offered. We believe that the challenges the student accepts through his involvement in this program are a vital ingredient in his attempt to mature.



Miss
Terry
Taylor
1963
Allegheny
Student
Ambassador
To
Nigeria

The past school year has been one of vast growth for Allegheny's Student Government. Through cooperation with fraternities, an all-college filing system was established; a resolution was unanimously passed, barring from council any group which is forced to practice racial discrimination; and by reshaping our \$50,000 budget, an extra \$1,000 was allocated for an increase in social activities. We also acted to encourage academic excellence through the establishment of a "Citation A" award.



ASG ACTIVITIES—ROW 1: Beverly Jadus, Memory Mays, Sue Kerr, Linda Murphy, Annette Gilliland. ROW 2: Lou Phillips, John Quattrocchi, III, Jerry Sowers, Ron Thomas, Ralph Gillen. ROW 3: Bill Dolde, John Rydquist, Sue Hendricks, Sue Werner, Janice Giliberty, Al Cummings, Jim Woods.



ASG CULTURAL AFFAIRS COMMITTEE—ROW 1: Barbara Kulak. ROW 2: Judy Corcoran, Peggy Flounders, Elli Veglia. ROW 3: Howard Hutton, Lawrence Bier.



ASG ELECTIONS COMMITTEE—ROW 1: Wilson Strong, Chuck Norris. ROW 2: Bille Dolde.



ASG TRAFFIC COMMITTEE—ROW 1: John Cochran, Steve Buescher. ROW 2: Bob Graft, Bob Rockwell, Tom Harper.



ASG ASSEMBLY AND PUBLIC EVENTS COMMITTEE—ROW 1: Lynne Grubb, Kiz Dietrich. ROW 2: Stanley Palumbo, Sue Larsen, Stephen Buescher. ROW 3: Jay Rosenberg, Norm Greene, Allan Sundberg.



ASG



ASG FINANCE COMMITTEE—ROW 1: A. J. Laird, Mary Merkle, Ethelyn Foley. ROW 2: Calvin Leitzel, Sue Wolfram, John Brancato, Mary Hnat, Irving Brown. ROW 3: Dennis Sampson, Wayne Abbott, Judy Alexander, Bill Mapes, Mark Doeffinger. MISSING: Robert Coleman, Philip Stevens, David Mochel.



Hank Drucker—Executive President



Sandy De Marino—Vice-president of Communications



Jim Meadowcraft—Vice-president of Student Affairs



John Brancato—Treasurer



Steve Ross—Vice-president of Educational Affairs.



Susan Werner—Executive Secretary

ASSOCIATED WOMEN STUDENTS

Functioning on the principle that its students are responsible and sincere, Allegheny through the years has given its men and women increasing opportunities in self-government. In keeping with this philosophy the Associated Women Students must assume the responsibility and interest of the women in determining their own living conditions. Thus, to think of AWS in its strictest sense, as that minority carrying out its administration, is to fall far short of its true meaning. All Allegheny women students are participating members of AWS and each carries upon her shoulders the responsibility of her own government. Through the use of AWS each woman can provide for herself opportunities in educational, social, and cultural development, while maintaining a spirit of cooperation in community living and fostering a mutual understanding between the Allegheny Student Government, Faculty-Administration, and the women students.



EXECUTIVE BOARD—ROW 1: Karen Darlington, Lana Hough, JoAnne McCalister. ROW 2: Mary Thoburn, Sharon Engstrom, Jody Blanning.



EDUCATING AND EVALUATING BOARD—ROW 1: Elsa Nelson, Marcia Jackson. ROW 2: A. J. Laird, Jane Angelo, JoAnne McCalister, Bonnie Smith. ROW 3: Diane Lorenz, Joby Corl, Mary G. Hyde, Mary Roof, Mary Thoburn.



RULES REVISION COMMITTEE—ROW 1: Paula Pembroke, Elsa Nelson. ROW 2: K. T. Johnson, Helen Gongwer, Carol Richards. MISSING: Nancy Stover.



SENIOR COURT—ROW 1: Ruth Hoerner, Karen Darlington, Ann Harvey. ROW 2: Judy Corcoran, Marilyn Lenz, Sheila McTighe.



COORDINATING BOARD—ROW 1: Barbara Bunn, Jody Blanning, K. T. Johnson, Pat Calhoun, Mary Thoburn, Karen Jordan. ROW 2: Joanne Alley, Sherry Westerland, Marilyn Moore, Beverly Arrowsmith, Ginny Judd, Ann Gruver.



SUZIE SENATE
Beverly Arrowsmith



SENATE—ROW 1: Judy McCann, Dale Beier, Gail Guenter, Andrea Ammann, Diana Christman, Carol Dahlbom, Fran Mitchell, Tessa Chao. ROW 2: Carole Pozzani, Priscilla Price, Sally Watson, Cami Braden, Tricia Stickney, Sally Orr, Judy Heffer, Geri Bucheit.



CLASS OFFICERS

ROW 1: Don Monzheimer. ROW 2: Jill Guthrie, Dick Weber, Gail Claf-fee.

ROW 1: Mike Feltovich. ROW 2: Jim Weaver, Kathy Kish, Ginger Bredehorn.

ROW 1: Charles Unger. ROW 2: Pam Westerman, Paul Stefanacci, Pam Chokel.

ROW 1: Maury Conner. ROW 2: Bob McClung, Carol Carnahan, Sue Urquhart, Pete Dutkovitch.

THE "LITMAG"



In order to write creatively you must search and explore life until you feel confident in illustrating what you have found. This is work. Writing is a process of learning more about one's self and one's world. However, if you apply some imaginative energy and the persistence of a Missouri mule, you will gain the rewards of expressing yourself in numberless, new and different ways. There will always be those who will have more interest than the others, and they will take the stronger part and produce the greater amount of high-quality work. The individual is excited by every new thought that he can discover and by every old thought to which he can add the touch of a questioning and inventive mind. Everyone, to the extent that he is an individual and understands his own mind, questions, invents and creates something of importance to him and to us all. Through reading what is famous and great we become more aware of our vast literary inheritance, but only through our own writing and thinking can we find out our true selves.

—Sanford Chilcote



Tanalyne Peterson
Cindy Johnson
Beverly Holcombe
Christine Speer
Dottie Craig
Edie Steele
Sandy Chilcote
Elaine Chapman
Roger Moore
Betsy Seward
Gayle Rickert

ROW 1: Andy Shapiro, *editor-in-chief*; Annette Gilliland, *make-up editor*; Ted Givler, *sports editor*; William C. Johnston, *assistant managing editor*; Mary G. Hyde, *copy editor*; Dotty Craig, *feature editor*; John Quattrocchi, III, *managing editor*. ROW 2: Norm Greene, Barbara Salago, Martha Haller, Marge Sears, Linda Seifried, Eloise Lewis, Kathe Tunnell, Connie Egan, Fran White, Cathie Arnold. ROW 3: Richard E. Buhrendorf, Larry Katz, Steve Scott, Jeff Munnell, Betsy Myers, Cheryl Eshbaugh, Susan Vaiano, Janet Jackson. ROW 4: Sally Dietz, Kathy Mack, Jane Bauschard, Margot Michel, Sara Ridgeway, J. D. Ruly, Wayne Abbott. MISSING: Julie DeFrancois, *news editor*.

THE CAMPUS

The *Campus* provides a valuable service to Allegheny College, both as a news gathering service and a sounding board for campus opinion. This year new features have been added to the *Campus*. More photographs, especially in the sports section, have added new life and verve. Little Man On Campus presents a spot of humor which hits home. News of the Week condenses world happenings for busy college students. Foto Fun reveals a side of campus life otherwise overlooked.

Need a college newspaper be dry and apathetic? Art Rubinoff answers this question with a vehement "no" each week in his controversial column—"As Art Sees It."

The professors have been interviewed by the *Campus* interviewers and the student body has profited from their varied opinions and statements. The issues have been larger—six to eight pages in length and the staff has increased as well to give us an overall professional atmosphere.

The *Campus* is venturing forth into more interpretive news coverage. The students' voice is heard in Letters to the Editor. Full coverage of forthcoming events on campus gives a sneak preview and necessary time to plan for events in which the student may be interested.

In the future the *Campus* will work toward the presentation of more varied features, better news coverage and the relation of national and international news to our Allegheny Campus.



Loud knocking at the gates of Paradise.
 St. Peter—"Hello there! What's wanted?"
 Applicant—"I want to get in."
 St. Peter—"Well, who are you, anyhow?"
 Applicant—"A. Shapiro."
 St. Peter—"Of Allegheny College?"
 Applicant—"Yes, sir."
 St. Peter—"You are the editor of the *Campus*?"
 Applicant—"Yes, sir—please sir—I didn't—"
 St. Peter—"Shut up! Go over to that smoke stack and dive down."

—Adapted from *The Kaldron* 1889



Heretofore, Annuals in Allegheny have proven to be anything but successful, so it is not natural that we should enter into this by no means diminutive scheme, without considerable apprehension and forebodings of evil.

Nevertheless, the old spirit of '89, which has stimulated us to so many victories, reinvigorated us, and—behold the effect. Is this conceit? Possibly; however, is it not justifiable? We were determined to make it go through, and gone it has . . .

We feel confident that we have done nothing by halves and have represented our class by a book of which no student need be ashamed, but rather may take pride in. The best of paper, ink, binding, and the highest skill of the printer, although expensive, have contributed to make it what it is, and while we desired to place the price within the reach of the most parsimonious, we do so at our own risk . . .

Of course we expect, and rather invite your criticisms. Let them be such that they will be beneficial and profitable to those that follow us, for whom, we are proud enough to think, we have erected a cornerstone and established a precedent.

It affords us great pleasure then to place this volume within your hands, leaving it to you to judge of its merits.

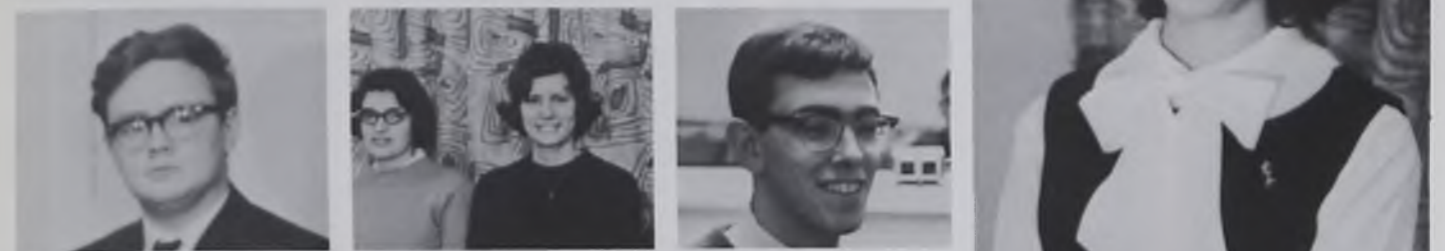
—KALDRON 1889

"A yearbook must be a personal statement; the meaning of the school, the people, and the year, creatively expressed."

—L. Garfinkel



THE KALDRON



Janice Gilliberty
Editor



Dave Kaderly
Business Manager

S. Miller, S. Linn, *features*; P. McCarthy, *social groups*; N. Lyman, *faculty*; H. Hutton, J. Bechtel, *sports*; B. Arrowsmith, *literary*; L. Pyle, *circulation*; D. John, C. Olson, *scheduling*; M. Webb, *seniors*; P. Bragg, P. Liefbroer, *organizations*; E. Hillis, J. Conte, C. Ede, J. Kane, *photography*; H. P. Way, *faculty advisor*; T. Swain, *assistant to the editor*; L. Denny, *advertising*; S. Wolfram, *typing*. ASSISTANTS: K. Quine, S. Kinsloe, F. Buchheit, M. Hnat, J. Bauschard, J. Haude, T. Stickney, P. Nichols, B. Orwig. LITERARY STAFF: N. Greene, B. Douthett, P. Fischer, C. Egan, B. Campbell, A. Holmes, L. McFarland.



Steve Ross, *director*; Carolyn Ginter, Glenn Hickernell, Kathy Kish, Peter Wolfe, Dotty Smith, Carol Vanas, Mary Snyder, Jeff Kane, Beth Conte, Vicki Wolf-ram, Laura Fields, Karen Dar-lington, Dick Tanner, Jeff Bald-win, Sue Vaiano, Lauri Miller, Barb Sindburg, Meg Glueck, Elsa Johnson, George Botcher, Cliff Gaus, Sue Wolfram.



"All that is truly excel-
lent, is as difficult as it is
rare." Spinoza said it and it
has been the inspiration be-
hind the creation and opera-
tion of Radio Allegheny,
WARC.

WARC has attempted to
educate, entertain, and in-
form the campus and com-
munity while providing
worthwhile learning experi-
ences for its members.



WARC

THE ALLEGHENY SINGERS

Each year all men and upperclass women interested in choral music have the opportunity to participate in one of the finest "A cappella" choirs in the nation. Under the direction of Morton J. Luvaas, noted arranger and composer of music, they rehearse four hours a week in preparation for their concerts and public appearances.

Each individual "singer" is contributing his talent to the combined effort of the group in the hope of creating something beautiful and worthwhile. It is the day to day effort and cooperation of all the members which make the dreary note learning bearable and even enjoyable. Whether music is made the first time or the twenty-first, the spirit of unity and joint effort is felt. And, when the words and notes finally are music, the sense of accomplishment is one not to be denied.



SINGERS—ROW 1: Ruth Hoerner, Mary Merkle, Beverly Arrowsmith, Mary Ellen Davies, Kenna Quine, Carol Vanas, Betsy Walker, Marybeth Rood, Judy Byers, Ann Stoops, Jill Guthrie, Leslie Nogi, Ann Harvey, Sandy Kellgren, Alice Rhinesmith, Karen T. Johnson. ROW 2: Gail Claffee, Lynne Grubb, Lynn Campbell, Ellanie Kaufman, Katie Tate, Jean Hull, Sue Kinsloe, Kathie Kish, Sharon Engstrom, Kaye Wynn, Maron Brown, Chris Olson, Toni Crane, Ann Bixler. ROW 3: Caroline Moury, Bill Orellana, Charles Blinde, Richard Dryden, Roger Erickson, David Johe, Thomas Davies, John Malmstrom, Donald H. Rudick, Bob Edwards, Alan Bates, Peggy Flounders, Nancy Watkins. ROW 4: Ralph R. Root, Warren Keck, Rick Harris, Dick Fowler, Phil Jones, David Nery, Jim Meadowcroft, Lynn Hartley, Thomas McGrath, Chet Meyers, Don Reed, Dave McCartney, John Hutcherson.



ROW 1: Janet Fee, Kathleen Foulke, Sylvia Wysocki, Kathe Tunnell, Anne Bauer, Josselyn Beebe, Linda Miller, Rebecca Totten, Barbara Holmes, Sandra Conroe. ROW 2: Ann Holmes, Molly Morck, Marcia Brevoort, Cathy Parsons, Karen Troutman, Karlene Arnold, Sharon Kelts, Susan Weber, Kathy Dye, Helen Young. ROW 3: Kay McAdams, Nancy Wilson, Chestene Onisko, Vicky Wolfram, Cyndee Ball, Toni Swain,

Sandy Dyson, Nancy Charlton, Barbara Bailey. ROW 4: Kim Sjursen, Carol Carnahan, Lydia Way, Allida English, Nancy McCreight, Nancy Weil, Lois Beveridge, Elizabeth Donnan, Wendy Schaerer. ROW 5: Bonnie Campbell, Laura Fields, Elissa Trumbore, Mimi Oberdorf, Carol Dahlbom, Beverly Holcombe, Karol Klapp, Diane Lorenz.

Chapel Choir's aims are high: To come to know a wide variety of choral literature of all ages; to sing it all as near to perfection as human inspiration and endurance will permit; and then to sing it better; finally to present it, as an offering, in Ford Chapel and on Spring Tour.

That these high aims are occasionally hit, is due to the Enthusiasm, Spirit, and occasional Sufferings of the Choir's Members, for which their director is deeply grateful.

CHAPEL CHOIR / SINFONIETTA

In contrast to all other campus organizations, the Sinfonietta is a composite group, taking in not only college students, but also town musicians and qualified players from the high schools. The love of great music, inherent in every member of the Sinfonietta and stimulating each to give his best, is the one element that unites the group in its efforts to provide this area with fine orchestral music. At the same time, our orchestra is important in that it serves as an outlet for instrumentalists, older and younger ones, who desire to play in a group of serious, dedicated amateurs like ours.



First Chair people in Sinfonietta: VIOLIN: Alice Rhinesmith, concertmistress. VIOLA: Mark Schumacher, CELLO: Mary Thoburn. FLUTE: Diane Divis. CLARINET: Howard Van Allsburg. BASSOON: Norman

Seifreit. HORN: Sylvia Wysocki. TRUMPET: Stanley Palumbo. TROMBONE: Randolph Pock. TYMPANI AND PERCUSSION: Mr. Hilbert.

CWENS JUNIOR ADVISORS STUDENT COUNSELORS



CWENS—ROW 1: Julie Rothe, Julie DeFrancois, Mimi Oberdorf, Alice Rhinesmith, Ginny Judd, Patricia Leszek, Linda Seifried, Betsy Myers, Nancy Neuendorffer. ROW 2: Elsa Johnson, Carol Dahlbom, Mary Hyde, Joy Burt, Ann Grover, Marcia Jackson. MISSING: Nancy Troglione.

JUNIOR ADVISORS—ROW 1: Candy Campbell, Dottie Craig, Carol Woodside, Judy McCann, Carol Dain. ROW 2: Valarie Meliotes, Dale Beier, Kathy Kish, Carolyn Mayo, Ginger Bredehorn, Judy McCutcheon. ROW 3: Linda Northrup, Ruth Summers, Sherry Linn, Eth Foley, Barb Rautner, Peggy Peters, A. J. Laird.

FEMALE STUDENT COUNSELORS—ROW 1: Sharon Detrick, JoAnn McCalister, Terry Taylor, Lana Shield. ROW 2: Maron Brown, Memory Mays.

MALE STUDENT COUNSELORS—ROW 1: Dick Weber, Phil Jones, Mike Feltovich, Alan Weinstein, Sandy Levy, Dick Fowler, Jack Gordon, Jim Meadowcroft, Wilson Strong, Jack Tjaden, Bob Vukovich. ROW 2: George Commons, Carl Stenberg, Dave Flieger, Dave Ludwig, Chet Meyers, Dave Wion, Bob Lerch, Steve Ross, Bill Beggs, Dennis Bleakley, Don Monnheim.



Even before arrival on campus, freshmen women have become acquainted with two upperclass women; their Cwen and their Junior Advisor. Cwens, a national honorary sorority for sophomore women, and J.A.'s, both chosen by their peers and a selection board, provide a successful big sister program throughout the year, aiding freshmen in social and academic areas. More direct counseling and orientation is rendered by the student counselors, selected through interviews with the Dean of Women, resident advisors, and student counselors. These upperclass students live with the freshmen, assisting them in every way possible.

ARNOLD AIR



Comprised of the advanced cadets, the Arnold Air Society is an additional part of Allegheny's R.O.T.C. program. Through discussions with leading Air Force officers, lectures and movies pertaining to the national defense, and by flights to various bases around the nation both on week-ends and over the holidays, the members of this honorary organization attain a broader view and more understanding of military life. Concerning the social aspect, the Arnold Air Society co-sponsors the annual Military Ball along with the Angel Flight.



ROW 1: John Brancato, John Peterson, John Cochran, Peter Holt, David Johe, Stan Czech, Henry McCauley, Richard Shaffer, George Commons, Richard Leadley, Klaus Klause, Ken Stone, William Brown. ROW 2: Emil Kloske, Dan Straub, Robert L. Von Roch, David Ludwick, David Wion, Carl Stenberg, Carl Anderson, Grant Preble, Roger Rice, Tom Harper, Jack Kraiger, Harry Lipp, Thomas A. Romig, William Burkhart, Randall Smith, Marty Yerg. ROW 3: John Hutcherson, J. P. Smolinski, Al Cummings, John Lelah, Roy Gilliland, Howard Nestlerode, Robert Vukovich, Robert Petersen, Wayne Abbott, John Draker, John Morse, Jack McAdams, Jack Tjaden, Dave Morrison.



ROW 1: Judy Topetcher, Cheryl Sebald, Judy Bechtel, Karen Brown, Norma Blouch, Mindy Wallace. ROW 2: Karen Kuchta, Judy McCann, Lynette Erzen. BARROW 3: Barbara Ishler, Fran Buchheit, Priscilla Price, Barbara Bunn, Pat Calhoun, Anne Wait, Margaret Ellis, Betsy Miller, Penny Nichols, Pat McCarthy, Sue Hendricks, Diane Wester, Lynda Herrick, Karen Jordan, Sue Bartow, Betsy Burr.



ANGEL FLIGHT

Angel Flight is a service organization on campus made up of upperclass women who have an interest in the Air Force and in promotion of the Air Force R.O.T.C. program. By attending drills and joining Arnold Air Society for special programs, Angels learn more about military life. Acting as official hostesses for Arnold Air Society, they assist in the presentation of the Military Ball. Learning through service enriches an Angel's college experience, and prepares her for future contribution.



STUDENT AFFAIRS COMMITTEE—ROW 1: Barbara Micks, Row 2: Dave Semian, Edie Kovel, Dave Graham, Beth Urbaitis, Randy Pock. ROW 3: Don Monnheimer, Don Zuris, Valarie Meliotes, George Jacson, Mike Feltovich, Richard Momeyer. MISSING: Pam Bragg.



RELIGIOUS ACTIVITIES COMMITTEE—Dr. Devor, Chet Meyers, Jean Adamson, Bob Goellner, Howard Sterling. MISSING: Rick Momeyer, Sherry Westerland, Dr. Day, L. Freeman, R. Garvey, Mr. Helmreich.



PHILO-FRANKLIN—ROW 1: John Morse, June Fair, Warren Kessler. ROW 2: Steve Scott, Peggy Kessler, David Frost, Ronald Davis, Ethelyn Foley, Chuck Norris.

THOBURN CLUB

ROW 1: Mary Merkle, John Walker, Craig Bartholomew, Allan Jones, Bill Riggs, Ann Bixler, Barb Rautner, Bob Jolley.



ROW 1: Ron Thomas, Suzanne Paisley, Mary Merkle, Barbara Orwig, Barbara Kulak, Katy Tate, Jane Mahaffey, Paula Scizak, Gary Hickernell. ROW 2: Alan Bates, Dave Semian, Stephen Marshall, Bill Bradnan, Bill Owston.

CHEMII

PSYCHOLOGY CLUB

ROW 1: Dr. Thompson, Mary Hnat, Trink DeLancey, Edie Kovel, president; Lynnell McLaren, Dr. H. L. Klions. ROW 2: Peter Holt, Paul Taille, Andy Schmidt, Jim King, Dick Fowler, Herb Howe, John Burdick, Ted Givler, Don Protheroe.



ROW 1: Jerry Weidner, Barb Demyan, Sylvia Wysocki, Donnie Debec, Peggy Hawkins, Fr. William A. Cici, Mary Hnat, Carol Schlehner, Edie Kovel, Cathie Arnold. ROW 2: Janet Kokal, Andrea Ammann, Joseph Bell. MISSING: Jane Angelo, Carol Barbero.

NEWMAN CLUB



LANGUAGE CLUBS



FRENCH CLUB—ROW 1: Chris Shattuck, Eloise Lewis, Wendy Jane Schaerer, Marsha Webb, Janet Kokal, Maribea Ruppel, Jane Walter. ROW 2: Judy Sieck, Suzy Shollenberger, Dawn Goodridge, Christine Moore, Carole Pozzani, Carol Walls. MISSING: Marjorie Sears.



GERMAN CLUB—ROW 1: Judy Conie, Mary Lee Glenn, Cheryl Miller, June Fair, Cathie Arnold, Gary Taber. ROW 2: Charles Blide, Bob Jolley, Annegret Monk, Jerry Smollinski, Dieter Lotze.

Pictures courtesy of Mr. Hammitt and Miss Ludwig.



YOUNG REPUBLICANS

Allegheny's Young Republican Club tries to develop student political consciousness. Prominent local, state and national Republican speakers are sponsored monthly to discuss and debate political trends, controversies, and opportunities. More importantly, this club provides a training ground for student energies and interests through work with the senior Republican organization.



YOUNG DEMOCRATS

New on campus, the Young Democrats Club has provided for its members a forum upon which to voice varying political opinions. Throughout the year such events as the Civil Rights debate and the visit of Senator Wayne Morse sparked campus interest and have furthered the club's goal of political awareness.



ROW 1: David Frost, Elli Veglia, Fran White, *secretary*; William C. Johnston, *treasurer*; Barbara Micks, *president*; David Russell, Diane Shafer, *program chairman*, P. David Park. ROW 2: Steve Scott, Pam White, Carolyn Ede, Donna Bowman, Jack Blair, Becky Friedt, Barbara Reed, Peggy McQuade, Don Monzheimer. ROW 3: Eleanore Bergeson, Sherry Linn, Jo Noggle, Lynnell McLaren, Susan Vaiano, Janet Jackson.



ROW 1: Jane Walter, Marysue Mason, Marge Ellis. ROW 2: Jon VanDoren, Sandy DeMarino, Steve Yelen, *president*; Mary G. Hyde, *membership chairman*; David Wion, *vice president*. ROW 3: Gail Guenter, Nancy Hallas, Roger Sokol, Sue Hendricks, Joel Verbit, Sally Dietz, Bruce Graham.



ORCHESIS

Orchesis, as a modern dance organization, attempts to give interested students an opportunity to develop coordination, rhythm, and self-expression. These goals are accomplished under the expert guidance of Miss Joye Thompson and through both individual and group endeavors. Tuesday evenings for the members are spent exercising, creating, and learning. To keep ideas from becoming stagnant, the group attends modern dance shows at various schools. Each spring this organization presents a unique and entertaining production for the student body in which all the work and training of the past year are put to good use.



ROW 1: Judy Bechtel, Bitty Thoburn, Trish Piper, Anne Wait, Joss Bebec, Carolyn Anderson, Reitha Heigle. ROW 2: Lynnell McLaren, Helen Gongwer, Kenna Quine, Marty Clugston, Wendy Clark, Madge Ewing. ROW 3: Paula James, Mary Ellen Davies, Ricki Schwartz, Nan Lyman, Dotty Smith, Vicki Luine, Diane Shafer. ROW 4: Trudi Miller, Joanne Johnson, Laura Miller, Cydnee Sampson, Connie McCleery. ROW 5: Barbara Sindberg, Bobbi Beiler, Susi Kinsloe. MISSING: Chris Olson, Sue Samuels, Bob Warbin.



Dee Johnson, Cydnee Sampson, Lynne Grubb, Sharon Romig, Nancy Kammerdeiner.

TWIRLERS

Allegheny's twirlers seized the opportunity offered by the reorganization of the college band to become a more effective group. Previously used halftime block formations were out for the 1963 football season and musical skits in which both twirlers and musicians moved into formations were introduced.

Lynne Grubb led the girls in a campaign for school spirit by participation in Pep Rallies and special dance routines.

Plans for next year include the enlargement of the group and the use of more band-majorette formations and novelty numbers.

**KAPPA DELTA EPSILON
PI GAMMA MU
PI DELTA EPSILON**



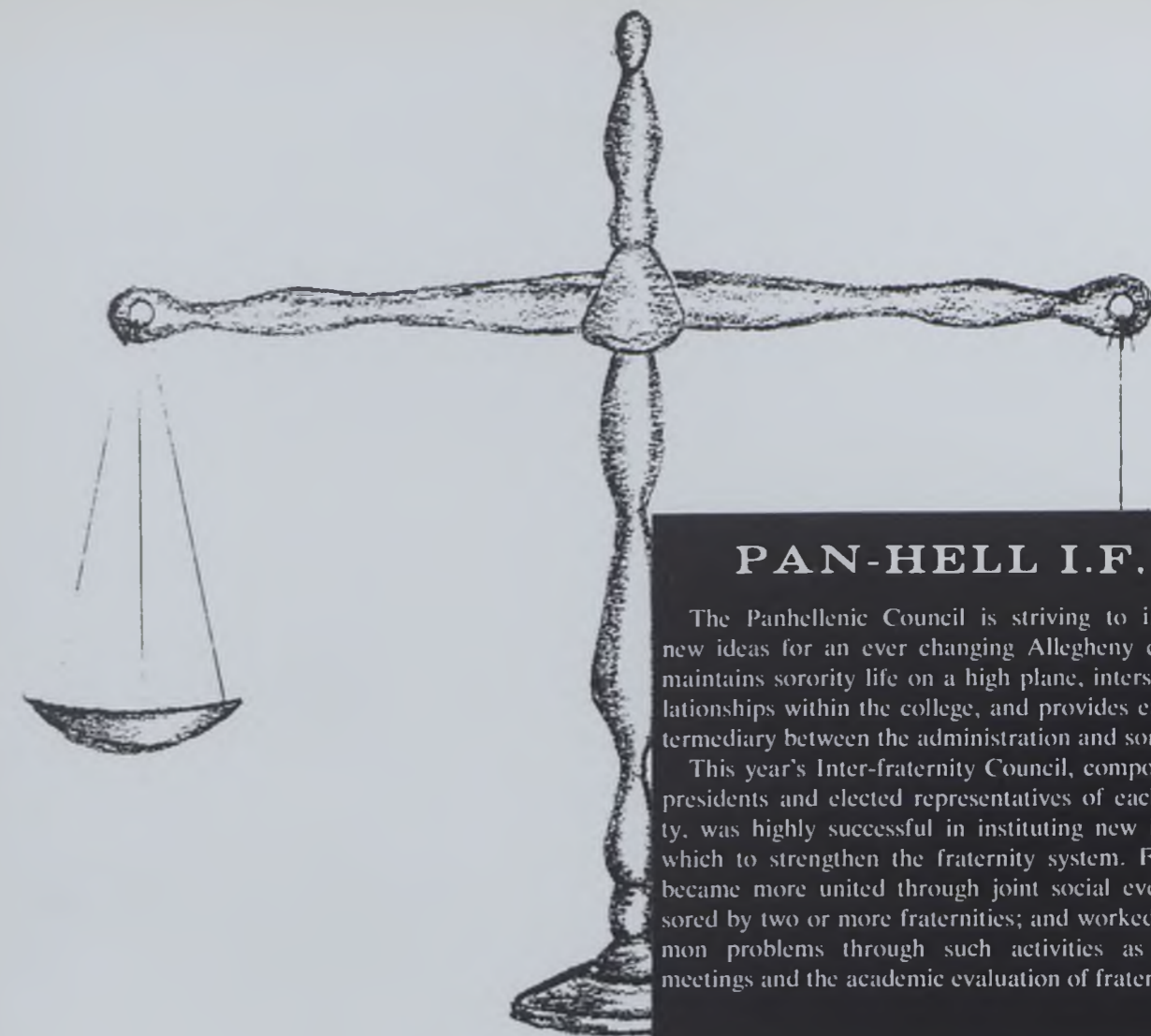
ROW 1: Leslie Nogi, Jane Lindsay, Memory Mays, Ruth Hoerner, Janice Giliberty. ROW 2: Joan Walling, Mary Ann Janik, MarySue Mason, Ann Harvey, Judy Corcoran, Jill Guthrie, Nancy McElroy, Nancy Mortimer, Pat Steele, Geri Buchheit. ROW 3: Kathy Quinlan, Bonnie Smith, Carolyn Ede, Mary Beth Rood, Lynn Pyle, Marlene Brown, Jody Blanning, JoAnn Johnson, Marilyn Frost, Jean Price, Bobbie Huch, Sara Allstetter.



ROW 1: Elli Veglia, Karen Lane, Sheila Stanley, June Fair, Judy Corcoran. ROW 2: Ruth Summers, Mary Ann Janik, Ethelyn Foley, Jane Raber, Jody Blanning.



ROW 1: Kathie Kish, Ruth Summers, Dotty Craig, Marilyn Pettit. ROW 2: Edie Kovel, Jeff Kane, Vi Biekarck, William McAfee, Beth Urbaitis, Karen Alice Darlington. ROW 3: Donna Lee John, Lynn Pyle, Al Weinstein, Norm Greene, Steve Ross, William C. Johnston, David Kaderly, Carol Fetcko.



PAN-HELL I.F.C.

The Panhellenic Council is striving to incorporate new ideas for an ever changing Allegheny campus. It maintains sorority life on a high plane, intersorority relationships within the college, and provides effective intermediary between the administration and sororities.

This year's Inter-fraternity Council, composed of the presidents and elected representatives of each fraternity, was highly successful in instituting new ideas with which to strengthen the fraternity system. Fraternities became more united through joint social events sponsored by two or more fraternities; and worked out common problems through such activities as stewards' meetings and the academic evaluation of fraternities.



ROW 1: Steve Simonton, Lou Moskowitz, Bill Armitage, president; Dave Wion, secretary-treasurer; George Jackson, vice president; Herb Howe. ROW 2: Robert Goellner, Terry Thornton, J. Robert Johnston, John Crill, John Morison, Tim Gill.



ROW 1: Carol Woodside, Judy Corcoran, Peggy Peters. ROW 2: Dale Beier, Ellen Taylor, Barb Sindburg, Val Meliotes, Carolee Bump, Pam Chokel, Sherry Westerland, Gail Claffee. ROW 3: Joy Burt, Tricia Stickney, Fran Buchheit, Twyla Holmstrom.





ΑΧΩ



To see beauty even in the common things of life, to shed the light of love and friendship round me; to keep my life in tune with the world that I shall make no discords in the harmony of life . . . to see and appreciate all that is noble in another, be her badge what it may; and to let my lyre send forth the chords of love, unselfishness, sincerity. This is to be my symphony.

—Celia McClure



ROW 1: Susi Kinsloe, Janice Giliberty, Judy Corcoran, Carol Fetcko, Jean Adamson, Sue Hendricks, Sandy De Marino, Mary Ann Janik. ROW 2: Marge Ellis, Lynne Herrick, Jeanne Goodman, Donna Lee John, Judy Biscan, B. Rand, Mimi Oberdorf, Lynn Campbell. ROW 3: Ellanie Kaufman, Nan Lyman, Mary G. Hyde, Sue Bartow, Bonnie Campbell, Marty Clugston, Barbara Holmes, Sue Falor.

ROW 1: Pat Steele, Marysue Mason, Elli Veglia, Lynne Grubb, Diane Shorr, Joan Walling, Nancy Mortimer, Carole Pozzani. ROW 2: Ruth Summers, Peggy McNamara, Connie McCleery, Marilyn Pyle, Barb Montgomery, Suzy Spence, Carol Woodside, Cherie Sebald, Frances White, Becky Steffens. ROW 3: Kenna Quine, Dotty Smith, Toni Swain, Pam Bragg, Edith Steele, Dee Wester, Judy Topetcher, Tricia Stickney, Gretchen Vanneman.



Α Γ Δ



"To cultivate friendships with many whom I meet . . . and to study the perfecting of those friendships." Alpha Gam is—group participation that led to the winning of the Panhell can drive, spontaneous get-togethers in their newly redecorated rooms, traditional fulfilled Bousson outings, sentimental memories of the spring dinner-dance, and altruistic responsibility such as the annual contributions to the Easter Seal Fund.



ROW 1: Mary Thoburn, Peggy Flounders, Sandra Kellgren, Ann Harvey, Marlene Brown, Leslie Nogi, Marilyn Petti, Claudia Gilkey. ROW 2: Jean Kimen, Katherine Kish, Eleonora Botti, Mary Hnat, A. J. Laird, Paula James, Dotty Craig, Eth Foley. ROW 3: Carol Schlehner, Linda Northrup, Helen Gongwer, Kathy Dye, Cathie Arnold, Marcia Brevoort, Sue Valano, Joan Hardy. MISSING: Gretchen Sigler, Diane Gottlieb, Kathy Alcorn.

ROW 1: Marilyn Frost, Diana McKeon, Nancy Watkins, Marilyn Lenz, Joby Corl, Sue Wolfram, Onolee Ferguson, Bobbie Huch. ROW 2: Judy McCutcheon, Peggy Peters, Charlene Snow, Barb Rautner, Ellen Taylor, Barb Barraclough, Karen Fischer, Mary Lou Carlson, Marsha Webb. ROW 3: Vicki Wolfram, Pam Chokel, Barb Duffus, Ann Gruver, Nancy Neuendorffer, Connie Matz, Betty Spiegel, Mary Roof, Lana Shield.



Α Ξ Δ



Nationally founded on April 17, 1893, Alpha Xi Delta now has ninety-eight chapters and forty thousand members. This was the thirty-eighth year for the Alpha Rho Chapter on Allegheny's campus. Participating in several altruistic projects, the Alpha Xi's contributed their services to North Warren Hospital, took part in the annual Charity Can Drive, and sponsored a Greek orphan under the Foster Parent's Plan.



ROW 1: Cindy Lakatos, Ginger Jones, Ann Bixler, Dawn Goodridge, Paula Scizak, Gwen Terhune, Bette Mitchell. ROW 2: Carolee Bump, Sue Squires, Linda Hotchkiss, Mary Merkle, Barbara Orwig, Katy Tate, Twyla Holmstrom. ROW 3: Kathe Tunnell, Dot Brindley, Martha Beebe, Connie Bianchi, Beverly Judus, Marcia Scott, Nancy Branstrom, Mary Conant.



ROW 1: Krispen Moore, Sheila Stanley, Suzanne Paisley, Sara Altstetter, Jean Price, Judy Galbreath, Susan Wick. ROW 2: Bonlee Douthett, Pat Dornhoffer, Karen Brown, Diane Lorenz, Mimi Gehron, Cami Braden, Ellen Brown. ROW 3: Jane Mahaffey, Lois Beveridge, Kathy Mack, Mary McKinley, Suzy Shollenberger, Sue Ogden, Christine Woodwell.



Κ Α Θ



The warmth of friendship easily made and everlasting, the joy of giving when it's needed, the satisfaction gained from work with others, the thrill of competition with its sweet rewards, the power and strength of leadership, the keen and heartfelt laughter of those who like to play—This is my Fraternity . . .

Mary Jane De Haas



ROW 1: Linda Allison, Jane Raber, Barbara McMurray, Robin Thurman, Kay Keedy, Winnie Lyons, Sally Way, Jane Lindsay. ROW 2: Barbara Micks, Judy Alexander, Kaye Wynn, Dale Beier, Ann Stoops, Barbara Moore, Linda Murphy, Anne Hinnebusch. ROW 3: Andrea Strang, Betty DeVore, Carolyn Anderson, Jeanne Smith, Ann Forestell, Helen Broxton, Jane Below. MISSING: Jill Anderson, Joanne McCalister, Pat McCarthy.



ROW 1: Jill Guthrie, Judy Auld, Marybeth Rood, Ruth Hoerner, Gail Claffee, Violet Bickarck, Becky Way, Barb Sindberg. ROW 2: Heidi Mehring, Marty Everhart, Linda Cooper, Emmy Lou Weaver, Joan Jackson, Dian Christman, Joy Burt, Norma Blouch, Anne DeLaCroix. ROW 3: Carolyn Ede, Marg Yeager, B. J. Wood, Sue Slater, Bev Arrowsmith, Julie DeFrancois, Marilyn Dale, Joanne Shevchik, Judy Byers.



K K Γ



. . . a relationship of mirth, sympathy, curiosity, and sincerity with girls of different minds but like hearts; a chance to exchange ideas with sisters I respect; the stimulus to practice a positive philosophy of life . . .



ROW 1: Anne Wait, Diane Shafer, Sue Werner, Sarah Nichols, Liz Parenti, Bonnie Smith, Sally Watson. ROW 2: Betsy Miller, Judy McCann, Retha Heigele, K. T. Johnson, Memory Mays, Lynn Pyle, Valarie Meliotes, Sharon Engstrom, Dee Johnson. ROW 3: Susie Blind, Toni Crane, Carol Parks, Mary Ellen Davies, Judy Selvage, Ginny Judd, Carol Dahlbom, Carolyn Ginter, Penny Nye.

ROW 1: Barb Bunn, Lana Hough, Linda Murray, Nancy Griffin, Geri Buchheit, Maron Brown, Jan Greenlee. ROW 2: Mary Ann Chance, Jody Blanning, Pat Clair, Pat Calhoun, Jennifer Addy, Candy Campbell, Carole Barnes, Elsa Johnson. ROW 3: Karen Jordan, Barb Ishler, Pam Westerman, Chris Olson, Denny Arter, Fran Buchheit, Julie Haude, Alice Rhinesmith.



A X P



In keeping with its traditions the Fraternity of Alpha Chi Rho has continued to stress intellectual development, campus leadership, social activity, and service to the College as the means to the development of the well-rounded and informed individual so essential to our modern society.



ROW 1: Jay Rosenberg, Tom Bierly, Earl Reynolds, Tom Jamison, Ron Comfort, Frederic Howk, Herb Howe, Al Weinstein, Bill Armitage, Frank Barnhart, Jack Gordon, Emil Kloske. ROW 2: Jerry Feist, John Walker, John Farrar, Bill Brown, Roger Sims, James Jackman, Bill Orellana, Nick Aretz, Jack Burt, Ken Miller, Don Speicher. ROW 3: Jim Mahoney, Bill Morton, Bob Sorcek, Jack Gornall, Dave Wood, Bob Terrill, Jack Bingham, Allan Katz, Jeff Russell, Bob Bailey, Bob Allen, Skip Potter.

ROW 1: Bob Goellner, John Hutcherson, Bob Jolley, Jeff Bullard, Al Sunberg, Bob Warbin, Ed Kloske, Dave Williams, Bob Sikes, Bill Mapes, Art Brown. ROW 2: Jim Kokoros, Jerry Stern, Ron Hrinda, Ron Davis, Chuck Areson, George Jones, Art Nagel, Steve Seidman, Stan Palumbo, Bill Frew, John Kelso, Jim Manor. ROW 3: George Robeson, Geoff Barnard, Howie Sterling, Dave Spencer, Don Cowley, Dave Nery, Jim Reynolds, Pete Durst, Robert Graft, Dave Wuertzer, Craig Harris, Paul Stefanacci.



Delta Tau Delta, one of the first fraternities on Allegheny's campus, is proud to have moved in step with the college community in these years of change and growth. Our goals parallel those of the college in attempting to achieve increased maturity and to develop the entire personality: scholastically, culturally, athletically and socially.



ROW 1: Bruce Johnson, John Buyck, Bob Parker, Dave Fulton, Denny Bleakley, Carl Todaro, Robert Stauffer, Russell E. Armes, Jr., David Slater. ROW 2: Thomas Parker, David Brush, Robert Stockdale, James Deemer, Larry Stevens, Walt Conte, Paul Lambert, Jr., Jack Karol, Charles Williams. ROW 3: Dennis Neely, John Yoder, Robert Kendall, Norman Seifreit, James Treter, L. David Benson, Christian Müller, Hib Shelton, Steve Scott. MISSING: Joe Matson, John Bickerton.

ROW 1: George Jackson, Donald Monnheimer, Tom Harper, Jack Blair, Roger Rice, Robert Harden, Louis Moskowitz, Dana Burnett, Doug DeWaters. ROW 2: Brian Larson, James Hall, Gerald Jeppe, John Miller, Garry Howell, Irv Brown, Jeff Meredith, Kurt Porschen, David Wolf, Tim Bouton. ROW 3: Roy Gilliland, Edward Thornblade, Don Hoffman, George Dull, Robert Salmon, Bill Sekely, Rich Brandt, Don Tracey, Tom Freeman, Steve Paul, Wayne Posschl.



Φ Γ Δ



A fraternity may be many things to its members—a place to eat, a place to sleep, a place to entertain, a place to be entertained. To a Phi Gam a fraternity is much more than this. It exists to serve the institution that fosters it and for the development of its members. It is, therefore, more than the Poverty Ball and Fiji Island Party that the brothers take away from Allegheny. The rich experiences of true brotherhood are the lasting things.



ROW 1: Reuben A. Clay, Harry Hinkle, Kerwood Grippe, Sam Bass, Joe Fabitz, Jimmy Joe, Wally Killsy, Buster Crabs, B. F. Goodrich, Herbie Hind. ROW 2: Gordon Smith, Stuart Williams, Harry Lipp, J. Edward Hoover, Jack Kraiger, Fred Kerplatz, Chuck Wagon, Frank N. Stein, Rosie Brown, Cassius Clay. ROW 3: Ritzi Lee, Ima Fink, Lee Oswald, Bill Janowsky, Bill Zerman, Dick Okrasinski, Ed Ruby, Bill Hedlivey, Hank Sewinsky, Greg Rocha.



ROW 1: Jack Ruby, Jeff Baldwin, Gabby Hays, Dave Wion, Boris Badenoff, Peter Goesinyak, Felix Mantilla, Henry Ford, Arnold Palmer, John Doe. ROW 2: Gorson Trump, Jim New, Dick Watkins, Jack Lewis, Joe Byers, Paul Thompson, Willie Lovelass II, Tom Tucker, Jake Smith, Cowboy Segee, Jack Lewis II. ROW 3: Robert Anderson, Count Von Klause, Robert Simica, Cary Grant, Rock Hudson, Whata Louse, Stumpy Zacks, Ritzi Lee, Richard Jessup, Dick Haerst, C. K. Yang.



Φ Δ Θ



1963-1964 has been a very successful year for the brothers of Phi Delta Theta. In addition to our regular social program we began this year to sponsor all-college open houses. We also sponsored a tea for freshmen women and reactivated our program of inviting faculty members to dinner.

First term rush came to a very successful conclusion at the beginning of the second term with the pledging of twenty-four men.



ROW 1: Jon Swanson, Randy Pock, Tony Ardelia, Jim McIntire, Robert Campbell, Steve Ross, David Ludwig, Doug McIntyre, Skip Snyder, Mike Feltovich, Phil Jones, Jack Saxer, Wilson Strong. ROW 2: Wayne Wolfram, Criss Tarr, Criag Toedtman, Chuck Ungar, Lou Schultz, Don Fontana, Dave Finn, John Rydquist, Pete Baggerman, Jim Woods, Dennis Andrews, Tom Baxter, Don Truesdell, Robert Kunz, John Rector. ROW 3: Doug Ellis, Jim White, Bob Greer, Bill Cowles, Bob Schwartz, Bob Arms, J. R., Jim Weaver, Rick Harris, Gordon Starr, Jim Irwin, David Dalzell.



ROW 1: Robert Edwards, Richard Webber, James Balent, Dale Colby, Brooke Thompson, Frank DiBella, Lou Garcia, W. A. Bishop, Skip Shaffer, John Crill, John Quattrocchi III, S. Jeffress Williams. ROW 2: Tom Neelen, Jim Meadowcroft, Dick Fowler, Tom Leet, Barry Sullivan, Dave Olson, Alan Lee, Greg Bentz, Jim McClung, Rick Arentzen, Tom Lederer, Thom Copper, Rick Chamberlin. ROW 3: Jim Zeeb, Randy Smith, Bob Barndollar, Dan Straub, Jeff Steinbrink, Craig Decker, Tom Miller, Kees Kolff, Pete McCormick, Dutch Kolff, Scott Fergus.



Φ Κ Ψ



The Phi Psi's, better known as the "Green machine," have been quite active in community and social events. This is typified by the IFC Homecoming Howl, the Freshman tea, the Harvest dance, and Fathers Weekend held this year.

The Phi Psi's, have also won the IFC intramural trophy for the fifth consecutive year and have become a dependable leader on campus. The year's activities were suitably concluded with the pledge dance, the Spring Formal, and Mothers Weekend.



ROW 1: Tony Huff, Gary Hooghkirk, John Barbera, Larry Katz, J. D. Ruby, Don Mercaldi, Terry Bergstedt, David Rowe, Wayne Abbott, Ken Robertson. ROW 2: Frank Pugliese, Jeffrey Holder, Joe Jenkins, Jerome Smolinski, Harry Elkin, Bob Coleman, Sam McCain, John Redder, John George. ROW 3: Lon Foster, John Willett, Fred Jones, Ron Witzke, Danny West, Bill Smucker, John Cox, Gene Thompson, Ken Martin.



ROW 1: John Morison, Robert Hoehn, Tim Gill, Howard Hutton, Ted Givler, Toby Wilson, Hank Newton, Jim Marquis, Amby Bauer, David McCartney. ROW 2: Bill Dolde, B. H. Fisher Jr., Dave Rothberg, Larry Hobbs, Bob Shapiro, Bob Ferguson, Mike Wilcox, Jay Sampson, John C. Cline, Andy Shapiro. ROW 3: Phil Kosch, Thomas Eichbaum, Richard Blandford, James Mitchell, Ray Wisniewski, Tom Severn, Joseph Bell, Ed Whirty, Tom Kolker.



Sigma Alpha Epsilon, the nation's largest fraternity, founded in 1856 at the University of Alabama, pursues a policy of developing its members in a wide but related number of aspects: intellectually, culturally and socially. The first fraternity to sponsor a yearly leadership school, it is SAE's purpose to develop individuals who will make responsible campus and civic leaders.

Pennsylvania Omega Chapter is justly proud of its record and contribution to Allegheny College, to its national fraternity, and to its individual members.



ΣΑΕ



ROW 1: Don Schumacher, Jerry Sowers, William Saine, Arthur Rubinoff, Paul Fellows, Robert Johnston, David Semian, John Cochran, David Johe, Robert Cain, Sean Mathis. ROW 2: Peter Connell, Sheppard Mollick, Bill Beggs, Ron Thomas, Roy Mathers, John Peterson, Pete Holt, Fred Bauschard, Robert Manbeck. ROW 3: John Bonnett, Peter Gustafson, Ronald Batcheller, Jim Austin, Pete Clendenin, Gil Hembreen, Allen Adolphe, Tom Liggett, Eric Zimmerman, Bob Golan.



ROW 1: Steve Miller, Buck Smith, Dick Alfred, Dave Query, Chet Scelford, Jack McAdams, Allan Cummings. ROW 2: Richard Tanner, Barry Bradford, Ward Lyndall, Robert Anderson, John McKenna, Ray Battey. ROW 3: Don Andrews, Jack Phenix, Doug Sootin, Rog Erickson, Dave Mochel, Roger Wendel. MISSING: William Dean, David McNeely, Merv Stover, Eric Loeb, Roy Hoffman, Ed Nellis, Ray Mahaffey, William Watterson, Terry Thonton, Tim Simmons.



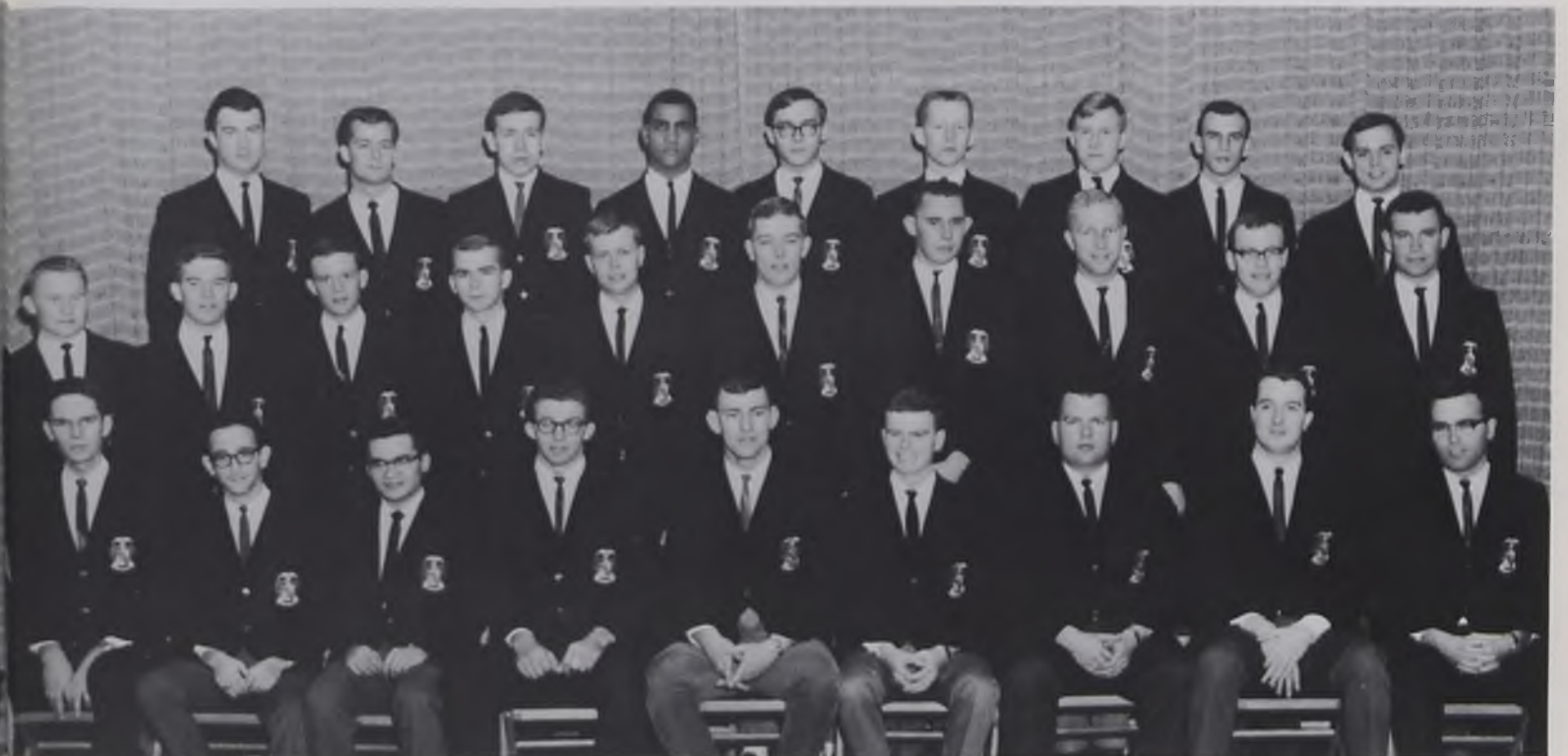
Θ Χ



Essentially Theta Chi is two things: a place to live and a place to expand. It offers release from the pressures of studies—the midnight bull sessions, the Early Show on TV, the traditional Sunday night get-a-date gathering around the phone. Theta Chi encourages scholarship as well as athletic and social functions, to produce socially poised, well-rounded men, within the most important aspect of all, Brotherhood.



ROW 1: Marty Mancuso, Jim Harrison, Bob Smith, Jim Hriso, John Anderson, Paul Loucks, Dick Kerecman, David Relley. ROW 2: Bill Alvin, Walter Mulchin, Richard Ream, David Kaderly, Ronald D'Ascenzo, Dennis McFadden, Bob Lerch. ROW 3: Thomas Kellogg, David Flieger, Kirk Borland, Ray Kessler, Ken Kolson, Fred Bates, William Johnston, Bob McClung.



ROW 1: Russell Freeland, Pete Roth, John Alvin, Gil Gray, John Wagnitz, Steve Maechtlen, Bruce Spaller, Bill McAfee. ROW 2: Edward Yeager, David Elgenrauch, Don Zuris, Bill Rankin, Ludwell Denny, H. Ronald Carlson, Al Knapp, William Brown, Tom Hershberger, John Johannesmeyer. ROW 3: George Commons, Jeff Munnell, Sam Scott, James Wilson, Mark Schumacher, Don Gordon, Gary Mott, Don Souders, Richard Coffey.



ALLEGHENY MEN'S DINING ASSOCIATION

This past year the Allegheny Men's Dining Association was formally incorporated under Pennsylvania law. Construction was begun on a new building, which will include recreational facilities. This structure, which provides dining accommodations for forty-five upper classmen, was financed entirely by the club.



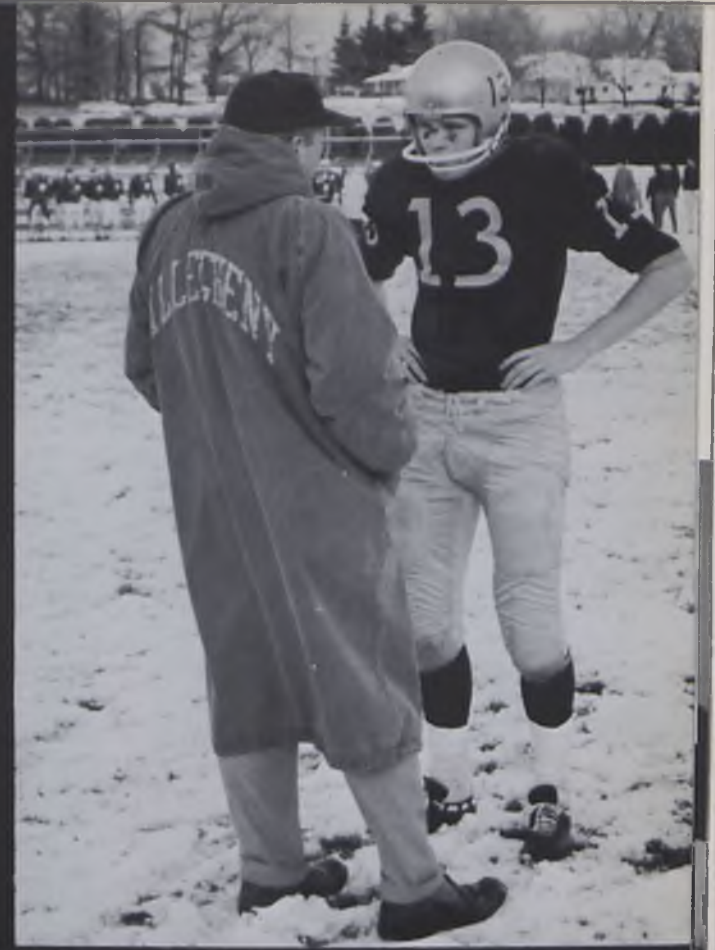
AMDA's board of directors: Roger Stanier, Bob Sovner, Mark Urban, Dave Newitter, and President Cliff Gaus.



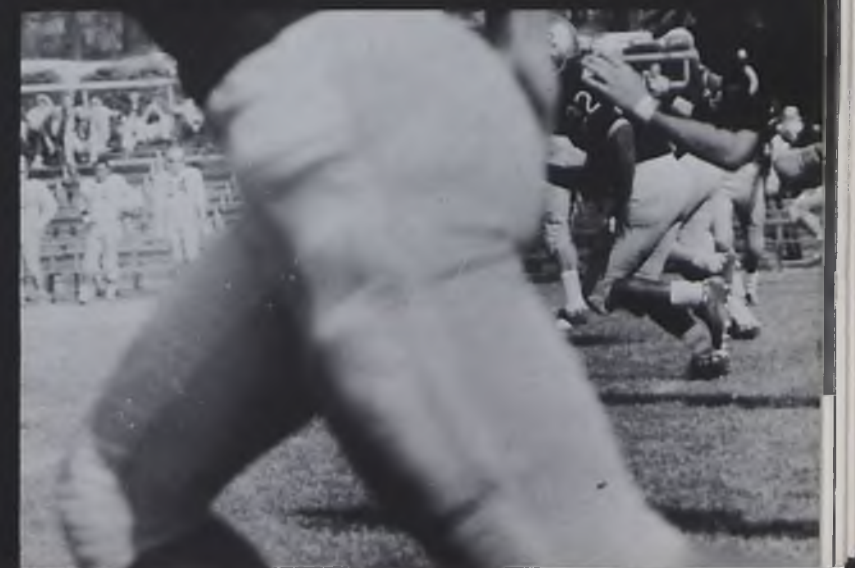
INDEPENDENTS







FOOTBALL





FOOTBALL—1963			
Allegheny*	13	Hiram	12
Allegheny	26	Case	27
Allegheny	24	Rochester	12
Allegheny*	22	Wayne State	21
Allegheny*	27	Bethany	19
Allegheny	12	W & J	25
Allegheny	8	Thiel	31
		WON 4	LOST 3
*Home Games			



The 1963 Gators compiled a 4-3 record which was good for 5th place in the P.A.C.

The team was led by Co-Captains Steve Simonton and Bill Dolde who did an excellent job. The highlight of the season was the record scoring of Dave Wion who led all scorers in the state with a total of 88 points and along with Simonton was an All-P.A.C. selection.



ROW 1: Okrasinski, Wion, Drake, Gilliland, Hartley, Simonton, Dolde, co-captains; Robertson, Williams, S.; Stenberg, Anderson, Butler. ROW 2: Coach Chuckran, Trump, New Nickerson, Thompson, B.; Gray, Maness.

Tomson, W.; Mollick, Gearhart, Bowling, Valentino, Festa. ROW 3: Williams, C.; Blandford, Thompson, P.; Sokol, Cline, Conner, Jessup, Shapiro, Wilson, Warbin, Kinego, Kopecky, Schwartz, Rocha.



CHEERLEADERS

Bonnie Smith, Carol Woodside, Nancy Griffin, Susie Blind, Jackie Riley, Judy Selvage, Ellen Brown, Marty Yerg, Tom Davies, Hoot Conte, Ron Rugh, Nick Arety, Pete Neumeister.



SOCCER
1963

3	Hiram	4
2	Western Reserve	0
1	Slippery Rock	1
3	Case	0
2	Grove City	1
3	Case	1
2	Western Reserve	0

1st Place in PAC

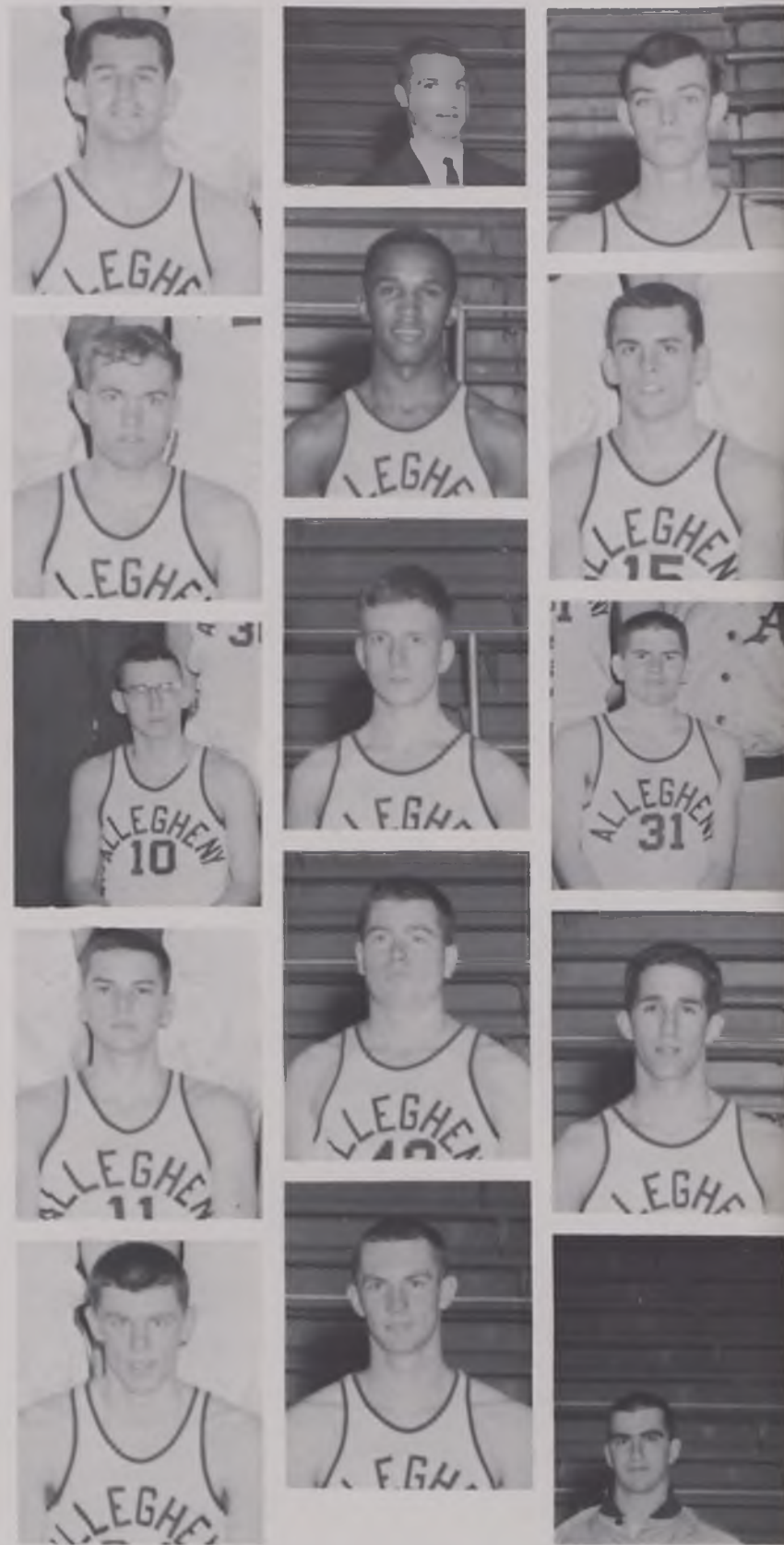


SOCCER

The soccer team posted a won 5, lost 1, and tied 1 record. This record gave them a well deserved first place in the P.A.C. This is a complete reversal of the disappointing 0-6-1 and last place in the P.A.C. posted last year. Lou Moskowitz, Joe Byers, Bill Janowsky, Klaus Klause and Hank McCauley made the All-P.A.C. team.

The team should be strong again next year. Only McCauley, Klause, Bob Barn-dollar, and Pete Holt will be graduating, leaving a fine nucleus.

ROW 1: Preble, Baldwin, Tjaden, Klause, Moskowitz, Barn-dollar, McCauley, *co-captains*; Holt, King, Ellis, Fields, Byers. ROW 2: Coach Hanson, Wisniewski, Sneed, McIntire, Weaver, Janowsky, Mapes, Huselton, Fontana, Corney, Kidder, Stone, *manager*. ROW 3: Ball, Cooper, Kafka, Patrick, Golann, Farrar, Baggerman MacLaren, Lewis.



Marquis, Coach Schriever, Ridgeway, Maness, Schott, Alfred, Tarr, Roberts, Chafer, Böttcher, Gilbert, Nery, Sample, Spencer, Stone (manager).





BASKETBALL

The Gator basketball team started slowly due to the inexperience of the squad. Only one senior, Captain Jim Marquis, is on the team and the usual early season jitters plagued the team. But as the season drew to a close the hoopsters began to jell and it looks as though first year coach Don Schriefer will have a good nucleus on which to build a winner next year.

The team's biggest problem was a lack of height. If Coach Schriefer can find a good big man, the Gators could be a contender in the P.A.C. next year.

Allegheny	66*	Thiel	53
Allegheny	78*	Bethany	99
Allegheny	49*	W & J	59
Allegheny	72	Eastern Mich.	87
Allegheny	62	Wayne	71
Allegheny	63*	Fenn	83
Allegheny	65	Oberlin	68
Allegheny	77*	Hiram	87
Allegheny	68	Grove City	88
Allegheny	58	Rochester	79
Allegheny	67	Alfred	76
Allegheny	48	Bethany	110
Allegheny	48	W & J	61
Allegheny	67	John Carroll	104
Allegheny	64	Carnegie Tech	74
Allegheny	55*	Western Reserve	84
Allegheny	42*	Case Tech	43
Allegheny	78	Thiel	63

*Home Games
WON 2, LOST 16 PAC—8th Place



SWIMMING

- Allegheny 63
- Thiel 31
- Allegheny 49
- Carnegie Tech 46
- Allegheny 35
- Grove City 60
- Allegheny 37
- Wayne 57
- Allegheny 61
- Hiram 32
- Allegheny 63
- Fenn 29
- Allegheny 79
- W. Reserve 15
- Allegheny 52
- Bethany 42
- Allegheny 54
- Slippery Rock 40
- Allegheny 59
- Westminster 36
- Allegheny 53
- Case 41
- Allegheny 33
- W & J 62



The Gator swimming team under the direction of Coach Hanson has had another fine season, placing 3rd in the PAC's.

Seniors Skip Shaffer, Pete Holt, Bob Wilson, and Harold McCann will be missed next year. They have all been lettermen for several years and consistent winners at the P.A.C.'s.

However, it is hoped that the returning lettermen headed by Dave Ludwick, Wayne Wolfram, Jim Zeeb, and Craig Toedtman will form the core of another P.A.C. contender next year.

The Gator swimming team under the direction of Coach Hanson has had another fine season, placing 3rd in the P.A.C.'s.

FRONT ROW: (L-R) McCann, Harris, Wilson, Shaffer, Ludwick, Holt.
 BACK ROW: Coach Hanson, McClung, Olson, Toedtman, Wolfram, Burt, Zeeb.



WOMEN'S ATHLETIC ASSOCIATION

The Women's Athletic Association is organized to provide opportunities to the women students for participation in athletic events. This year's program included volleyball, basketball, bowling, gymnastics and softball. W.A.A. also annually sponsors a Playday for colleges in the area.

ROW 1: Heidi Mehring, *secretary*; Julie Rothe, *treasurer*; Kathy Dye, *vice president*; A. J. Laird, *president*.



VARSITY CLUB

The Block "A" club is an athletic organization made up of the men who have received letters in varsity sports. The club sponsors the crowning of the Homecoming Queen each year, ushers at the football games, and has an awards banquet each spring. This year the club has also undertaken to re-write its constitution.

ROW 1: Pat Butler, Jack Tjaden, Bob Parker, Dave Wion, Hank McCauley, Bill Dolde, *treasurer*; Lynn Hartley, *president*; Klaus Klause. ROW 2: Dick Okrasinski, Bob Warbin, Bill Janowsky, Skip Snyder, Tom King, Dave Ludwick, Carl Stenberg, Dave Morrison. ROW 3: Doug Ellis, John Corbett, Dave Williams, Dave Spencer, John Willett, Craig Toedtmen.



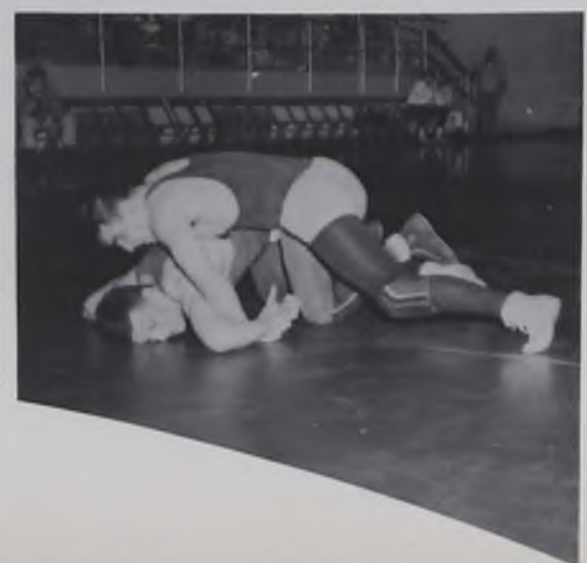
CROSS COUNTRY SQUAD 1963: Danner, Corbett, Beane, Feist, Martin, Benz, Friedl, Bierly, Willson, Coach Schriefer.

CROSS COUNTRY

The Cross Country team finished with a 6-4 record and sixth place at the P.A.C. meet in Cleveland. The team was paced by Bill Benz who set a home course record of 20 minutes 32 seconds. He was supported by Tom Bierly, Jim Beane, Bob Edwards, Al Friedle, and Ken Martin. Coach Dan Schriefer, in his first year as cross country coach, did an excellent job of getting the team in shape.

34	Bethany	21	27	Grove City	30
19	Gannon	37	17	W & J	45
19	John Carroll	43	28	Hiram	27
32	Case	23	28	Thiel	30
18	Western Reserve	41	30	Westminster	26





FRONT ROW: (L-R) Keck, Miller, Andrews, Lewis. BACK ROW: Coach Chuckran, Sokol, Gray, Kunz, Battey.

WRESTLING

The 1964 Gator mat men experienced a rebuilding year. Coach John Chuckran hopes to build a formidable squad around P.A.C. champ Denny Andrews, freshman Bob Kunz, and the ever improving Gil Gray.

The team should be a contender for P.A.C. honors next year as only Bob Parker will be lost to graduation and several good wrestlers, who were injured this year, will be out for the team.

Allegheny	19*	W. Reserve	15
Allegheny	8	Thiel	29
Allegheny	2*	Hiram	29
Allegheny	19*	Wayne	20
Allegheny	16	Rochester	14
Allegheny	15	Alfred	16
Allegheny	12*	Grove City	28
Allegheny	14	Case	17
Allegheny	8	W & J	25

*Home Matches

PAC—3rd Place

INTRAMURALS

The intramural sports program under the directorship of Mr. Robert Garback, provides athletic competition for all upperclass men. A wide variety of sports are presented for the exercise, enjoyment, and relaxation of the participants. Activities vary from ping-pong to a cross-country race.

As of this date, the Phi Psis are again leading the race with the most points. (Points are awarded to a team according to where it finishes in each sport.) The Phi Psi's have won the All-Sports Trophy for the last four years, and it looks as if they will capture it again for an unprecedented fifth straight year.



	L=League	P=Postal	
L 1385	Grove City		1350
P 1385	Davis Elins		1306
L 1394	Geneva		1359
L 1383	Indiana		1399
P 1383	U. of Illinois		1299
L 1392	Clarion		1369
L 1414	W. Virginia		1427
L 1414	Carnegie Tech		1397
L 1415	Geneva		1382
L 1425	Clarion		1358
P 1425	U. of South Carolina		1416
P 1425	Ohio Wesleyan		1338
L 1394	Grove City		1379
L 1394	Alliance		1266
L 1409	Indiana		1415
L 1402	W. Virginia		1445
L 1402	Carnegie Tech		1395

RIFLE

The Gator rifle team, under the expert coaching of Staff Sergeant Ted Gayeski, has had an excellent year. The highlight of the season came on January 31st when the team broke the three year school record by scoring 1425 points against Clarion State. The participants in the record breaking performance were Rolf Arentzen, John Spangler, Jim Balent, Bob Greenblat, and Alan Hassell.

Graduation will only claim Captain Jim Balent, so another good year should be experienced next winter.



FRONT ROW: (L-R) Wolf, Arentzen, Bragg, Hassell. BACK ROW: Capt. Gozur, Neumeister, Greenblatt, Hoffman, Balent, Spangler, Coach St. Gayeski.



BASEBALL

The 1963 Ball Club captured the P.A.C. pennant for the fourth straight year with a 12-3 record. John Willett led the team in hitting with a .457 average while Jim Marquis led the team in home runs with two and split the pitching chores with Dave Williams.

Five Gators made the all-P.A.C. team. They were first baseman Willett, third baseman Bob Hinker, outfielder Dick Blackwood, catcher Stoner Tracy, and pitcher Williams. With seven lettermen returning the Gators should again be in the thick of the fight for the title in the P.A.C.

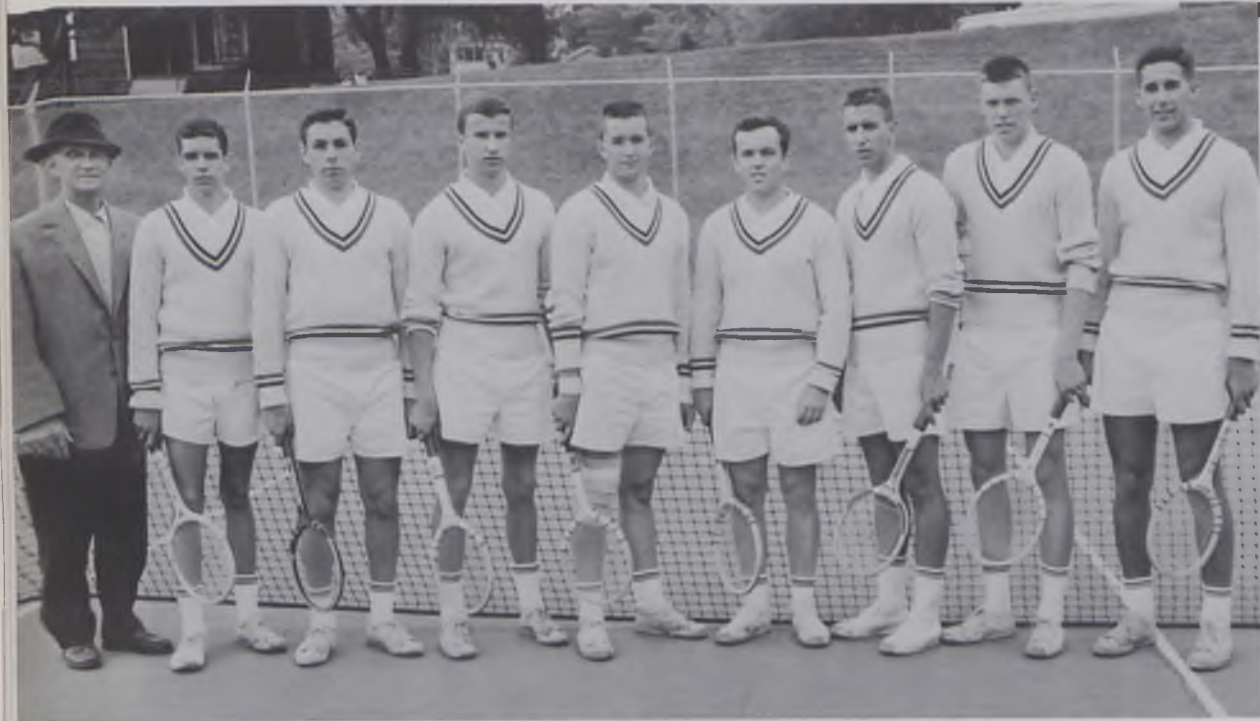


ROW 1: Bush, Johnson, Marquis, Rinker, Blackwood, Seedyke, Tracy, McElroy, Willett. ROW 2: Coach Garbark, Barbera, Wuertzer, Okrasinski, Williams, Ewart, McCain, Valentino, Hooghkirk (Mgr.).



1963 BASEBALL RECORD		
7*	Slippery Rock	6
6	W & J	7
7	Bethany	2
12	Thiel	1
9	Pitt	23
<i>Rain</i>	Grove City	—
10*	W & J	5
15	Fenn	10
17*	Bethany	5
8*	Thiel	4
4*	Western Reserve	3
12*	Western Reserve	1
3	Hiram	1
3*	Wayne State	2
2*	Wayne State	1
5*	Pitt	11
	*Home Games	





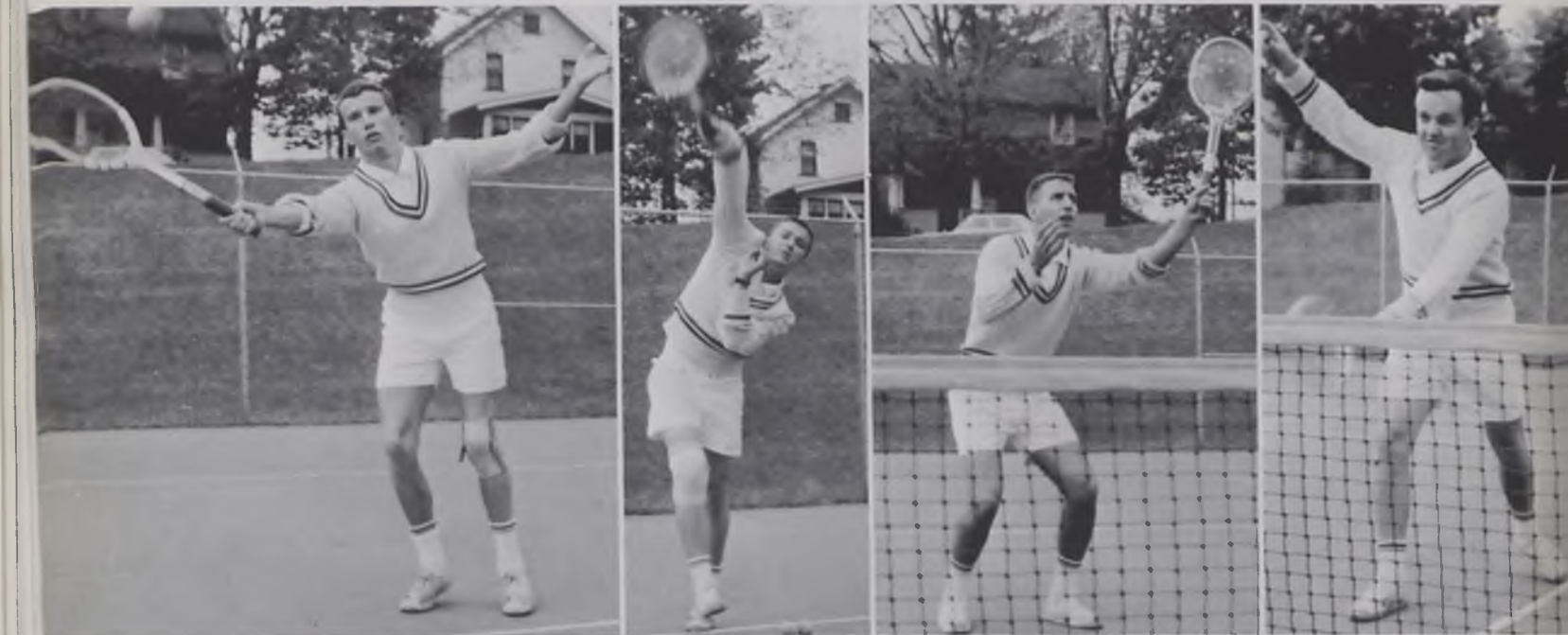
Coach Way, Areson, Rudick, Kraiger, Gill, Finnerty, Lipitz, Spencer, Nery.

TENNIS

Once again Coach Way's tennis team was undefeated in dual meet competition posting a 9-0 record. The team now has the longest consecutive win streak in the school history. They have won 25 matches in a row over a three year period.

The team was led by seniors Mike Finnerty, Mike Lipitz, junior Tim Gill, and sophomore Jack Kraiger.

With two of the above mentioned men returning it is hoped that another successful season is enjoyed.



GOLF RECORD

1963

1½	Grove City	5½
10½	John Carroll	5½
½	Wayne State	15½
15*	Case	1
13*	W & J	7
3*	Slippery Rock	3
8½	Bethany	7½
6½	Thiel	13½
9½*	Western Reserve	6½
11*	Hiram	9

FIRST PLACE in PAC
Tournament
*Home Games



Coach Chuckran, Williams, Edgcombe, Snyder, Davis, Staren.

GOLF

The 1963 Gator Golf squad finished their tour by capping first place at the P.A.C. tourney at Greenville. The overall season's record was 6 wins, 3 losses, and 1 tie. The team leader, Mike "Stumpy" Williams was medalist of the P.A.C.'s. It is hoped that this year's team can continue to sink those long putts for birdies.





ROW 1: Morrison, Reiley, Edwards, Benz, Drake, Von Roch, Tulloch, Czech. ROW 2: Stone (Mgr.), Wion, Romig, Lyndall, Stenberg, Gray, Schwartz, Wilson. ROW 3: McCabe, Corbett, Pore, Bradford, Gordon, King, Willson.



1963 TRACK RECORD

71*	Edinboro	65
61	Carnegie Tech	79
27	Grove City	113
31	Case	105
32*	Bethany	80
	Western Reserve	52
65	John Carroll	70
81*	W & J	55
105*	Thiel	30
18	Hiram	109



TRACK

The 1963 Gators finished with a 3-6 record. However, they finished strong, winning two of their last three meets which is an indication that there are better things to come. The team was built around Bill Benz, George Tullach, Dave Morrison, and Bob Edwards all of whom are returning.

If a few of the field events can be bolstered by the new crop of freshmen a very good season could be in store this year.



SENIORS



We are the Seniors now, and this is really our book because we *are* the Seniors. It says something about us and our school and what we've been doing here, although it can't say it all. In 75 years it too will be historical. But some things will be the same, and meaningful then, just as some of the things in that first *Kaldron*

ROOMS
FOR RENT
ONLY \$140



ROW 1: Hank Drucker, Andrew Shapiro, Sanford Levy, Stephen Simon-
ton. ROW 2: Elton Bagley, Janice Giliberty, Sanford Chilcote. ROW 3:
Richard Fowler, John Crill, James Meadowcroft, David Graham. ROW 4:
Karen Darlington, Sandy DeMarino, JoAnne McCalister. MISSING:
Lana Hough, Sherry Westerland.

WHO'S WHO IN AMERICAN COLLEGES AND UNIVERSITIES

PHI BETA KAPPA

From contemplation
one may become wise,
but knowledge comes
only from study.

—E. A. Newton

Not perfection as a final
goal, but the ever-enduring
process of perfecting, ma-
turing, refining is the aim of
living . . .

—Dewey

The world has so much
mystery for us. Perhaps the
most inexplicable truth of
Man is that mere existence
will not suffice, but that his
nature impels him to seek
and to know.

Man persists, man with
the capacity to dream
and hope and dream
again. Man, with his ca-
pacity for shock and
grief, is participation in
the great truth of conti-
nuity.

New York Times
November 24, 1963



Maron Brown



Gary Hickernell



Susan Werner



Richard S. Wodzinski



Joanne H. Alley
Rochester, New York
History

Sara Altstetter
Johnstown, Pennsylvania
French

John Alvin
Pittsburgh, Pennsylvania
Pre-Medicine

Jean Marie Adamson
Baltimore, Maryland
Biology



Janice R. Allgeier
Sacramento, California
Biology-Pre-Medicine

Jill Anderson
Warren, Ohio
English



William V. Armitage
Hamburg, New York
Economics



Judy Auld
Pittsburgh, Pennsylvania
Biology

James S. Balent
Washington, Pennsylvania
Pre-Medicine

Robert Barndollar
Williamsville, New York
English

Frank Barnhart
Mount Pleasant
Pennsylvania
Sociology

Craig Bartholomew
Williamsville, New York
Philosophy-Religion



Amberson C. Bauer
Kittanning, Pennsylvania
Pre-Medicine

Fred Bauschard
Erie, Pennsylvania
Pre-Medicine



Robert S. Bates, Jr.
Meadville, Pennsylvania
Political Science

Robert D. Beck
Pittsburgh, Pennsylvania
Pre-Medicine
Political Science

William J. Beggs
Belle Vernon, Pennsylvania
Mathematics



Mary Jo Bell
Natrona Heights
Pennsylvania
English



William H. Benz
East Cleveland, Ohio
Chemistry

Elliott J. Berv
Great Neck, New York
Psychology

John Bickerton
Monaca, Pennsylvania
History

Violet Biekarck
Warren, Pennsylvania
English

Lawrence B. Bier
Schenectady, New York
History-Political Science



Thomas C. Bierly
Endwell, New York
Chemistry



Clara Birchak
Latrobe, Pennsylvania
Geology



Timothy Bishop
Northampton, Massachusetts
Psychology



Linda Brownfield
Rocky River, Ohio
Elementary Education



Geraldine Buchheit
Merrick, New York
Elementary Education



Barbara Bunn
DeWitt, New York
History



E. Ann Bixler
Pittsburgh, Pennsylvania
Sociology



Dennis W. Bleakley
Edinboro, Pennsylvania
Pre-Medicine

H. Ronald Carlson
Jamestown, New York
Pre-Medicine, Biology



William R. Burkhardt
Ridgewood, New Jersey
English



Betsy Burr
Findlay, Ohio
Elementary Education



Robert R. Cain
Sharon, Pennsylvania
History



William Andrew Bradnan
Columbia Station, Ohio
Pre-Medicine, Chemistry



John R. Brancoto
DuBois, Pennsylvania
Economics



Marlene Brown
Pittsburgh, Pennsylvania
Elementary Education

William E. Brown, II
Pittsburgh, Pennsylvania
Economics



Maron Brown
Meadville, Pennsylvania
Pre-Medicine



Sanford M. Chilcote, Jr.
Oakmont, Pennsylvania
English



Gail Claffee
Wilmington, Delaware
English

Recipes from the kitchen of Hulings Hall

Coffee—Drop two berries of coffee into three gallons of luke-warm water; stir briskly for five minutes; add three berries of chickory and a handful of tan-bark; bring to a boil and serve cold.

Buckwheat Cakes—Dissolve one cake of compressed yeast in a gallon of skim-milk; when thoroughly dissolved stir in three quarts of fine, sifted saw-dust; bake on a cold griddle.

Breakfast Gems—Make a nugget of dough about the size of a thimble; encase it in a two inch charcoal crust and serve without frosting.

South Carolina Pie—Make a lower crust and bake in a kiln till thoroughly dried; fill with crushed pumpkin rind; cover with transparent frosting and let it stand for two weeks before serving.

Boiled eggs—Carefully sponge each egg; puncture each with a hairpin, thus making an aperture in the shell through which the embryo may take a last look before expiring; boil 3 minutes.

—KALDRON 1889

John K. Cochran
Wellsville, New York
Psychology



Richard C. Coffey
Baden, Pennsylvania
Pre-Medicine



R. Dale Colby
Jamestown, New York
History



Ron E. Comfort
Franklin, Pennsylvania
History-Political Science



Charlotte DeLancey
Vero Beach, Florida
Economics



Sandy DeMarino
Meadville, Pennsylvania
Political Science



Frank V. DiBella
Pittsburgh, Pennsylvania
Pre-Medicine



William G. Dolde
Connellsville, Pennsylvania
History



George W. Commons
Nanty-Glo, Pennsylvania
Chemistry



Judy Corcoran
Arlington, Virginia
Elementary Education



Henry Drucker
Rutherford, New Jersey
Philosophy



Richard K. Ebken
Glenshaw, Pennsylvania
Pre-Medicine



Joby Corl
LaVale, Maryland
Psychology



John Crill
Mercer, Pennsylvania
English



Stan Czech
Meadville, Pennsylvania
Biology

Linda J. Dashem
Warren, Pennsylvania
Political Science



Karen A. Darlington
Kennett Square
Pennsylvania
Elementary Education



Robert A. Edwards
Chambersburg
Pennsylvania
Pre-Medicine



Paul Fellows
Norwich, Connecticut
English



Lynette Kathryn Erzen
Conway, Pennsylvania
Elementary Education



June Fair
West Seneca, New York
Sociology

Onnlce Ferguson
Alden, New York
Elementary Education



Through the kindness of the authors, the Library has received the following practical and useful works which, on account of their edifying character, the Librarian desires every new student to read and digest:

1. *What I Don't See*, by Arthur Rubinoff
2. *Pitfalls of Committees*, by Henry Drucker
3. *Penny-a-Minute Sex*, by Karen Darlington
4. *The Dean's Best Friend*, by Norman Greene
5. *Walk Don't Run*, by Bill Benz
6. *Grace*, by Rick Momeyer
7. *My Current Fund*, by John R. Brancato, Esq.
8. *The New Little Women*, by Lana Hough
9. *Greek Mythology*, by William Armitage
10. *"All the Way with J.R.J.," and Other Campaign Slogans*, by J. Robert Johnston

Carol Ann Fetcko
Bethel Park, Pennsylvania
English



Margaret Flounders
Hingham, Massachusetts
Biology



Jeffrey B. Franklin
Pittsburgh, Pennsylvania
Sociology



Russell C. Freeland
Conneaut Lake
Pennsylvania
Psychology



Marilyn Frost
Pittsburgh, Pennsylvania
Elementary Education



Richard W. Fowler
Warren, Pennsylvania
Psychology



Dorothy Ann Fuhrer
Springfield, New Jersey
Psychology



David Fulton
Willoughby, Ohio
History



Jeannette Gape
Meadville, Pennsylvania
History



Louis Garcia
Larchmont, New York
History



Clifton Robert Gaus
Pittsburgh, Pennsylvania
Pre-Medicine

Larry L. Gilbert
Guys Mills, Pennsylvania
Pre-Medicine



Janice Angela Giliberty
West Hempstead, New York
Elementary Education



Claudia Gilkey
Allison Park, Pennsylvania
Mathematics



Timothy D. Gill
East Aurora, New York
Mathematics



Catherine Annette Gilliland
Snyder, New York
History



Theodore A. Givler, Jr.
Erie, Pennsylvania
Psychology



Mary Lee Glenn
Harrisburg, Pennsylvania
History



Dawn Goodridge
Hubbard, Ohio
French



Diane Gottlieb
Meadville, Pennsylvania
Sociology



David Graham
Maplewood, New Jersey
Chemistry



Nancy Lee Griffin
Pittsburgh, Pennsylvania
English

Sue A. Grodsky
Croton-on-Hudson
New York
English

John W. Gordon
Brownsville, Pennsylvania
English



Norman Greene
West Hartford, Connecticut
History-English



Lynne C. Grubb
Elmira, New York
Elementary Education



Gail Judith Guenter
Smethport, Pennsylvania
German



Sandra Gustavson
Erie, Pennsylvania
Psychology



Jill Guthrie
Butler, Pennsylvania
English



Nancy G. Hallas
Greenwich, Connecticut
Philosophy



John M. Hagstrom
Jamestown, New York
Economics

Lynn Hartley
Amherst, New York
History



Susan Hendricks
Meadville, Pennsylvania
Economics

Glenn Randolph Hickernell
Meadville, Pennsylvania
Drama



Ann Marilyn Harvey
Rochester, New York
Elementary Education



Anita Hirsch
Stamford, Connecticut
French

Robert E. Hoehn
Lakewood, Ohio
Political Science



Ruth E. Hoerner
Ithaca, New York
French



Peter L. Holt
West Chester, Pennsylvania
Psychology



Lana Beth Hough
Pittsburgh, Pennsylvania
English



Herbert E. Howe, Jr.
North Plainfield
New Jersey
Psychology



Frederic W. Howk
West Chester, Pennsylvania
Geology

Roberta Huch
Mars, Pennsylvania
Spanish
Elementary Education



Howard E. R. Hutton
Amherst, New York
Economics



George W. Jackson
Conneaut, Ohio
Pre-Medicine



Thomas C. Jamison
Oil City, Pennsylvania
Pre-Medicine



Mary Ann Janik
Lyndhurst, Ohio
English



David Johe
Columbus, Ohio
Geology



J. Robert Johnston
Oil City, Pennsylvania
Political Science



Caroline E. Keedy
Kenmore, New York
Psychology



Karen Keller
Johnstown, Pennsylvania
English

Klaus J. Klause
Franklin, Pennsylvania
Mathematics



Sandra Kellgren
Jamestown, New York
Political Science



Roger A. Klein
Timberlake, Ohio
Political Science



Emil Kloske
Guantanamo Bay, Cuba
Mathematics



Albert Knapp
Schenectady, New York
Political Science



Karen Ann Kuchta
Boonton, New Jersey
Spanish



Terry J. Koerner
Pittsburgh, Pennsylvania
Biology



Frederick Koesling
Pittsburgh, Pennsylvania
History



Edith Anne Kovel
West Mifflin, Pennsylvania
Psychology



Mordecai Z. Labovitz
Rochester, New York
Political Science



Karen Elizabeth Lane
Westfield, New Jersey
History

"An Excuse"

A student of the Virgil class
Sat ponying in his room,
There was dearth of time for cramming,
To-morrow was his doom;
But his room-mate sat beside him,
While he urged along his steed,
And heard, with eager auricles,
The pale-faced student read.
The p. f. student faltered,
and heaved a sigh of sorrow,
Then, bending toward his room-mate,
Said, "I'll be sick to-morrow;
Take a message and a notelet
To the Prof., so he may know,
For we're not half through the lesson,
And it's most time for the show."

—KALDRON 1889

Richard M. Leadley
Pittsford, New York
Mathematics



Tom Leet
Erie, Pennsylvania
Geology



Marilyn Lenz
New Castle, Pennsylvania
English



Sandy Levy
Pittsburgh, Pennsylvania
Pre-Medicine



Richard P. McElroy
Springfield, Pennsylvania
Political Science



Nancy McElroy
Pittsburgh, Pennsylvania
Art



Diana McKeon
Pittsburgh, Pennsylvania
Psychology



Barbara Ann McMurray
Washington, Pennsylvania
English



Martha Jane Lindsay
Poland, Ohio
Elementary Education



Winnie Lyons
Erie, Pennsylvania
Spanish

Sheila B. McTighe
Narberth, Pennsylvania
English



Stephen J. Maechtlen
Westport, Connecticut
History



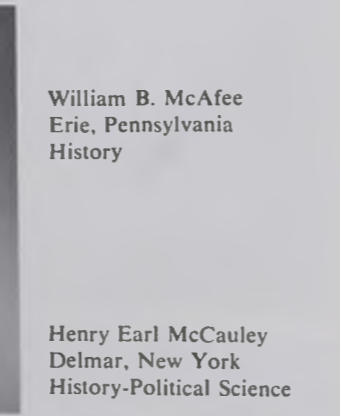
Leonard G. London
Fair Lawn, New Jersey
English



Sheila London
Fair Lawn, New Jersey
Elementary Education



William B. McAfee
Erie, Pennsylvania
History



Henry Earl McCauley
Delmar, New York
History-Political Science

Michael Markley
New Castle, Pennsylvania
Pre-Medicine



Robert W. Mathers
North East, Pennsylvania
Economics



James R. Marquis
West Middlesex
Pennsylvania
History

Marysue Mason
Painesville, Ohio
Elementary Education

Jo Ann McCalister
Allison Park, Pennsylvania
Elementary Education



Henry A. S. Mathis
Seymour, Connecticut
Political Science

SENIOR VITASCOPE
 "O wad some power the giftie gie us,
 To see oursels as ithers see us!"

Name	Remarkable For	Favorite Resort	Occupation In College	Destiny
Miss Auld	Never being Seen	Bed	Sleeping	Hotel Clerk
Brancato	Pitches	I.C.C.	Propositioning	Pirate
Miss Claffee	Smiles	Frat Houses	Flirting	Old Maid
Miss Griffin	Vivacity	Parties	Out nights	Ditto
Miss Darlington	Kisses	Teddy's	Mother	Tramp
Fellows	Ears	Grill	Thinking	Bachelor
Miss Frost	Patience	Card Table	Expression	Librarian
Gordon	Posture	Apartment	Opium-eating	Cow-boy
Hoehn	Sex	?	Rebel	Lecturer
Miss Hough	Charm	Dean's Office	Arbitration	Loafer
Koessling	Manners	W.A.R.C.	Poker	Stage
Miss M. S. Mason	Gray Hair	Norway	Screaming	Housemother
Mathis	Tact	Masons	Tolerance	Parson
Monnheimer	Status	Brooks Lobby	Scheming	Butcher
Quattrocchi	Cars	Any Crowd	Hosting	Clown
Rubinoff	Dedication	Library	Cynic	Poet
Miss Ruppel	Satire	Coffeehouse	Taking Pills	Bar-tender
Shaffer	Dish-pan Hands	Water	None	Politician
Miss Thoburn	Horsemanship	South	Playing Cello	Jockey
Miss Veglia	Teddy Bear	D.C.	Saying "no"	Bookmaker
Miss Werner	Brawn	Observatory	Everything	Quack

Joseph Matson
 Vandergrift, Pennsylvania
 Sociology



James A. Meadowcroft
 Berwyn, Pennsylvania
 Pre-Medicine



Norman C. Mowry
 Rochester, New York
 Biology, Pre-Medicine



Henry R. Newton
 Pittsburgh, Pennsylvania
 Political Science

Sarah Jean Nichols
 Bath, New York
 Biology

Caroline Moury
 Alden, Pennsylvania
 Mathematics



Linda Murray
 Sharon, Pennsylvania
 Elementary Education

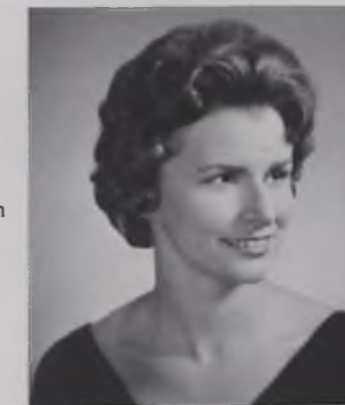


Richard W. Momeyer
 Monroeville, Pennsylvania
 Philosophy



Chet Meyers
 Greensburg, Pennsylvania
 Sociology

Leslie Elizabeth Nogi
 Linden, New Jersey
 Speech Therapy
 Elementary Education



Robert K. Parker
 Natrona Heights
 Pennsylvania
 Physics

Bette Mitchell
 Beaver, Pennsylvania
 Sociology
 Elementary Education



Ivy Mok
 Hong Kong
 Sociology



Donald B. Monnheimer
 Maplewood, New Jersey
 History



Krispen Jane Moore
 East Liverpool, Ohio
 History



John Morison
 Cleveland, Ohio
 Sociology



Elizabeth Parenti
 Brooklyn, New York
 Spanish



Roy R. Patterson
 Pittsburgh, Pennsylvania
 English



Robert L. Peel
 Farrell, Pennsylvania
 Pre-Medicine, Biology



John D. Peterson
 Meadville, Pennsylvania
 Economics



Carlyn Pleasants
Farmingdale, New York
English

E. Jean Price
Oakmont, Pennsylvania
French

Donald H. Protheroe
Pittsburgh, Pennsylvania
Psychology

Marilyn Petti
Beaver Falls, Pennsylvania
Elementary Education



Wentworth E. Potter
Novelty, Ohio
Physics

Kathleen Quinlan
New Hyde Park, New York
Elementary Education



Jane Raber
West Acton, Massachusetts
Elementary Education



William R. Ralston
Butler, Pennsylvania
Geology

Richard A. Reiss
Meadville, Pennsylvania
Art

Earl W. Reynolds
Farrington, Connecticut
Spanish

William M. Riggs
Glenshaw, Pennsylvania
Sociology

Marybeth Rood
Jamestown, New York
English



Peter D. Roth
Cleveland, Ohio
History

Arthur G. Rubinoff
Pittsburgh, Pennsylvania
Political Science



Jay Rosenberg
Washington, D. C.
Pre-Medicine
Religion-Philosophy

William J. Ruehle
Cleveland, Ohio
Economics

Mary Butler Ruppel
Pittsburgh, Pennsylvania
International Studies



Don Schumacher
Elmont, New York
Pre-Medicine, Biology



Peter Schwartz
Rego Park, New York
Sociology, Political Science

Paula W. Scizak
Clark, New Jersey
Pre-Medicine, Chemistry

David W. Semian
Pittsburgh, Pennsylvania
Chemistry

Diane E. Shafer
Meadville, Pennsylvania
English

Richard Shaffer
Butler, Pennsylvania
History



Andrew Shapiro
Scarsdale, New York
English



Diane L. Shorr
Pittsburgh, Pennsylvania
Mathematics



Gretchen Sigler
Pittsburgh, Pennsylvania
English



Ronald C. Silber
Millburn, New Jersey
Political Science



Frank Bernard Simchak
McKees Rocks
Pennsylvania
Pre-Medicine, Biology



Stephen L. Simonton
Cody, Wyoming
Political Science, History



Bonnie Ann Smith
Pittsburgh, Pennsylvania
Elementary Education



Linda F. Smith
Greenwich, Connecticut
English

Jerry R. Sowers
Tucson, Arizona
Pre-Medicine



Randall S. Smith
Vestal, New York
Mathematics



Bruce E. Spaller
Conneaut, Ohio
History



Roger N. Stanier
Pittsburgh, Pennsylvania
Physics



Sheila Stanley
Chestnut Hill
Massachusetts
Sociology



Robert W. Stinson
Ridgewood, New Jersey
History



Robert L. Stauffer
Meadville, Pennsylvania
Political Science



Susan Steele
Orange, Connecticut
French



Phillip W. Stevens
Scranton, Pennsylvania
Sociology

THE NEW KING SOLOMON

The man that goeth to college is of few days and full of trouble. He buyeth a Freshman hat and the heathen, even the Sophomores, take it away; yea, with force and cunning do they despoil him thereof. When he becometh a Soph. he exulteth; he danceth for joy and exclaimeth "Imesum!" He tosseth his locks and is proud, but the Faculty sitteth upon him and he is sore discomforted.

He goeth forth to coast, even to [tray] upon the great hill, and behold the cop chaseth him and captureth his silk hat.

In the evening he goeth to see his girl. In the morning he returneth and findeth the door locked. He shouteth, but his chum heareth him not. He climbeth up over the porch but the windows are fastened. The wind is cold and it raineth; his teeth do chatter, and he waxeth angry. Yet he waiteth till morning, even till late day, until the servant shall come and open the door for him. His eyes are heavy with sleep, and he flunketh all day because thereof.

Blessed is the man who putteth not confidence in himself, nor runneth for office, neither longeth to be the boss over all the people, nor striveth to capture all the honors of the college, for he shall flourish and prosper. His friends shall be many and all men shall honor him.

The ambitious man is not so. But his friends do leave him and his enemies torment him sore. With cunning do they come against him and with schemes do they defeat him. His way shall be hard and his goal shall be afar off. Verily, he shall never get there.



Kenneth Stone
New York, New York
History



Daniel H. Straub
Pittsburgh, Pennsylvania
Political Science

Barry W. Sullivan
Waukesha, Wisconsin
History



Ellen Taylor
Cuyahoga Falls, Ohio
English



Terrell Ann Taylor
Newfane, New York
Sociology



Gwendolyn Terhune
Bedminster, New Jersey
Psychology



Marshall Tupper
Pittsburgh, Pennsylvania
History



Elizabeth Ann Urbaitis
Warren, Pennsylvania
English



Eleanor M. Veglia
Colonia, New Jersey
Political Science



Robert L. Von Roch
East Islip, New York
Political Science



Mary Elizabeth Thoburn
Cleveland Heights, Ohio
Elementary Education



Harry M. Thomas
East McKeesport
Pennsylvania
English

Joel D. Vormelker
Cleveland Heights, Ohio
Forestry



Joan Walling
West Orange, New Jersey
Elementary Education



Ronald E. Thomas
Wayne, New Jersey
Chemistry



Brooke Thompson
Erie, Pennsylvania
Psychology



Robin Thurman
Lake Bluff, Illinois
French

Judith Traskos
Glastonbury, Connecticut
History

Nancy M. Watkins
Port Allegany, Pennsylvania
Elementary Education



Lydia Marion Way
Pleasantville, New York
English
Elementary Education



Sally Watson
Cleveland, Ohio
Political Science

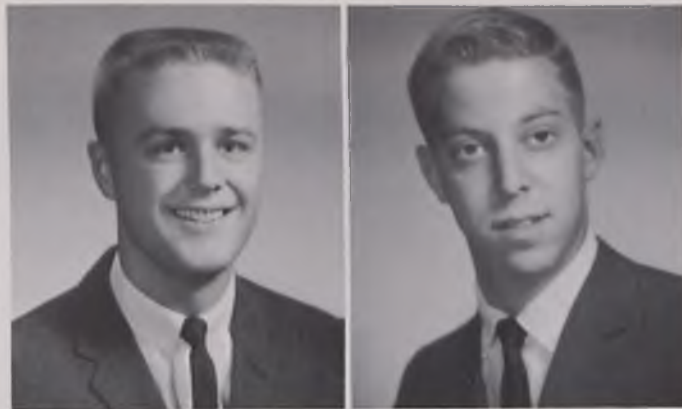
Spencer C. Watson
Meadville, Pennsylvania
Chemistry

Carl J. Todaro
Irwin, Pennsylvania
Psychology



Sally Jane Way
Columbiana, Ohio
Psychology





Alan D. Weinstein
Maplewood, New Jersey
Economics

David L. Wescott
Meadville, Pennsylvania
English

Sherry G. Westerland
Tonawanda, New York
English

Richard Weber
Rochester, New York
Pre-Medicine



Susan E. Werner
Warren, Pennsylvania
Mathematics, Physics



Edward W. Wilson
Edgewood, Pennsylvania
Political Science



Robert E. Wilson
Cos Cob, Connecticut
Economics



Sue Ellen Wolfram
Murrysville, Pennsylvania
Economics



Edward N. Yeager
Meadville, Pennsylvania
Mathematics



Martin C. Yerg, Jr.
Elmira, New York
Mathematics



Marcia Anne Yetter
Pittsburgh, Pennsylvania
Art

Seniors
Not pictured



John Altman
Erie, Pennsylvania
Economics

Elton Bagley
North East, Pennsylvania
Drama

Joseph Calabrese
Jamestown, New York
Chemistry

James Cesario
Derby, Connecticut,
History

Ruth Ann Garomon
Cresskill, New Jersey
Modern Languages

Marcelline Gibbs
Erie, Pennsylvania
Psychology

Robert Graff
Meadville, Pennsylvania
Sociology

Gary Hickernell
Guys Mills, Pennsylvania
Chemistry

John Johannesmeyer
West Colombia
South Carolina
Mathematics

Sally Johnson
Greensburg, Pennsylvania
English

Ronald Kalla
Bethel Park, Pennsylvania
Art

Charles Kalson
Pittsburgh, Pennsylvania
Political Science

Martin Leeper
Gibsonia, Pennsylvania
Economics

Harold McCann
Meadville, Pennsylvania
Mathematics

Susan Mason
Pittsburgh, Pennsylvania
History

George Moertel
Conneautville, Pennsylvania
Economics

Suzanne Paisley
Bethel Park, Pennsylvania
Chemistry

John Quattrocchi
Barrington, Rhode Island
English

Patricia Steele
Glen Rock, New Jersey
Elementary Education
Spanish

William Watterson
Bradford, Pennsylvania
Mathematics

Walter Wayne
Meadville, Pennsylvania
History

Norman Williams
Meadville, Pennsylvania
Political Science

Richard Wodzinski
Colonia, New Jersey
Chemistry

SENIOR INDEX

ADAMSON, Jean *Biology*
Alpha Chi Omega, J.A., Religious Activities Committee, Bio Lab Instructor.

ALLEY, Joanne *History*
AWS, Alden Scholar, CU Staff, Brooks Library, Pi Gamma Mu.

ALLGEIER, Janice *Biology*
Alpha Xi Delta, WAA, Foreign Students Committee, Chemii, Biology and Chemistry Lab Instructor.

ALTMAN, John *Economics*

ALTSTETTER, Sara *Modern Languages*
Alpha Xi Delta, Alden Scholar, CU Staff, Library, French Club, Chapel Choir, Outing Club.

ALVIN, John *Pre-Medicine*
Theta Chi, Track, Newman Club, CU Staff.

ANDERSON, Jill *English*
Kappa Alpha Theta.

ARMITAGE, William *Economics*
Alpha Chi Rho, AUC, Soccer, Baseball, Inter-fraternity Council President, Student Affairs Committee, Arnold Air Society.

AULD, Judith *Biology*
Kappa Alpha Theta.

BALENT, James *Pre-Medicine*
Phi Delta Theta, CU, Intramurals, Playshop, Rifle Team.

BARBER, Charles *Chemistry*
Theta Chi, Intramurals.

BARNDOLLAR, Robert *English*
Phi Delta Theta, CU, Soccer, Track, Intramurals.

BARNHART, Frank *Sociology*
Alpha Chi Rho, ROTC Band, Pi Gamma Mu, Alden Scholar.

BAUER, Amberson *Pre-Medicine*
Phi Kappa Psi, CU, ROTC, Campus.

BAUSCHARD, Frederick *Pre-Medicine*
Sigma Alpha Epsilon, CU.

BEGGS, William *Mathematics*
Sigma Alpha Epsilon, Intramurals, Campus, Kaldron, Pi Delta Epsilon, Alden Scholar, Student Counselor.

BENZ, William *Chemistry*
Phi Gamma Delta, CU, Cross Country, Track, Campus, Chemii.

BERV, Elliot *Psychology*
AUC, Class Vice President, Intramurals ROTC, Outing Club.

BAGLEY, Elton *Drama*
ROTC, Playshop.

BIEKARCK, Violet *English*
Kappa Alpha Theta, Foreign Students Committee, Cwens, ASG, AWS, J.A., Alden Scholar, German Club, Pi Delta Epsilon.

BIER, Lawrence *History, Political Science*
CU, ROTC.

BIERLY, Thomas *Chemistry*
Alpha Chi Rho, Track, Cross Country, Chemii, Dean's List.

BIXLER, Elizabeth *Sociology*
Alpha Xi Delta, Fund Drive, CU, AWS, Thoburn Club, Chapel Choir, Singers.

BLEAKLEY, Dennis *Pre-Medicine*
Delta Tau Delta, Student Counselor, ROTC Band, CU, Playshop, Alden Scholar.

BRADNAN, William *Chemistry*
Alden Scholar, Chemii.

BRANCATO, John *Economics*
AUC Treasurer, CU, ROTC.

BROWN, Marlene *Elementary Education*
Alpha Gamma Delta, AWS, Chapel Choir, Campus, Kaldron, Playshop, Kappa Delta Epsilon, Pi Delta Epsilon.

BROWN, Maron *Pre-Medicine*
Kappa Kappa Gamma, AWS, J.A., WAA, Chapel Choir, Singers, Sinfonietta, Angels, Alden Scholar, Phi Beta Kappa, NSF Research, Student Counselor.

BROWN, William *Economics*
Theta Chi, Arnold Air, Campus, Playshop.

BROWNFIELD, Linda *Elementary Education*
WAA, Outing Club, CU.

BUCHHEIT, Geraldine *Elementary Education*
Kappa Kappa Gamma, AWS.

BUNN, Barbara *History*
Kappa Kappa Gamma, AUC, AWS, CU, WAA, Campus, Angels, Alden Scholar, Pi Gamma Mu.

BURKHART, William *English*
Arnold Air, Campus, Literary Magazine, Playshop, Socrates Club, WARC, Pi Delta Epsilon.

CAIN, Robert *History*
Sigma Alpha Epsilon, Intramurals, IFC.

CALABRESE, Joseph *Chemistry*
Singers, ROTC, Chemii, Newman Club.

CARLSON, Ronald *Pre-Medicine*
Theta Chi, CU, Soccer, Intramurals.

CESARIO, James *Political Science, History*

CHERRY, Vickey *Sociology*
Chapel Choir, Playshop.

CHILCOTE, Sanford *English*
Campus, Literary Magazine Editor, Playshop, Philo-Franklin.

CLAFFEE, Gail *English*
Kappa Alpha Theta, Class Officer, ASG, Chapel Choir, Singers.

COMFORT, Ronald *Political Science, History*
Alpha Chi Rho, Intramurals.

COMMONS, George *Chemistry*
Theta Chi, AUC, Student Counselor, ROTC Band, Intramurals, Arnold Air, Chemii, Alden Scholar.

CORCORAN, Judith *Elementary Education*
Alpha Chi Omega, Cultural Affairs Committee, J.A., WAA, AWS, Outing Club, Alden Scholar, Pi Gamma Mu, Kappa Delta Epsilon.

CORL, Joyce *Psychology*
Alpha Gamma Delta, AWS, J.A., WAA, Campus, Orchesis.

CRILL, John *English*
Phi Delta Theta, President; Student Counselor, AUC, CU, IFC, Debate Squad, Who's Who.

CZECH, Stanley *Biology*
AUC, CU, Campus, Arnold Air, 623 Club.

DARLINGTON, Karen *Elementary Education*
AWS, Judicial President; WAA, French Club, Who's Who, Pi Delta Epsilon, WARC, CU, Chapel Choir, Fund Drive.

DASHEM, Linda *International Studies*
AWS, WAA, Campus, CU, Outing Club, German Club, Junior Year Abroad.

DE CLERCK, Robert *Pre-Engineering*
Alden Scholar, Newman Club.

DE LANCEY, Charlotte *Economics*
Wesley Fellowship, Economics Assistantship, Psychology Club.

DE MARINO, Sandra *Political Science*
Alpha Chi Omega, Cwens, Student Counselor, ASG Vice President, International Affairs Committee, Alden Scholar, Pi Gamma Mu, Campus.

DOLDE, William *History*
Phi Kappa Psi, President; IFC, Football, Intermurals, ROTC, Block A. ASG.

DRUCKER, Henry *Philosophy*
ASG, President; CU, Independent President, Pi Delta Epsilon, Alden Scholar, WARC.

EBKEN, Richard *Pre-Medicine*
CU, Soccer, Track, ROTC Band, Kaldron, Alden Scholar.

EDWARDS, Robert *Pre-medicine*
Phi Delta Theta, Swimming, Track, Cross Country, CU, Singers.

FAIR, June *Sociology*
CU, AWS, Chapel Choir, Debate Squad, ACA, Philo-Franklin, Pi Gamma Mu, Socrates Club, German Club, Wesley Fellowship, SPU.

FELLOWS, Paul *English*
Sigma Alpha Epsilon, IFC, CU, Campus.

FERGUSON, Onnolee *Elementary Education*
Alpha Gamma Delta, AWS, CU.

FETCKO, Carol *English*
Alpha Chi Omega, President; Publications Board, Kaldron Editor, Pi Delta Epsilon, Angels, French Club.

FRANKLIN, Jeffrey *Sociology*
Kappa Sigma, Singers, Playshop.

FREELAND, Russell *Psychology*
Theta Chi, CU, Singers.

FROST, Marilyn *Elementary Education*
Alpha Gamma Delta, CU, AWS, J.A., WAA, Angels, Kappa Delta Epsilon.

FLOUNDERS, Margaret *Biology*
Alpha Gamma Delta, CU, AWS, Chapel Choir, Singers, Playshop, French Club, Alden Scholar.

FOWLER, Richard *Psychology*
Phi Delta Theta, CU, Track, Singers.

FUHRER, Dorothy *Psychology*
WARC, Psychology Club.

GAPE, Jeannette *History*

GAROMON, Ruth Ann *French*
Cwens, ASG, Junior year abroad, Language Lab Assistant, French Club.

GAUS, Clifton *Pre-Medicine*
Chemii.

GILL, Timothy *Mathematics*
Phi Kappa Psi, AUC, CU, IFC, Tennis, Intramurals, Arnold Air, Campus.

GILBERT, Larry *Pre-Medicine*
Baseball, Basketball, Alden Scholar.

GILBERTY, Janice *Elementary Education*
Alpha Chi Omega, AWS, CU, Student Activities Committee, Fund Drive, Chapel Choir, Kaldron Editor, French Club, Outing Club, Kappa Delta Epsilon, Pi Delta Epsilon.

GILLILAND, Catherine Annette *History*
Alpha Xi Delta, AWS, Kaldron, Chapel Choir, Campus, Pi Delta Epsilon.

GILKEY, Claudia *Mathematics*
Alpha Gamma Delta, AWS, Kaldron, CU.

GIVLER, Theodore *Psychology*
Phi Kappa Psi, Track, Intramurals, Arnold Air Society, Campus.

GLENN, Mary Lee *History*
ACA, Playshop, Pi Gamma Mu, German Club, WARC, Alden Scholar, College Bowl.

GRAHAM, David B. *Chemistry*
Alpha Chi Rho, Student Counselor, ASG, Constitution Committee, Student Academic Committee; AUC, College Court, Wesley Fellowship, Chem Lab Instructor, Student Chaperone.

GREENE, Norman *History*
CU, ROTC, Campus, Debate Squad, Philo-Franklin, Pi Delta Epsilon, WARC.

GRIFFEN, Nancy *English*
Kappa Kappa Gamma, AWS, WAA, Cheerleader, Orchesis, May Queen.

GRODSKY, Sue *English*
CU, AWS, Campus, French Club, Thoburn Club, Socrates Club.

GRUBB, Lynne *Elementary Education*
Alpha Chi Omega, Majorette, Public Events Committee, Chapel Choir, Singers, Alden Scholar, Outing Club, Kappa Delta Epsilon.

GOODRIDGE, Dawn *French*
Alpha Xi Delta, French Club, Outing Club, Pan-Hell.

GORDON, John *English*
Alpha Chi Rho, Literary Magazine, WARC, Thoburn Club, Admissions Guide.

GOTTLIEB, Diane *Sociology*
Alpha Gamma Delta, CU, AWS, Newman Club, WARC.

GUENTER, Gail *German*
CU, AWS, WAA, German Club, Alden Scholar, WARC, Young Republicans.

GUSTAVSON, Sandra *Psychology*
AWS, WAA, Chapel Choir, Singers, Playshop.

GUTHRIE, Jill *English*
Kappa Alpha Theta, ASG, AWS, Class Officer, Alden Scholar, Kappa Delta Epsilon, Chapel Choir, Singers.

HAGSTROM, John *Economics*
Phi Gamma Delta.

HALLAS, Nancy G. *Philosophy*
AWS, WAA, Chapel Choir, Singers, Campus, Socrates Club, Thoburn Club, French Club.

HARTLEY, Lynn *History*
Phi Gamma Delta, Student counselor, Football, Wrestling, Singers, Block "A" President.

HARVEY, Ann *Elementary Education*
Alpha Gamma Delta, AWS, Junior Advisor, Chapel Choir, Singers, Alden Scholar, Kappa Delta Epsilon.

HENDRICKS, Susan *Economics*
Alpha Chi Omega, CU Board, AWS, Angels, Campus.

HICKERNELL, Gary *Chemistry*
Intramurals ROTC, Chemii, Alden Scholar.

HIRSCH, Anita *French*
Alpha Xi Delta, ASG, AWS, Chapel Choir, French Club, Campus.

HOEHN, Robert *Political Science*
Phi Kappa Psi, Football, Young Republican.

HOERNER, Ruth *French*
Kappa Alpha Theta, AWS, Treasurer; Senior Court, Cwens, Student Counselor, Campus, French Club, Kappa Delta Epsilon, Chapel Choir, Singers, Language lab instructor.

HOLT, Peter *Psychology*
Sigma Alpha Epsilon, Soccer, Swimming, Intramurals, Arnold Air Society, Alden Scholar, Psychology Club.

HOUGH, Lana *English*
Kappa Kappa Gamma, AWS, President; AUC, Pan-Hellenic Council, WAA, Kappa Delta Epsilon, Alden Scholar, Freshman Charm Queen.

HOWE, Herbert *Psychology*
Alpha Chi Rho, CU Board, ROTC Band, Debate Squad, Philo-Franklin, Psychology Club, Merit Scholarship.

HOWK, Frederic *Geology*
Alpha Chi Rho, Geology Club.

HUCH, Roberta *Spanish-El. Ed.*
Alpha Gamma Delta, CU, AWS, Kappa Delta Epsilon, Orchesis, Junior Year Abroad.

HUTTON, Howard *Economics*
Phi Kappa Psi, AUC, CU, Basketball, Intermurals, ROTC, Kaldron, Playshop, Phi Delta Epsilon, ASG Outing Club.

JACKSON, George *Pre-medicine*
Delta Tau Delta, Vice President; Student Counselor, Judiciary Court, Fund Drive, Inter-Fraternity Council, Intramurals, Alden Scholar.

JAMISON, Thomas *Pre-medicine*
Alpha Chi Rho, ASG, Elections Chairman Fund Drive, Alden Scholar, Chapel Usher.

JANIK, Mary Ann *English*
Alpha Chi Omega, Cwens, Junior Advisor, Alden Scholar, French Club, Kappa Delta Epsilon, Phi Gamma Mu.

JOHANNESMEYER, John *Math*

JOHE, David *Geology*
Air Society, Outing Club.

JOHNSON, Neal *Pre-dentistry*
Phi Kappa Psi, Baseball, Intramurals, ROTC.

JOHNSTON, Robert *Political Science*
Sigma Alpha Epsilon, President; AUC, CU, Class President, IFC, Wrestling, Intramurals.

KEEDY, Caroline *Psychology*
Kappa Alpha Theta, ASG, AWS, Psychology Club, Pi Gamma Mu, Alden Scholar.

KELLER, Karen *English*
Young Republicans, Campus, French Club, AWS, Fund Drive, CU Staff.

KELLEGREN, Sandra *Political Science*
Alpha Gamma Delta, Chapel Choir, Singers.

KLAUSE, Klaus *Math*
Phi Gamma Delta, CU, AUC, Golf, Track, Arnold Air Society, Playshop.

KLEIN, Roger *Political Science*
Phi Gamma Delta.

KLOSKE, Emil *Math*
Alpha Chi Rho, Arnold Air Society, Newman Club, President; Language Lab Instructor, Kaldron, Philo-Franklin.

KNAPP, Albert *Political Science*
Theta Chi, Track, CU.

KOERNER, Theresa *Biology*
Kappa Kappa Gamma, AWS, Junior Advisor, CU, Gatorettes.

KOESLING, Frederick *History*
Phi Delta Theta, AUC, CU, Class President, Debate Squad, Playshop, Philo-Franklin, WARC, Pi Delta Epsilon.

KOVEL, Edith *Psychology*
AWS, Student Academic Committee, Kaldron, Newman Club, Psychology Club, Pi Delta Epsilon, Alden Scholar, WARC.

KUCHTA, Karen *Spanish*
Cheerleader, WAA, Orchesis, Angels.

LANE, Karen *History*
Pi Gamma Mu, Coffee House, Deans List, WARC, Literary Magazine.

LENZ, Marilyn *English*
Alpha Gamma Delta, President; AWS,
Junior Advisor, Campus, Kappa Delta
Epsilon.

LEVY, Sanford *Pre-medicine—Chemistry*
Theta Chi, CU, Class President, IFC,
Intramurals, Campus, Who's Who. Stu-
dent Counselor.

LINDSAY, Martha Jane *Elementary Education*
Kappa Alpha Theta, President; J.A.,
AWS Scholarship, Ballenger Prize, Ad-
missions.

LYONS, Winnifred *Spanish*
Kappa Alpha Theta, CU Board, Fund
Drive, WAA, Kappa Delta Epsilon,
AWS.

MAECHTLEN, Stephen *History*
Theta Chi, Intramurals, Arnold Air Soci-
ety.

MAHAFFEY, Raymond *Physics*
Sigma Alpha Epsilon, Basketball, Intra-
murals, Playshop.

MARKLEY, Michael *Pre-medicine*
Theta Chi, Variety Show Chairman.

MARQUIS, James *History*
Phi Kappa Psi, Baseball, Basketball, In-
termurals, Arnold Air Society, Block
"A".

MASON, Mary Sue *Elementary Education*
Alpha Chi Omega, Foreign Students
Committee, ASG, Junior Class Officer,
Variety Show Chairman; WAA, Kappa
Delta Epsilon, Playshop.

MASON, Susan *History*
AWS, CU Staff.

MATHERS, Robert *Economics*
Sigma Alpha Epsilon, Arnold Air
Society, Intramurals Singers.

MATHIS, Henry A. S. *Political Science*
Sigma Alpha Epsilon, Football, Activities
Committee, Poli Sci Assistantship, Fund
Drive Committee, Washington Semester,
Debate Team, Variety Show, Kaldron,
Intermurals.

MATSON, Joseph *Sociology*
Delta Tau Delta, President; Inter-frater-
nity Council, Intramurals, ROTC.

MC AFEE, William *History*
Theta Chi, AUC, Intramurals, Kaldron,
Pi Delta Epsilon.

MC CALLISTER, Jo Ann *Elementary Education*
Kappa Alpha Theta, CU Board, Cwens,
Student Counselor, AWS, Alden Scholar,
Honor Committee, Playshop, Campus,
Kappa Delta Epsilon, French Club.

MC CANN, Harold *Sociology—Math*
Swimming, Intramurals, Debate Squad,
Philo-Franklin, Alden Scholar.

MC CARTNEY, David *Math*
Phi Kappa Psi, AUC, CU, Baseball, In-
termurals, Singers, ROTC, Debate Squad,
Playshop, Philo-Franklin.

MC CAULEY, Henry *Political Science—History*
Phi Gamma Delta, Soccer—all PAC,
Arnold Air Society, Fund Drive Commit-
tee.

MC ELROY, Nancy *Art*
AWS, CU Staff, WAA, Chapel Choir,
Kappa Delta Epsilon, Thoburn Club,
Literary Magazine.

MC KEON, Diana *Psychology*
Alpha Gamma Delta, CU, WAA, Kal-
dron, French Club, Orchestis, Psychology
Club, Alden Scholar.

MC MURRAY, Barbara *English*
Kappa Alpha Theta, Kaldron, Campus,
Registration.

MC TIGHE, Shelia *English*
WAA, Library, Outing Club.

MEADOWCROFT, James *Pre-medicine*
Phi Delta Theta, Student Counselor,
AUC, CU, Track, Singers, Alden Scholar.

MEYERS, Chester *Sociology*
Sigma Alpha Epsilon, CU, Student
Counselor Intramurals, Singers, Alden
Scholar Pi Gamma Mu, Thoburn Club,
Outing Club.

MITCHELL, Bette *Sociology*
Alpha Xi Delta, President; CU Staff,
AWS, Kaldron, Young Republicans.

MOMEYER, Richard *Philosophy*
AOC, CU, ROTC, Campus, Debate
Squad, ACA, Philo-Franklin, Thoburn
Club, Fisk Exchange Student.

MOORE, Krispen *History*
Alpha Xi Delta, AWS, WAA, Kaldron,
Kappa Delta Epsilon, Pi Gamma Mu,
Alden Scholar, College Bowl Team.

MORISON, John *Sociology*
Phi Kappa Psi, President; AUC, CU, In-
ter-fraternity Council, Basketball, Tennis,
Intramurals ROTC Drill Team, Outing
Club.

MOURY, Caroline *Math—Sec. Education*
WAA, AWS, Playshop, Chapel Choir,
Dean's List.

MOWRY, Norman *Pre-medicine—Biology*
Phi Gamma Delta, Student Counselor,
CU, Sinfonietta, Alden Scholar.

MURRAY, Linda *Elementary Education*
Kappa Kappa Gamma, AWS, WAA.

NICHOLS, Sara *Biology—Chemistry*
Kappa Kappa Gamma (President), CU,
AWS, Campus, Angels.

NOGI, Leslie *Elementary Ed.—Speech Therapy*
Alpha Gamma Delta, AWS, WAA,
Chapel Choir, Singers, Campus, Kaldron,
Kappa Delta Epsilon.

PAISLEY, Suzanne *Chemistry*
Alpha Xi Delta, AWS, Newman Club,
Chemistry lab instructor, Chemii, Alden
Scholar.

PARENTI, Elizabeth *Spanish*
Kappa Kappa Gamma, AWS, WAA,
Newman Club, Phi Beta Phi, Angels,
Spanish Club, Gatorettes.

PETTI, Marilyn *Elementary Education*
Alpha Gamma Delta, CU, WAA, Kappa
Delta Epsilon, Pi Delta Epsilon, WARC.

PEEL, Robert *Biology, Pre-Medicine*
Alden Scholar.

PLEASANTS, Carlyn *English*
AWS, WAA, Campus, Angels.

POTTER, Wentworth *Physics*
Alpha Chi Rho, Physics Lab Instructor,
NSF Research Project, Dean's List,
ROTC Band.

PRICE, Erma Jeanne *Modern Languages*
Alpha Xi Delta, WARC, AWS, Chapel
Choir, French Club, Kappa Delta Epsi-
lon, Dean's List.

PROTHEROE, Donald *Psychology*

QUINLAN, Kathleen *Elementary Education*
CU, AWS, WAA, French Club, Kappa
Delta Epsilon, Newman Club, ARC.

RABER, Jane *Elementary Education*
Kappa Alpha Theta, WAA, Pi Gamma
Mu, Dean's List.

REYNOLDS, Earl *Spanish*
Alpha Chi Rho, CU Board, Language
Lab Instructor, Dean's List, Student
Chaperone.

RIGGS, William *Sociology*
Campus, ACA, Thoburn Club, Socrates
Club, CU.

ROOD, Marybeth *English*
Kappa Alpha Theta, Junior Year Abroad,
Kappa Delta Epsilon, Chapel Choir,
Singers, Alden Scholar.

ROSENBERG, Jay *Pre-Medicine, Religion*
Alpha Chi Rho, Human Relations Com-
mittee, Cultural Affairs Committee, Pub-
lic Events Chairman, Biology Lab In-
structor.

ROTH, Peter *History*
Theta Chi President, CU, IFC.

RUBINOFF, Arthur *Political Science*
Sigma Alpha Epsilon, ASG, CAMPUS,
Pi Gamma Mu, Alden Scholar, Intra-
murals.

RUEHLE, William *Economics*
Phi Delta Theta.

RUPPEL, Mary Bea *International Studies*
AWS, CAMPUS, Playshop, French Club,
Coffee House.

SCHWARTZ, Peter *Sociology, Political Science*
CU, LITERARY MAGAZINE.

SCIZAK, Paula *Pre-Medicine, Chemistry*
Alpha Xi Delta, WAA, Chapel Choir,
Chemistry Lab Instructor, Dean's List,
Chemii.

SEMIAN, David *Pre-Medicine, Chemistry*
Sigma Alpha Epsilon, CU, ROTC Band,
Intramurals, Chemii.

SHAFER, Diane *English*
Kappa Kappa Gamma, AWS, WAA,
LITERARY MAGAZINE, Playshop,
Orchestis, Young Republicans.

SHAFFER, Richard *History*
Phi Delta Theta, Student Counselor,
Swimming, Arnold Air Society President.

SHORR, Diane *Mathematics*
Alpha Chi Omega, AWS, WAA, Kal-
dron, Chapel Choir.

SIGLER, Gretchen *English*
Alpha Gamma Delta, CU, AWS, WAA,
Sinfonietta, CAMPUS, Thoburn Club,
ASG.

SIMONTON, Stephen *Political Science*
Phi Gamma Delta, President; Football,
IFC, Arnold Air Society, Who's Who.

SKILES, Melinda *History*
CU.

SMITH, Bonnie *Elementary Education*
Kappa Kappa Gamma, AWS, Junior Ad-
visor, Cheerleader, WAA, Chapel Choir,
Kappa Delta Epsilon, Orchestis, Alden
Scholar.

SMITH, Linda *English*
WAA, Porter Prize, Chapel Choir, Sing-
ers, German Club, Edith Mead Osborne
Music Award.

SMITH, Randall *Mathematics*
Phi Delta Theta, Golf, Wrestling, Intra-
murals, Arnold Air Society.

SOWERS, Jerry *Pre-Medicine*
Sigma Alpha Epsilon, ASG, Intramurals.

SPALLER, Bruce *History*
Theta Chi, Debate Squad.

STANIER, Roger *Physics*
ROTC Band, Sinfonietta, Arnold Air So-
ciety, AUC.

STANLEY, Shelia *Sociology*
Alpha Xi Delta, CU Staff, Foreign Stu-
dents Committee, Senior Court, JA,
WAA, Alden Scholar, Socrates Club, Pi
Gamma Mu, Outing Club, Chapel Choir.

STEELE, Patricia *Spanish, Elementary Education*
Alpha Chi Omega, Orchestis, Kappa
Delta Epsilon, one term in Mexico.

STEELE, Susan *French*
Alpha Chi Omega, AWS, Junior Year
Abroad, Chapel Choir, Kappa Delta
Epsilon.

STONE, Kenneth *History*
Track, Soccer, ROTC Band, Arnold Air
Society, CU.

STRAUB, Daniel *Political Science*
Phi Delta Theta, CU, IFC, Track, Wres-
tling, Intramurals, Arnold Air Society.

SUDER, Robert W. *Physics*
Alden Scholar.

SULLIVAN, Barry *History*
Phi Delta Theta, AUC, CU, Track, In-
tramurals, Campus, Playshop.

TAYLOR, Ellen *English*
Alpha Gamma Delta, CU, Junior Ad-
visor, Pan-Hel WAA, Campus, Pi Delta
Epsilon, Alden Scholar.

TAYLOR, Terrell
CU, AWS, Wesley Fellowship, Allegheny
Ambassador to Nigeria.

TERHUNE, Gwendolyn *Psychology*
Alpha Xi Delta, WAA, Library, Outing
Club, Sinfonietta.

THOBURN, MARY *Elementary Education*
Alpha Gamma Delta, CU, AWS, WAA,
Chapel Choir, Singers, Sinfonietta,
French Club.

THOMAS, Harry *English*
Phi Gamma Delta.

THOMAS, Ronald *Chemistry*
Sigma Alpha Epsilon, CU, Intramurals,
Chemii.

THOMPSON, Brooke *Psychology*
Phi Delta Theta, ROTC Band, Psy-
chology Club.

THURMAN, Robin *French*
Kappa Alpha Theta, Cwens, WAA, Jun-
ior Year Abroad, Alden Scholar, French
Club.

TODARO, Carl *Pre-Medicine*
Delta Tau Delta, Student Traffic Com-
mittee, Intramurals Psychology Club,
ROTC.

TRASKOS, Judy *History*
Alpha Xi Delta, AWS, ASG, WAA,
Washington Semester, CU Staff.

TUPPER, Marshall *History*

URBAITIS, Beth *English*
CU, AWS, Fund Drive, Sinfonietta,
Campus, Pi Delta Epsilon.

VEGLIA, Eleanor *Political Science*
Alpha Chi Omega, AWS, ASG, Washing-
ton Semester, Pi Gamma Mu, French
Club, Alden Scholar.

VON ROCH, Robert *Political Science*
Basketball, Arnold Air Society.

WALLING, Joan *Elementary Education*
Alpha Chi Omega, ASG, AWS, Junior
Advisor, Angels, WARC, Kappa Delta
Epsilon.

WATKINS, Nancy *Humanities*
Alpha Gamma Delta, AUC, AWS, CAM-
PUS.

WATSON, Sally *Political Science*
Kappa Kappa Gamma, AWS, Cwens,
WAA, Campus, Alden Scholar, Junior
Year Abroad.

WATSON, Spencer *Psychology*

WAY, Lydia *Elementary Education, English*
AWS, Fund Drive, Chapel Choir, Play-
shop, Socrates Club.

WAY, Sally *Psychology*
Kappa Alpha Theta, AWS, WAA,
Chapel Choir.

WEBER, Richard *Pre-Medicine*
Phi Delta Theta, Student Counselor.

WEINSTEIN, Alan *Economics*
Alpha Chi Rho, Student Traffic Commit-
tee, WARC, Pi Delta Epsilon.

WERNER, Susan *Mathematics, Physics*
Kappa Kappa Gamma, AUC, CU, AWS,
WAA, Chapel Choir, Sinfonietta,
Chemii, Phi Beta Kappa, Who's Who.

WESTERLAND, Sherry *Secondary Education English*
Kappa, Kappa Gamma, AUC, CU,
AWS, Junior Advisor, Pan-Hel President,
WAA, Kappa Delta Epsilon, Alden
Scholar.

WILSON, Robert *Economics*
Theta Chi, Swimming, Cross Country,
Chemii.

WODZINSKI, Richard *Chemistry*
Chemii, Alden Scholar, Phi Beta Kappa.

WOLFRAM, Sue *Economics*
Alpha Gamma Delta, CU, WAA, Chapel
Choir, CAMPUS, KALDRON, Pi Delta
Epsilon, ASG Finance Committee.

YEAGER, Edward *Mathematics*
Theta Chi, Football, Wrestling, Arnold
Air Society.

YETTER, Marcia *Art Education*
Alpha Xi Delta, Coffee House, Dean's
List, Playshop, LITERARY MAGA-
ZINE.



258 Chestnut Street

Phone 37-481

For Tops in Pops

Call

PEPSI-COLA DISTRIBUTOR

PEPSI COLA—COTT'S—TEEM

KOHLMANN'S CHOCOLATE

158 Pine St.

Meadville, Pa.

Robert C. Davenport, Distr.

COMPLIMENTS OF
SPAULDING'S INC.

247 RACE STREET
MEADVILLE, PENNSYLVANIA



CARGO CLEANERS

Shirt Laundry

Drive-in Service

346 North St.

Corner Park Ave. & Poplar

Your "Community Hotel"

The David Mead
at MEADVILLE, PA.
A Treadway Inn

John F. Curtin, Jr., Innkeeper



**This Is The Place Where
Alleghenians Gather
For The**

*"Finest in Food, Lodging
and Drink"*

Private Rooms Also Available
For Reunion Dinners & Meetings



455 Chestnut Street
Tel: Meadville 41-201

MEAD INN

PARK AVE. AT BALDWIN ST.

COMMERCIAL RATES
MOTEL AND ROOMS

TELEPHONE 6-9064
MEADVILLE, PA.

LUCAS' SHIRT LAUNDRY

829 Market Street

Shirts & Bachelor Service



Center Bowl



featuring 12 AMF AUTOMATIC PINSPOTTERS

143 CENTER ST. • MEADVILLE, PA.

TEL. No. 36-313

Commercial Printing of ALL Kinds

**MEADVILLE
PRINTCRAFT
CORPORATION**

1000
Market Street

Meadville, Pa.



Fugagli's Willow Tavern

Corner of Willow & Market

Phone: 36-373

We serve the best spaghetti in Meadville



Talon THE QUALITY ZIPPER
MADE IN U.S.A.



Colonel Lewis Walker's 1894 shoes, equipped with the forerunner of the smooth, trim Talon zipper we know today, took a beating before the Colonel and his associates were able to achieve a design, machinery, and financing for the new closure. Even after the present scoop design was developed in 1913 study and research continued, and continues today. The search for better materials and better ways to make a better product is one job Talon, Inc. never finishes. Like education, it is a process that never ends. Talon, Inc. Meadville, Pennsylvania.

TNT Exterminating Co.

PEST CONTROL SPECIALISTS

Offering a Complete Line

Sales
 Wholesale
 Retail



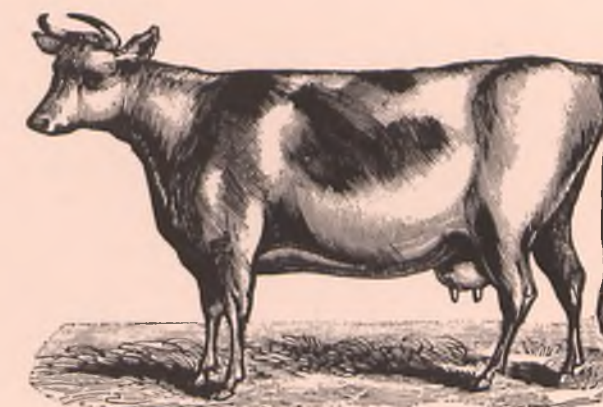
Services
 Individual
 Industrial



Inspections
 Advising
 Pricing



109 North Main
 Akron 8, Ohio
 JE 5-6411-5-3251



Compliments of
Meadow Brook Dairy
 Baldwin Street Ext.
 Phone 2-1651

store hours:
 Monday, Tuesday, Wednesday,
 Thursday and Saturday
 9 am to 6 pm
 Friday 9am to 9 pm

Erie Steel Products Co.

Construction Products of Steel



world leader in complete vending
 and background music service

**Erie-Canteen
 Company**

4801 Peach Street
 Erie, Pennsylvania
 UNion 4-3038

Seelar and Company

Elevators
 Construction, Repairs & Maintenance
 306-307 Marine Bank Building
 Erie, Pennsylvania 16501
 GLendale 3-6591

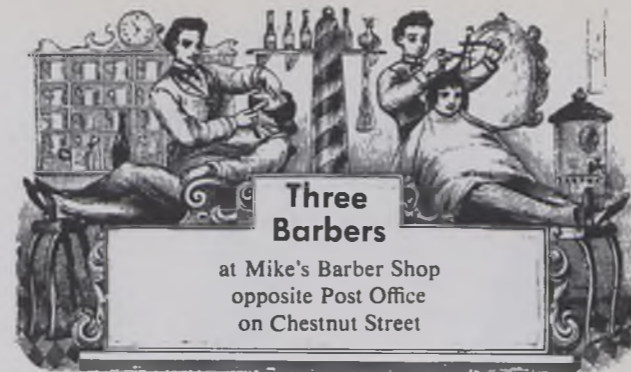


Brown-Jones

Prescription
 Drug Store
 celebrating
 their 40th year
 in Meadville

Chestnut and Market Streets

Keystone
SANITARY SUPPLY COMPANY
"Everything For Building Maintenance"
 CATERING PRINCIPALLY TO SCHOOLS AND INSTITUTIONS
 110-112 DEPOT STREET
 GREENSBURG, PENNSYLVANIA



Three Barbers
 at Mike's Barber Shop
 opposite Post Office
 on Chestnut Street



C. A. Curtze Co.
 Institutional Food Distributors
 Erie, Pa. N.I.F.D.A.

BEN & FRAN MOORES'
Wagon Wheel
MOTEL
 Intersection Rts. 322, 19, 6 & 98
 R.D. 4 — 3 Miles West of Meadville, Pa.
 Conneaut Lake Road

Phone 4-4259



Compliments of

John J. Shyroch Co.

Crawford County's
 Largest and Most Complete
 Home Furnisher



Dean's Jewelry

DISTINCTIVE JEWELRY AND
 GIFTS
 252 Chestnut Street
 Meadville, Pa.



Eckerd Drug Stores

262 Chestnut Street
 South Park Avenue Plaza
 We Give "S&H" Green Stamps



Compliments
 of

The Tip-Top Bakers

Suddenly it's up to you!

Commencement puts you right on the threshold of an exciting new phase of your life. Now it is up to you to use wisely the knowledge gained in the past years in selecting your career. Actually there has never been a more exciting time to enter the world of business or advanced education. Now, more than ever before, America's continued growth depends on young people like you

for the new ideas we need to maintain our leadership in the world. Right in your own community, American Viscose is planning for this very exciting future and we hope that it may be possible for you to join us in making it a wonderful reality. But whatever your endeavor, we hope your dreams of today will come true tomorrow. Good luck!



AMERICAN VISCOSE DIVISION

Meadville, Pennsylvania

LOEFFLER'S FLOWER SHOP

Accessories to Gracious Living

Corsages - Wedding Bouquets
Funeral Arrangements

207 Chestnut Street
Phone: 27-981



Yours for . . .

Hardware

Housewares

Photo Supplies

Sporting Goods

Compliments
of

WMGW

AM and FM

1490 on your RADIO DIAL



PAT AND PETE'S SHOPPING CENTER

North Main at Baldwin

Full line of Drugs, Produce, Groceries and Meats



BOB'S HOME RADIO

Magnavox Stereo Phonographs
and TV

Wurlitzer Pianos and Organs
G-E Appliances

283 CHESTNUT ST.

MA'S SPAGHETTI HOUSE

Italian Style Fried Chicken
Choice Steaks
Spaghetti
Tangy Hot Pizza
All Legal Beverages

Catering to Private Parties

Phone: 50-251

356 BALDWIN STREET

University Shop For Nationally Known Brands



STANTON-RAND STUDIO

Portraits are precious beyond price

843 Market Street

Phone: 32-903



RACE STREET LUMBER, INC.

Lumber and building materials

245 Race Street Phone: 44-223

Meadville

GELVIN-JACKSON and STARR

*Over 100 Years Insurance Service
in Meadville*



Over 30 Years Going

To The Dogs



DAD'S DOG FOOD

Mill and Clay Streets
Meadville, Pa.

N/W Bank Bldg.

Meadville, Pa.



Compliments of
STEERE DAIRY, INC.

Carl's BARBER SHOP

NEXT TO BUS STATION ON PARK AVENUE

Call for Appointment
Ph. 2-5882

SPECIALIZING IN ALL HAIR STYLING



GUIDO'S MASTER TAILOR

Ladies & Gents Alterations

Tailormade Suits

875 Water St.
Meadville

Phone
61-071



ART'S RESTAURANT

Kentucky Fried Chicken
Fresh Fruit Punch
Catering service

Park Avenue
Meadville 25023

Open Sundays

1 HOUR MARTINIZING

Dial 59113

899 Market Street

Meadville, Pa.

Meadville Bowling Lanes

F. MITCHELL, PROP.
YOU ARE ALWAYS WELCOME TO BOWL
AT OUR LANES

PHONE 69-901

887 WATER STREET
MEADVILLE, PA.

Watches **WILLIAM H. CLOUGH** Diamonds

JEWELRY

"Repair is our business"

957 Market St.



WIRT'S

Complete Drug Needs

Two Stores

245 Chestnut St.

816 N. Main St.

Meadville, Pa.

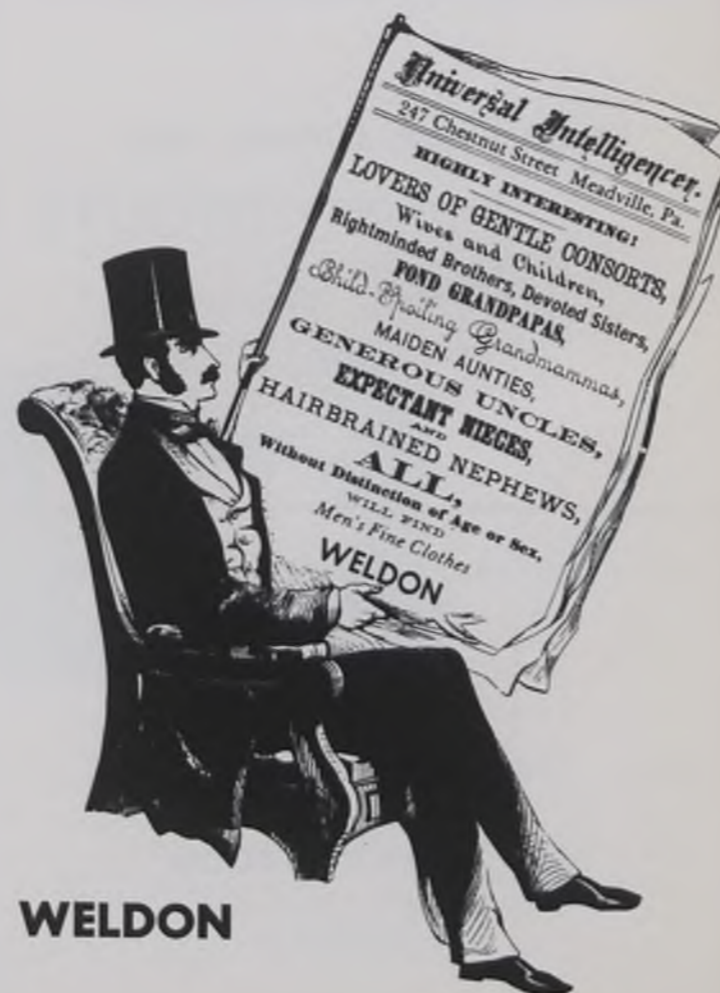


For Fine Food Stop At
**JOHNNIE'S DRIVE-IN OR
THE COLLEGE GRILL**

Johnnie's has year-round curb service, carry out orders, chicken and shrimp in the basket, toasted hoagies, and a variety of sandwiches.

The Grill has breakfast, lunches, dinners, and an all-day and evening soda bar.

Johnnie's—825 Washington; phone Md. 37371
The College Grill—Lower Level, Cochran Hall



WELDON

Good-bye and Good Luck from

BILL

at the

RED & WHITE



LINCOLN MARKET

Quality Meats, Groceries, Produce

Wholesale and Retail

Erie, Pa.

BEACON INN

Home of Fine Food

Intersection Routes 6 - 19 - 96

Paul F. Moeller, Mgr.





Coca-Cola Bottling Co.

MEADVILLE, PA.

STATESIDE

Coin-Operated
Dry Cleaning-Laundry
Center

521 State St. Meadville, Pa.

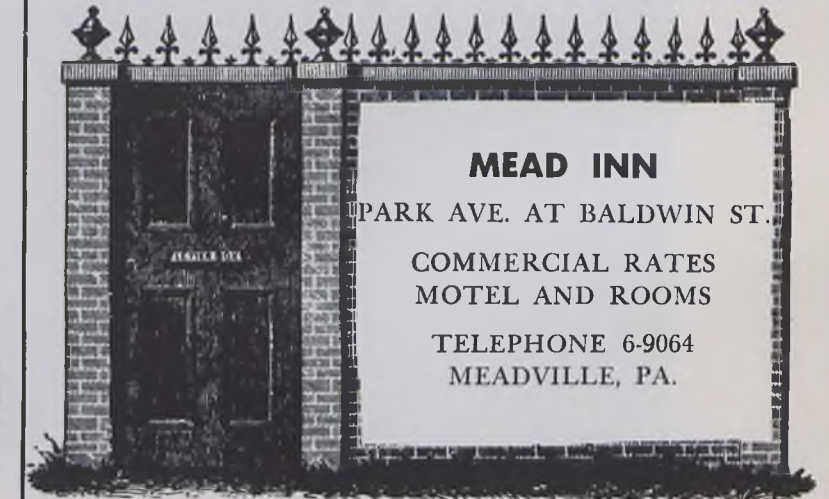
GOOD LUCK
from

M & M RESTAURANT

Dial 19461 956 Water Street
Meadville, Pennsylvania

ACADEMY THEATER

275 Chestnut Street
Meadville, Pa.



MEAD INN

PARK AVE. AT BALDWIN ST.
COMMERCIAL RATES
MOTEL AND ROOMS
TELEPHONE 6-9064
MEADVILLE, PA.

CONGRATULATIONS and BEST WISHES
to the
1964 ALLEGHENY GRADS

FROM
**CHASE LAUNDRY, DRY CLEANING
AND
LINEN SUPPLY**

CARGO CLEANERS

Shirt Laundry

Drive-in Service

346 North St.

Corner Park Ave. & Poplar

RACE STREET LUMBER, INC.

Lumber and building materials

245 Race Street Phone:44-223

Meadville





Best Wishes Class of '64
from
American Brake Shoe



MEADVILLE CITY LINES

Charter Service

Phone 3-7822



BRUNNER'S RESTAURANT

Tasty Home Cooked Food



HAYES NEWSSTAND

870 Water Street



THE HOUSE OF MUSIC



**JACK'S
PHARMACY**

PRESCRIPTIONS CAREFULLY COMPOUNDED.

Prescription Specialists

Drug Sundries

Soda Fountain

285 Chestnut Street

Meadville, Pa.

Phone: 28-551

Private Bath, Radio, Telephone

and Air Conditioning

Restaurant and Cocktail Lounge

RO-HO-CHO MOTEL

47 Rooms

3 Miles West of Meadville, Pa.

On Routes 322 and 6

Shuffleboard—Swimming Pool

Miniature Golf

T.V. in all Rooms

Phone: 41-219 for Reservations



**GREEN AND DePHILIP
PHARMACY**

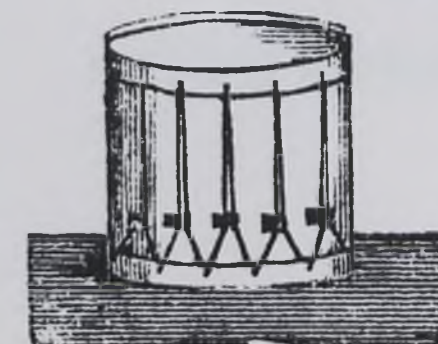


**THE
SPUDNUT
SHOP**

America's Finest
Food Confection

Special Party Rates

285 North Street
Phone 5-7181



Congratulations From
VENANGO FEDERAL
932 Diamond Park



THE COLLEGE BOOK STORE

Text books, of course, and in addition a fine selection of the best in current and classic literature. Sporting goods, sports apparel, toiletries, stationery, novelties, art materials—in short a complete “general store” for the college community. Lower level, Cochran Hall.

PHI DELTA THETA

KAPPA KAPPA GAMMA

SIGMA ALPHA EPSILON

ALPHA CHI OMEGA

KAPPA ALPHA THETA

PHI KAPPA PSI

PHI GAMMA DELTA

THETA CHI

ALPHA CHI RHO

ALPHA XI DELTA

ALPHA GAMMA DELTA

DELTA TAU DELTA



In 1989 . . .

. . . when the KALDRON celebrates its centennial, what will we be? What will we do with our twenty-five years of service, we the strength and future, the productive generation?

Will we fight the war against tyranny, corruption, and prejudice; against poverty, disease, and ignorance? What will we do to develop and utilize the world's creative minds: Intelligence, not yellow metal, is the gold standard of the future. Freedom is the opportunity to know what is true. Will we hold in higher esteem those who think alike, or those who think differently?

What will be important to us then, 5 years after 1984 . . .

Can we be satisfied with complacency? Will we squander our lives working for fame or money or security? Or for the excitement that comes from achieving the difficult, or attempting the impossible?

Can we dare overreach, and fall short; and lose everything but the willingness to take the chance again? . . .

This is not a time for little men.

Janice Giliberty
Editor