



KALDRON



1948

The Kaldron

1948



Introduction

How closely have we observed the seasons of our scholastic year? Fall, Winter, and Spring. From the first leaf that reddens and drops in the fall until the harbingers of the summer flowers poke sleepy heads up in the spring we are constantly awed at nature with its continuity of beauty and proportion.

Perhaps we could take a few lessons from the Allegheny seasons. Perhaps we could strive to attain the beauty and perfection of its activity in respect to bettering our individual mortal characters.

We cannot openly ridicule Joyce Kilmer and his concept that "Only God can make a tree;" but we can imitate to the extent of holding ourselves as erect, and as its branches serve as a support for life giving leaves, perhaps our conduct could be developed as a support for the ethics of the present age.

Whether we are advocates of Rousseau and the "Back to nature" movement or not, we can never completely divorce ourselves from the seasons and their effect on our lives. It's their handiwork that covers our football field with a carpet of green grass and snow flurries in the fall, provides the slides for skiing and tobaggon rides around Bousson in the winter, and warms the surrounding waters for swimming in the spring and early summer.

VIS MEDICATRIX NATURAE

filiz



In Memoriam

JOHN RICHIE SCHULTZ

December 12, 1884—August 11, 1947

PROFESSOR OF ENGLISH 1917—1943

DEAN OF MEN 1930—1943

PRESIDENT 1942—1947

An inscription for a college annual is something which is expected, accepted, and passed on, usually perfunctorily and without much more than momentary enthusiasm. But our Kaldron of 1948 is dedicated, not to a man or an ideal, but to the memory of a man and his ideals, about which there was nothing perfunctory or temporary.

John Richie Schultz was, and is, Allegheny. Those of us who knew him as a person could rarely venture forth without seeing him making his way about the campus he loved, lived for, and administered so ably; stopping for chats with faculty and students as he went, or exchanging warm greetings with all whom he happened to meet. He directed Allegheny's affairs from along the Senior Walk as ably as he did from his office in Bentley.

He was associated with Allegheny College for thirty years; an immensely popular professor and Dean of Men, he soon became such a part of this institution that he was called upon to take over its presidency, a fitting climax to such a long period of service.

Today, just as yesterday, his presence and influence are felt tangibly and certainly. No-one could ask for a more perfect monument. He is regarded, still, as the embodiment of the qualities which Allegheny seeks to develop in its sons and daughters. To those who did not have the opportunity of knowing him, this is amazing; to those who did, it is perfectly understandable.

Sooner or later, everyone who is an Allegheny student will come to know him; for his ideals have become a distinct part of our curriculum, just as much as English or Mathematics or History. It is, therefore, only fitting that the Kaldron of 1948, which more than anything else is supposed to reflect and preserve the memories of but one of our years here, should be dedicated to one who left such a distinct heritage for our emulation and use.



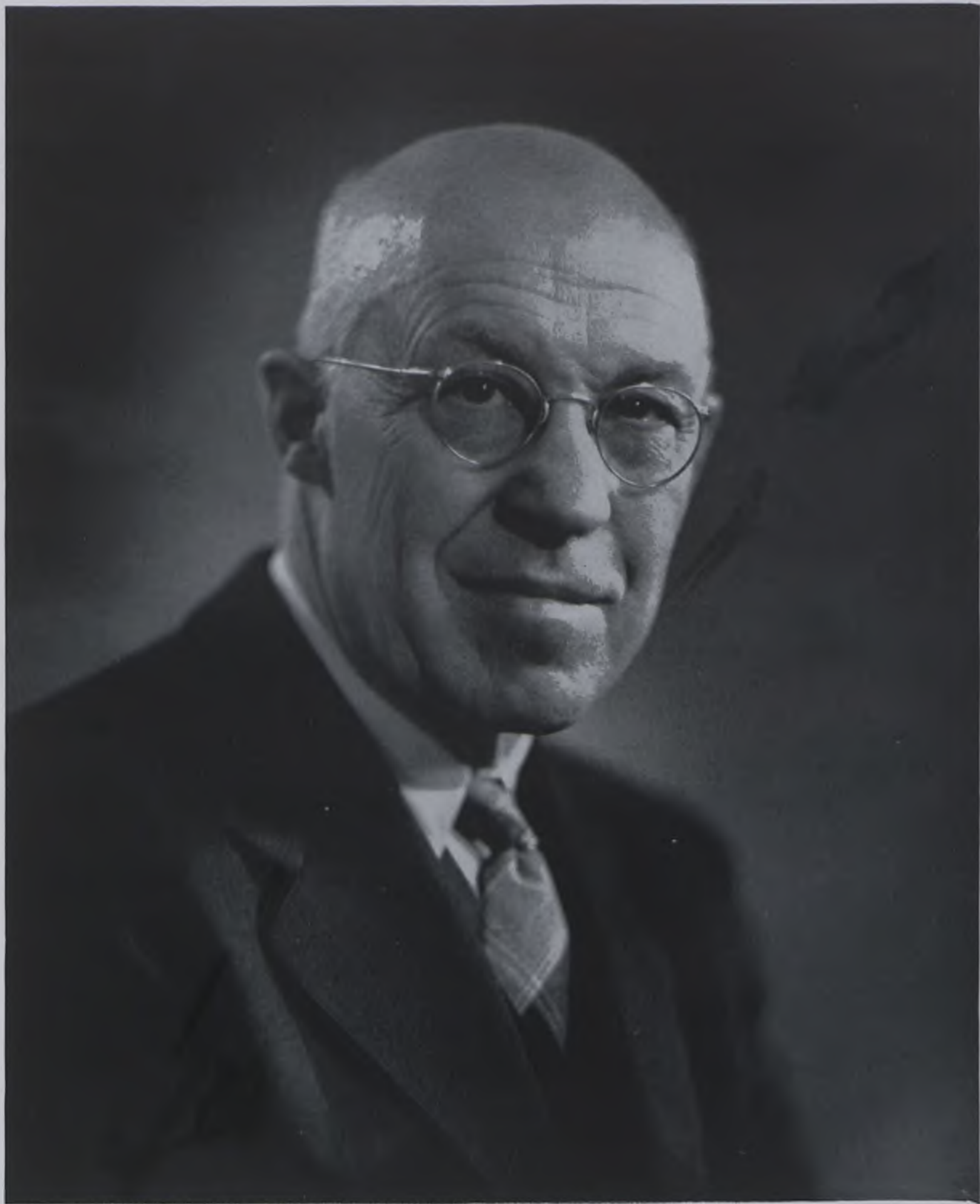
*DR. SCHULTZ, AS DEAN OF
MEN, WITH CARL SANDBERG*



*THE PRESIDENT, AT HIS OF-
FICE DESK*



INAUGURATION SCENE — OCTOBER 16, 1943.



Dr. Darling

With the untimely passing of Dr. Schultz last summer Allegheny College found itself face to face with a grave situation. The so called educational galleon, Allegheny, was on the high seas of the perpetual academic voyage without a skipper at the helm. We needed a man on the bridge and a good man! It's a well established fact that college presidents aren't plucked off nearby trees when the supply becomes exhausted. What was to be done? The answer to this 100 horse power question came in the person of Dr. Chester A. Darling. The college trustees felt reasonably sure that if anyone could serve Allegheny during an emergency period it would be Dr. Darling. They were never more exacting in their decisions. During his year as the chief executive his actions have generated and commanded the respect of the student body and administration.

He became a member of the Allegheny family in 1913 leaving Columbia University where he taught for seven years. He assumed the duties of professor of biology and geology, as well as curator of the college museum. Since that time his accomplishments have received considerable recognition in the world of science. A just monument to his teaching ability can be found in the careers of successful Allegheny graduates who trained under him before making names for themselves in the highly competitive scientific occupations.

A well traveled man, Dr. Darling mastered the capabilities of introducing what he had observed on the face of the globe in such a way that his classroom lectures have been described as a kaldron boiling over with a sound fluid of facts, humor and interest.

In the way of tribute from the most concrete source let us review the words of the late Dr. John Richie Schultz delivered before the college board of trustees in May 1947.

"Dr. Darling has caught the imagination of students and has inspired them to carry on their studies far beyond the limits of the classroom. An interesting teacher, he has held the affection and respect of all who attended his classes".



DEAN J. L. BOSTWICK

ADMINISTRATION

IVIN B. MOYER
MONA M. HEIL
L. J. LONG



AILEEN DAIN
HARVEY E. HERRING
JOHN MCFARLAND

STUDENT ADMINISTRATION



CLIFFORD SMOOT
GEORGE HENDERSON
CAROLYN HORNER



ROBERT LANDON
FRANCIS RICHMOND
HARRY MARSHALL



FIRST ROW: DEANNE BLYTH, MARILYN SCHREIBER
SECOND ROW: GERTRUDE WALTERS, JEANNE DAHLQUIST, RUTH JONES



SPEECH AND DRAMA

GLENN TIMMONS
GRAHAM BYRD
HUBERT V. CORDIER



LANGUAGE

FIRST ROW: MILDRED LUDWIG, L. R. MOESSNER, LILIAN HUMMER
SECOND ROW: ROBERT CRISPIN, BLAIR HANSON, AR-
MEN KALFAYAN

RELIGION

HORACE T. LAVELY



ENGLISH

JULIAN L. ROSS
C. B. WIBLE
STANLEY S. SWARTLEY
ERWIN MOONEY
FREDERICK F. SEELY



HISTORY and POLITICAL SCIENCE

HARRISON YOUNG
PAUL CARES
PAUL A. KNIGHTS
ALTON D. KIDD



LIBRARY

FIRST ROW: DOROTHY BRUSH, KATHRINE REYNOLDS, NORMA RICHARDS
SECOND ROW: F. COUGHLIN, PHILIP BENJAMIN, AGNES PAINTER



ECONOMICS AND SOCIOLOGY

FIRST ROW: LEE D. McCLEAN, JOHN McMAHAN
SECOND ROW: ALLEN B. EDWARDS, J. VANDER-
WATER, WILLIAM LAWTON, CHARLES NAYLOR



MATHEMATICS

E. STURLEY, W. U. HODGSON, FREDRICK STEEN



MUSIC

FIRST ROW: HERBERT NEURATH, SARA
HUTCHISON, HOWARD HATTON
SECOND ROW: MORTEN J. LUVAAS, ROBERT
JOHNSON



PSYCHOLOGY

John T. Bair, Agnes Kollitz, Guy Buckingham,
Charles Miller

ART

Carl Heuschen, Julius Miller, Vivian Kinsley





BIOLOGY

Albert Ogilvie
Robert Bugbee
William Parsons



CHEMISTRY

John E. Cavelti
Harold M. State
Herbert S. Rhinesmith
Martin Howes



PHYSICS

Arthur W. Hammond Richard L. Brown



PHYSICAL EDUCATION

Barbara Morse
Marjorie Kirk
Hope Ayrault



PHYSICAL EDUCATION

William C. Hanson
Alfred C. Werner
Robert M. Garbark
H. P. Way



Fall



- | | | |
|-------------------------|-----------------------|------------------------------|
| 1. We did it again | 9. Leaf us Frosh play | 17. On the dotted line |
| 2. Autumn arrives | 10. Finale | 18. Von Eisler's masterpiece |
| 3. Nothin' better to do | 11. Hot house | 19. Gators are heavy here |
| 4. Scratchy strategy | 12. The machine moves | 20. Pillars and Fantasy |
| 5. Symbolic Threshold | 13. Fall out | 21. Frosh revolt |
| 6. Shins up, men | 14. Serfs salute | 22. Batons and band |
| 7. Big locomotive | 15. Hike | 23. The new look |
| 8. Mural at Ranch-house | 16. Hurry up—and wait | |

*The above numbers correspond to those on the engravings

FRESHMEN

A hill to climb! Thus we have the sure inheritance of all Freshman classes. These young men and women have exhibited their interest in setting forth on an upward quest through the strata of established learning. They section off into climbing teams or fields of concentration and with a competent advisor as a guide and companion commence to scale the walls of intellectual achievement. They pass territory as they ascend that at one time was familiar to the world greats from Homer to Einstein.

Early in the expedition the students became aware of the fact that there is no set pattern for the methods that they must use in the rise up to the plateau where diplo-

mas are awarded. It's an individual proposition and the responsibility of the student to make sure that he digs his effort-hooks in at the right places.

That a different approach was needed in the initial steps of the climb was evidenced this year in the mass revolt against freshmen customs. Their opinion that dinks and name placards were an unnecessary evil was accepted by the student body. Their subsequent fine conduct and contributions throughout the year proved them to be not a rebellious group, but rather, young people with stable convictions and an eye firmly focused on the peaks in the distance, the peaks that demand four years of hard work, initiative and concentration.



FRESHMAN CLASS OFFICERS

Treasurer, R. Seibetta; Secretary, A. Perkins; President, R. Cook; V. President, E. Stidger



COCHRAN QUEENS

The Cochran Queens lived up to their reputation in sports as well as charm. Their peppy basketball teams added zest to the girls' intramurals, while famous Freshman smiles kept the wires buzzing. Tables reserved at the Grill—9-12 break, 2-5.

FRONT: J. Keffer, A. Perkins, C. Hunt
 BACK: J. Potts, P. Nichols, A. Allenberg, C. Miller
 STANDING: M. Linn, J. Klein



FRONT: B. Bounds, J. Sadler, D. McQuiston, S. Wayman
 BACK: M. Hunt, A. Roberts, M. Magahan, E. Schucht



FRONT: B. Massa, G. Owens, H. Crowell, E. Roher,
 STANDING: M. Renaud, J. Bockel, J. Young, P. Hummer

FRONT: M. Gillespie, M. Anderson
 BACK: C. Eysel, J. Phythyon, J. Hassel, J. Sparks, J. Schulmeister, C. Thomas
 STANDING: B. Woodard, M. Wade



ODD FELLOWS HOME

The "Phi Gam Annex", better known as the Odd Fellows Home, has housed some of the friendliest, most spirited girls on campus this year. Having combined their talents for inter-dorm sports, serenade answers, and parties, to augment their academic activities, these girls have become convinced that IOOF is definitely the "best location for coeducation".



ODD FELLOWS GIRLS
 A. Giesler, E. Townsend, N. Cornell, R. Slosser, K. Keck, J. Marsh, C. Sholle, A. French

BROOKS FRESHMAN

It was something new when Freshman women for the first time took up their living quarters on the fourth floor of Brooks. Between their tired gasps for air from climbing all those stairs many times a day, any one of the six girls could tell you that it was really quite an advantage to be able just to step downstairs to meals and dances. Quite often it was the result of their work that could be seen adorning the walls and tables at formal banquets and dances.



BACK ROW: N. Petritz, J. Newson, B. Stacy, J. Gregory, J. Vines
 FRONT ROW: J. Congdon, E. Rucks



BROOKS GIRLS
 N. Smith, M. Hayward, N. Luce, E. Stidger, V. Gooding, L. White



FIRST PICTURE

FIRST ROW: (l. to r.) E. Rhyner, V. L. Ohmler, P. Hobbs, E. Beecham, E. Camille

SECOND PICTURE

SECOND ROW: S. Thomas, P. Hockensmith, A. L. Pruden
FRONT: D. Schmidt, J. McCafferty, A. Williams

BEEBE

Keeping infirmary patients supplied with cards and gum was only part of Beebe's good will policy. Wedding bells chimed for one of them, as the first girl of the class of '51 was married.

Beebe's charm indeed came in small packages, for by the second semester only eleven girls remained. Despite the fact that skunks moved in for a wild serenade on election eve, and that harem costumes caused a few wrinkled brows, these girls have proved to all their ability to have fun and work hard on the campus.

TARBELL

The "Tarbell Twenty-Six" continued the traditions that have made the old house down the hill beloved by generations of Allegheny coeds: the annual dawn Christmas serenade at the jail—the prize-winning Hallowe'en skit—the bevy of sparkling beauties. With a finger in most of the campus activities, the girls have followed the example given them by the former "Belles".



BACK ROW: M. B. Montel, B. Arndt, E. Brown, S. Johnston, C. Heskamp

FRONT ROW: J. Bowman, J. Smith, F. Black, N. DeWald, N. Doncaster

SECOND PICTURE

BACK ROW: M. Taylor, G. Samzellius, E. Miller, J. Anderson, P. Swanson

FRONT ROW: C. Linsley, B. Lorz, B. Weybrew

TOWN GIRLS (FRESHMEN)

Closer contact between freshmen town girls and the campus activities was accomplished this year through the combined efforts of the girls concerned. The Freshman dance committee was the climax, when some of the girls really put themselves out to be a vital part of the class and its functions.



FRONT ROW: M. Miller, J. Ross, A. Deeb, E. Kennedy



BACK ROW: N. Pierce, C. Scribner

FRONT ROW: J. Beuchat, D. Ross

CAFLISCH MEN

With the very best of intentions, Caflisch '48 commenced the year with a series of social explosions. The Frosh led a potent force to the rapidly spreading "Dink Revolt", and proved undaunted even after several of their midst had been unceremoniously dipped into Lake George (Rustic Pond) by upperclassmen.



FRONT ROW: J. O'Roark, L. Clark, B. Bryden
SECOND ROW: B. Fulton, S. Cordier, D. Wolsk



FRONT ROW: H. Funk, T. Taylor
SECOND ROW: W. Grogan, G. Mulfinger, S. Brahm
BACK ROW: B. Welsh, B. Utberg, J. Rollinson



BACK ROW: D. Waterman, R. Neithamer, J. Hopper, D. Rupert
FRONT ROW: J. Waite, L. Moore



C. Hollerman, W. Bowlus, Z. Taylor, T. Hartung, J. Pond

In quick succession the boys thrilled the new coeds with their first serenade after their arrival to the Allegheny Campus. They were the last class to uphold the tradition of painting numerals on the now defunct Montgomery Field wall.

FRONT ROW: B. Roher, W. Strahl, J. Sheridan, D. Conrad
 BACK ROW: G. Trumppore, F. Lubich



In complete harmony with customs of the past they saw their homecoming bonfire wood disappear at the hands of the Sophomores only to rally with the whole school in the spirited snake dance that followed the pep rally.



S. Carlson, S. Lewis, E. Brink, C. Hoffman, J. Wald-fogle, J. Akin

C. June, R. Wilson, D. Price, E. Lafcan, F. McEwen, D. Clark.



Much to their elation the residents of Caffisch hall were presented with a lounge and ping pong room this year where bull sessions are recorded to have existed on a continual basis. Eyes were sharpened and accuracy at a premium during the winter snowball fights between the various sections.



J. Friedman, R. Coates, R. Cook, A. Drescher, P. Storing, R. Parker, J. Buchner, A. Krall



R. Campbell, G. Fryling, R. Topnick, R. Kramer, J. Matthews



BACK ROW: R. Falck, J. Howell, H. Schlitt
FRONT ROW: P. Klippgen, J. Brebner, L. Peterson

Depleted ranks in the football squad, track team, debate team, singers and several other campus organizations welcomed the competent contributions made by members of the class of 1951.

The never forgotten year that Freshmen males donate to the rooms and corridors of Caffisch hall seems to be composed of a mosaic of little things. Take the mass water fight, cheers for the girls on their way to the tennis courts, exchange dinners between Brooks and Cochran dining rooms, firecracker explosions during the study hours, shaving lotion fires and a thousand other on-the-spot happenings and you have produced a pattern that will forever take a place among the fond recollections of college.



BACK ROW: D. Barnes, P. Shroadcs, R. Zuberbuhler.
FRONT ROW: D. Simons, R. Spanard, D. Seibetta.



BACK ROW: B. Vaughan, D. Thoburn, J. Lewis.
FRONT ROW: D. Hileman, R. Little, L. Sanders.

SUBSTITUTION FOR ALLEGHENY



FOOTBALL

A vastly improved Gator squad opened the grid season against Oberlin at North Street Stadium. A pass interception by tackle Don Hamilton, hard running by Bill Rylander, Gator halfback, and a dash across the goal line to score by Bob Carman constitute the highlights of the day from the Allegheny standpoint.

Allegheny dominated the contest with Dickinson until the last ten minutes when the Red Devils were able to pick up 14 points and force a tie. Allegheny's first tally came in the second period when Baker and Ry-

lander moved the ball within scoring distance and Bob Carman dashed across for the T. D. Rylander's attempted conversion was successful. In the third period Frank Pollard stepped off a sizzling jaunt—38 yards—for the Gators' second T. D. and once again Bill Rylander's talented toe proved its merits. The Gators' hard charging line was an all important factor in stopping the fast stepping Red Devil backs.

The hard working Gators were rewarded with a victory in their third start at the expense of West-

minster. After a sluggish first quarter the Gators scored in the second period when a pass from Rylander to Pollard put the ball on the Titan 11 yard line. Carman dashed across to score on the following play. Westminster scored in the third period, but the Daddio combine retaliated immediately. A series of runs climaxed by a pass from Baker to Pollard accounted for the Hill-toppers second T. D.

Daddio's charges met more than their match in Grove City. The Grovers added several names to the

Gators' injury list and made the locals easy prey for Thiel and Mount Union in the following contests.

Allegheny 9—Oberlin	25
Allegheny 14—Dickinson	14
Allegheny 14—Westminster	7
Allegheny 7—Grove City	13
Allegheny 0—Thiel	20
Allegheny 6—Mount Union	20
Allegheny 7—Susquehanna	7

THE FOOTBALL SQUAD





On a rain-soaked turf the Gators went into action for the last time during the '47 season against Susquehanna, a team that was rated far superior to Allegheny. For two and a half quarters Allegheny held their opponents scoreless and then Norm Baker tossed a soggy pigskin to Dick Scibetta who raced 52 yards to score the Gators' only T. D. Late in the fourth period the Crusaders took to the air and executed a 91 yard drive to score. The try for the extra point was good and what had seemed an almost certain Gator victory was transformed into a deadlock.



BAND

Augmenting the natural enthusiasm and color that accompanies a football season was the pep displayed by the Allegheny band under the direction of Bob Johnson. Their eager rendition of *Near The Vale* came forth often; all of the band knew that one.

MAJORETTES

The novel pantomime drills of the drum major and majorettes were a new feature this year that pleased the crowd and shortened those half periods into next-to-nothing.



CHEERLEADERS

In the same measure, our squad of morale-building cheerleaders carried this spirit of an anticipated victory to the fellows on the team as well as to the student spectators. Their loyalty remained vigorous through all the ups-and-downs.



FIRST ROW: *Hughes, *Leahy, S. Davis, *James, *Barco, *Roberts, *Hart, McFarland, *Miller.
 SECOND ROW: Coach Hanson, Mitchell, Shurmer, Fleischfresser, *Ketcham, *Christopherson,
 *McClure, *Sayre, *Nichols, R. Davis (Manager).
 THIRD ROW: *Steinle, Werley, *Huff, Grasso, Welsh.
 ALSO: *Ferraraccio, Manager Carpenter.
 *Lettermen.

SOCCKER

Allegheny 1—Slippery Rock	3	Allegheny 1—Thiel	2
Allegheny 2—Westminster	6	Allegheny 0—Buffalo State	2
Allegheny 1—Rochester	6	Allegheny 0—Oberlin	2
Allegheny 1—Grove City	2	Allegheny 0—Edinboro	1
Allegheny 1—Carnegie Tech	0		

Severely handicapped by injuries sustained in their initial contest with Slippery Rock, the Gators received defeats in their first eight games. The Allegheny booters were unable to practice under suitable conditions, a plight which placed them at a disadvantage all season.

The seven points scored by Bill Hanson's charges were divided evenly among the men in the forward wall. Steve Miller, Paul Leahy, Pat Hughes, Roger Christopherson, and Capt. Sam Barco were featured in the Gators' offensive attack while Frank Ferraraccio, Ralph Ketcham, Ralph Roberts, and Roy James were the bulwark of the Gator defense. Goalie Sum Nichols turned in a commendable performance regularly.

The Hansonmen were slow in recovering from the physical beating they were dealt by Slippery Rock. They were unable to muster their forces in sufficient strength to cop a victory until their last contest, a 1-0 victory over Carnegie Tech.

HUZZAH!

Allegheny 1, Carnegie Tech 0





FRONT: J. Fielding, R. Miller, N. Shryock.

BACK: M. Johnson, B. Rose, N. McCune, M. Schreiber, A. Hershey, V. Bender, M. Van de Walle, V. Willis, V. Pratt, C. Callahan.

CWENS

The Cwens have helped the freshman women in getting acquainted with Allegheny during freshman week. In the fall they put on the thrilling ghost walk for them and started invading the girls' dorms two nights a week selling doughnuts to the starving students. Among their other activities under the capable leadership of Ruth Miller were the compiling of address books and the dance for freshman women in the Spring.

JUNIOR ADVISORS

Discussions after dinner on Tuesday nights in Junior Advisor groups aided the freshman girls in learning how to get the most out of their college careers. As members of these groups the girls got acquainted with each other while learning what is expected of them as members of the student body. The J. A.'s are the big sisters through whom the newcomers meet upperclassmen. Each group puts on one of the Friday afternoon open houses that have become one of our more popular customs.



FRONT ROW: G. Ware, B. Trigger, A. Koklauner, J. Leggett, H. L. McIntosh.

MIDDLE ROW: M. Hopper, M. L. Richey, C. Snell, B. Davies.

BACK ROW: M. Geysler, J. Dahlquist, N. Warren, B. J. McCafferty, M. Fuller, C. Horner.



OUTING CLUB

BOTTOM ROW: A. Graham, B. Laffer, E. Reichert, E. Albright, M. Hopper.

SECOND ROW: M. Hutchison, P. Swanson, G. Walters, B. Borgh, J. Criswell, Jun Ching Lin, D. Rassas, E. MacConnell.

THIRD ROW: P. Rosen, R. McCrea, S. Carlson, E. Mayer, J. Miller, S. Baldwin, R. Shurmer, M. Mueller.



HEELERS

BOTTOM ROW: S. Wayman, A. Allenberg, A. Kroll, A. Roberts, D. Carty.

SECOND ROW: B. Fulton, B. Wright, C. Heskamp, J. Waldo, J. Wolf, M. Mauntel, J. Smith.

THIRD ROW: M. Taylor, B. Bounds, J. Klein, M. Anderson, D. Fiedler, G. Samzelius, D. Barnes, B. Arndt, H. Schlitt, A. Perkins, B. Gooding, N. DeWalt, N. Luse, P. Shroads, J. Pond.



R. Shannor, F. Pollard, V. Claxton, M. Lynn, W. Hess, B. Simons.

ALLEGHENY CHRISTIAN COUNCIL

The Allegheny Christian Council is an organization to inspire Christian living among the students of Allegheny, not only by worship services but by activities which encourage cooperation and real friendship—all of this and lots of fun too.

The year was started with Religious Emphasis Week. Carrying on the tradition of the only all-college informal game parties, A.C.C. decorated Brooks Gym as a circus the first semester and as Davy-Jones' Locker the second. Their contribution to the college carnival was the much-publicized slave market. The all-college forums on Sunday afternoons, Bousson outings and

intercollegiate conferences also held their place in the Council's schedule.

One of the most cherished activities this year has been the daily cell group. Twenty students meet daily at noon for a ten minute meditation period. Each member takes a turn in bringing a favorite poem or reading to the group, or just initiating a discussion on a topic of current interest. These are really thought-provoking and helpful.

With the help of the new director of religious activities, next year will be even more satisfying and worthwhile.

FRENCH CLUB:

"Chaque homme a deux parties, les cienne et la France"—Th. Jefferson.

R. Garvey, J. Traver, C. Thomas, G. Owens, P. Nelms, V. Simonson, A. Graham, E. Schacht, J. Klein, J. Pryde, M. Stone.



SPANISH CLUB:

Los Caimanes: "A mal tiempo, buena cara."

P. Hummer, V. Willis, D. Nelson, C. Lingenfelter, C. Bartholomew, J. Seigley, J. Foster.



GERMAN CLUB:

"Sie können Deutsch!"—and how.

W. Lortz, A. Anderson, T. Beiler, A. Clark, D. Alexis, J. Risher, B. Orris, K. Acosta, B. Hoover.





A. King, B. McKennett, C. Piper,
R. Brugger, L. Green, P. Nelms.

PHI BETA PHI

Phi Beta Phi is the honorary biological fraternity. It was founded by Dr. Darling, and its object is to unite students interested in biology in meetings where discussions relating to the subject are held. Meetings are held in Alden and out at Bousson.

CHEMII

Chemii, an honorary fraternity for chemistry majors, was founded at Allegheny College in 1938. Its members are also associated with the Student Affiliate of the American Chemical Society. Lectures by authorities in various fields of chemistry were regular features of the monthly meetings. The alumni were entertained at an annual spaghetti dinner which was held in the chemistry building.



BACK ROW: E. Ferguson, S. Bright, B. Hulse, V. Kastelidis, W. Alexander, A. Spohr, G. Hopkins.

MIDDLE ROW: J. Risher, B. Hinman, K. Acosta, R. Brown, E. Caffisch, M. J. Elwood, A. Edsall.

FRONT ROW: M. Dickey, B. Orris, B. Hoover, D. Dittmer, J. Sayres.



MEN'S EDUCATIONAL FRATERNITY

FIRST ROW: H. Banta, D. First, R. Morris, C. Naylor, E. Smail.

SECOND ROW: B. Emery, G. McClure, J. DeJohn, P. Rogers, R. Ketcham, J. Cummings, J. Gadd, M. Brandow, R. Newell.

K. D. E.

FRONT ROW: G. Ware, M. Hopper, M. L. Rider.

BACK ROW: R. Garvey, J. Miller.

PSYCHOLOGY CLUB

OFFICERS:

R. Neville, L. Harer, P. Fairbank, G. Allen.





LEFT TO RIGHT: D. Hunt, E. McFayden, G. Walters, L. Harer, J. Longanecker, M. Nelson.

SENIOR COURT

The duty of the black-robed members of the Senior Court is not only to see that the rules of the college are obeyed, but also to act as a counseling body in case some woman student who has not broken a rule needs behavior guidance. In her capacity as vice-president of A.W.S., Tex Walters has been the very efficient president of the Senior Court this year.

PANHELLENIC COUNCIL

This year under the unusually capable leadership of Marge Nelson, the Panhellenic Council has improved and revised many of its policies. In their informal meetings, the representatives from all of the sororities have, among other things, simplified the rushing procedure for next year and adopted the project of sending CARE packages to Europe. Their social activities included the annual Panhellenic dance and party for freshman women.

FRONT ROW: G. Allen, S. Baldwin.
 CENTER ROW, left to right: C. Kelly, M. Nelson, D. Hunt, N. Brewster.
 BACK ROW, left to right: B. Davies, J. Thomas, M. Barnes, W. Grote, B. J. McCafferty, M. Howell.



SENATE

FRONT: J. Leggett, C. Sholle, H. Orth, J. Raeburn, M. Fulton, R. Jones.
 CENTER: M. Schrieber, J. Dahlquist, D. Blythe, C. Callahan.
 BACK: M. Van de Walle, V. Bender, G. Walters, H. McIntosh, A. Williams, P. Kaiser.

ACTIVITIES BOARD



M. Geysler, M. Cochran, J. Woodgate, B. Trigger, H. McIntosh, M. Hyde, J. Isherwood, M. Richey.



Winter



IDENTIFICATION FOR CANDIDS

- 1—Bridge foursome.
- 2—What am I bid?
- 3—It's only 10 to 4.
- 4—Bouss—on.
- 5—Wednesday at noon.
- 6—Old Bentley.
- 7—Stretch kids!
- 8—Sno' fun.
- 9—Westbrook Pegler?
- 10—Frosh.
- 11—Who's over a barrel?
- 12—Encore.
- 13—Yoicks.
- 14—Darn the staff!
- 15—Naturc Boy??
- 16—Now pitching.
- 17—Roll out the barrel.

IDENTIFICATION FOR CANDIDS

- 18—Sold!
- 19—It's a picnic.
- 20—Remember what happened to Adam!
- 21—See the birdie.
- 22—Ain't you pretty!
- 23—Did she steal your date?
- 24—Grilled.
- 25—No fair two against one.
- 26—Ouch!!
- 27—Which One Is President?
- 28—Very ornamental.
- 29—Aren't we all slaves?
- 30—8:30 — 9:30 — 10:30.
- 31—Painting the town.
- 32—Oh, to be on the "Campus"!
- 33—Bloomer girls!
- 34—Who's got a cigarette?
- 35—How to make a basket.



SOPHOMORE CLASS OFFICERS: *Secretary*, K. Davenport; *President*, G. Henderson; *Vice-President*, A. Hershey; *Treasurer*, J. Sandburg.

SOPHOMORE CLASS

Climbing—Climbing—With a firm toehold into this ever-challenging mountain of learning, the Sophomore class donned their climbing spikes and forcefully dug into the academic ledges for their second endeavor. Perhaps their greatest lurch over the ever-present social projections was the traditionally sponsored Sadie Hawkins Festival known previously to the advent of Li'l Abner as Leap Week.

For days wall phones at Cafisch and in the fraternity houses savagely rang themselves into a frenzy with feminine intentions patiently waiting at the other end of the line. I quote one stalwart lad invited to the morning meal by an eager and attentive damsel: "Oh the satisfaction of watching a check arrive to the table—the pleasure of fondling it and absorbing its total, only to observe the opposite sex dig down into the confines of financial resources and pay off." The climax for seven days of dates-in-reverse arrived in the shrouds of the boy chase-girl dance well attended, and a regular jewel in the year's treasure chest of enjoyment.

With the year approaching its twilight hours, the Sophomores leaned back into their safety ropes and took stock of the situation. True, they were only half way up the unpredictable sides of the elevation that eventually leads to a sheepskin plateau; but the gratifying presence of another year's accomplishment lay far below in the valley of mastered textbooks, projects and general assignments.

JUNIOR CLASS

Climbing—Here are the Juniors. To date they have ascended more than half the distance of the jutting profile that will ultimately lead them to the pinnacle they have been struggling toward for two long years.

Who will question the fact that THE prime efforts of any Junior class are wrapped up in the construction of a successful prom. By the same token who will question the utterance that this past year's prom was anything but the product of perfection. As a result of ingenious decoration the dance floor was transformed into an ionosphere of silver and blue hues highlighted through the medium of a gigantic star placed over the windows and sattelited with smaller stars attached to pillars encompassing the scene of dancing activity. Those fortunate to be captains of their own imaginations may well have spent the better part of the evening "Dancing On Air" in the spirit of an artificial but nevertheless convincing atmosphere.

The lead climber has informed his fellow "Alpineites" to slack all lincs, and prepare for the final surge up the headwall that eventually culminates in that zenith otherwise translated as the end of the learning trail for the class of 1949.

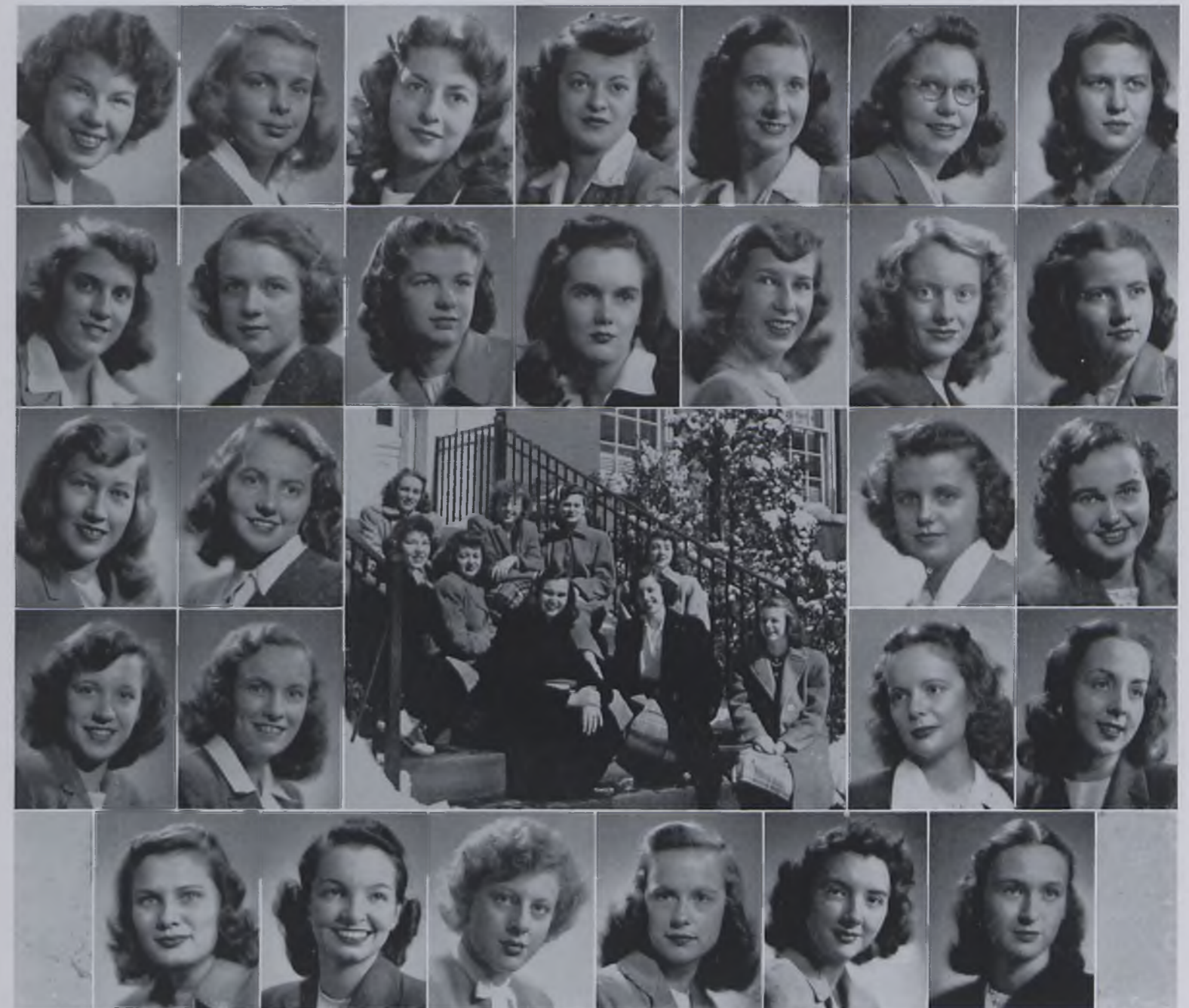
JUNIOR CLASS OFFICERS: *Treasurer*, H. Crawford; *Vice-President*, C. Horner; *Secretary*, B. Trigger; *President*, F. Pollard.





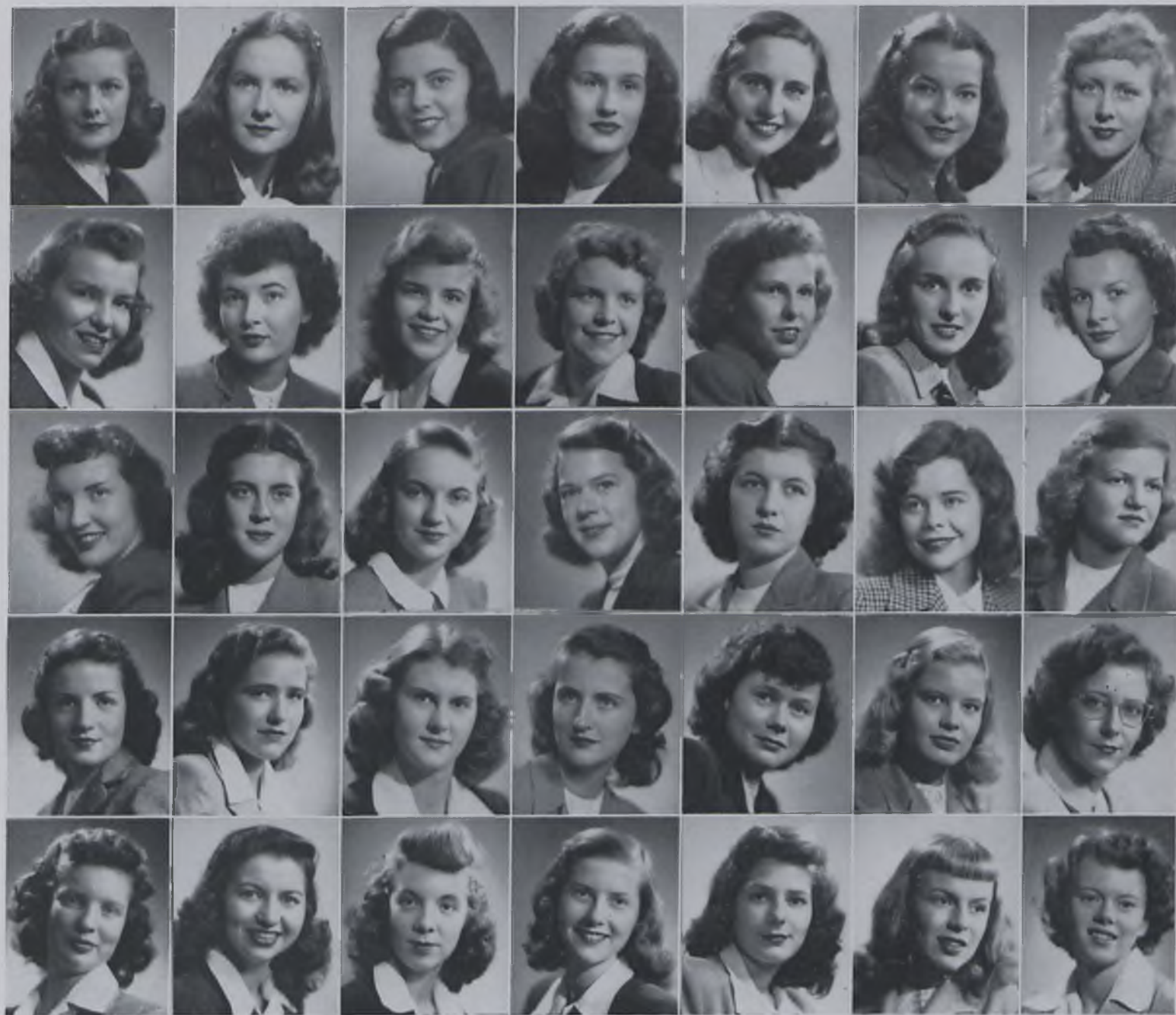
FIRST ROW: Margaret Bailey, Betty Baum, Jean Bowsor, Ann Boyd, Helen Burns, Marjorie Carr, Pauline Cole.
 SECOND ROW: Lois Curry, Kay Davenport, Martha Dengler, Ann Edsall, Mary Lou Flannagan, Ann Grether, Martha Hopper.
 THIRD ROW: Margaret Howell, Martha Hutchison, Dorothy Jones, Alice Koklauner.
 FOURTH ROW: Mary Margaret Laffer, Nancy McCandless, Charlotte McClelland, Natalie Mosher.
 FIFTH ROW: Marjorie Nelson, Ruth Neville, Harriet Orth, Virginia Pratt, Jean Raeburn, Elizabeth Randolph, Elizabeth Robinson.
 SIXTH ROW: Joan Seigley, Helen Shakely, Lois Sherwood, Elaine Stewart, Jean Thomas, Barbara Trigger, Sylvia Trumpeter.
 SEVENTH ROW: Louise Wilson.

*Alpha
Chi
Omega*



FIRST ROW: Virginia Anderson, Jean Shilling Bare, Helen Baumbach, Lois Baumbach, Reta Betler, Constance Callahan, Louise Church.
 SECOND ROW: Marjorie Cochran Thomas, Jean Criswell, Mildred Flockhart, Joan Graeber, Dallas Hunt, Jean Isherwood, Ruth Jones.
 THIRD ROW: Doris Kable, Pat Kerschner, Jean Pryde, Betty Rose.
 FOURTH ROW: Marjorie Ross, Hope Rowan, Julianne Purvis Schick, Doris Scott.
 FIFTH ROW: Helen Stenstrom, Marilyn Ulman, Gertrude Walters, Geraldine Ware, Marilyn Werley, Vivian Willis.
 ALSO: June Hage, Margaret Barnes, Charlotte Rogers.

*Alpha
Gamma
Delta*



FIRST ROW: Beverly Baldwin, Filis Baldwin, Virginia Bender, Deanne Blyth, Joanne Bockel, Nancy Brewster, Orca Brubach.
 SECOND ROW: Marcia Bulger, Carol Clark, Jane Fielding, Marilyn Fuller, Nancy Fulton, Miriam Geyser, Carolyn Griffiths.
 THIRD ROW: Alice Evans Haag, Anne Hershey, Marjorie Hughes, Marcia Johnson, Audrey Jean King, Eleanor Laughlin, Jean Longanecker.
 FOURTH ROW: Joan Loughney, Betty Jane McCafferty, Barbara Manning, Anne Massa, Nancy Meyers, Marilyn Miller, Sally Miller.
 FIFTH ROW: Marilyn Muekinhopt, Nancy Rohrkaste, Sally Schaefer, Carol Snell, Emily Steliotes, Shirley Wiley, Clarice Williams.

*Kappa
Kappa
Gamma*



FIRST ROW: Marjorie Beck, Colette Brosky Steinle, Helen Coburn, Jeanne Dahlquist, Barbara Davis, Dorothy Dittmer, Carolyn Horner.
 SECOND ROW: Ardis Kaufman, Jean Keck, Nancy Keibort, Carol Kelly, Joan Lafean, Cicely Lawrence, Jacqueline Leggett.
 THIRD ROW: Betsy Lichtenfels, Doris Manos, Betty Masek, Nancy McCunc, Hazel Lou McIntosh, Beverly McKennett, Ruth Miller.
 FOURTH ROW: Elizabeth Nichols, Mary Ellen O'Brien, Joan Peters, Jacqueline Peterson, Zelma Pitt, Patricia Pointer, Mary Lee Pollock.
 FIFTH ROW: Janet Ryman, Marilyn Schrieber, Nancy Shryock, Mary Eleanor Taylor, Marion Teasdale, Martha Van de Walle, Nancy Warren.
 SIXTH ROW: Patricia Watts, Janet Winkler, Joan Zainor, Nancy Zenn, Martha Zimmer.

*Kappa
Alpha
Theta*



FIRST ROW: Dorothy Alexis, Sally Baldwin, Shirley Bantz, Florence Brownell, Shirley Carlson, Miracyl Cavelti.

SECOND ROW: Helen Clay, Mary Jane Difford, Harriet Eastman, Jean Foster, Louise Foster, Emma-Jane Frankel.

THIRD ROW: Jean Gillis, Mary Lou Griffiths.

FOURTH ROW: Corinne Lingenfelter, Mary MacQuown.

FIFTH ROW: Dorothy Miller, Betty Meyers, Jean Risher, Betty Lou Thomas, Nancy Sholes, Lois Vice.

*Theta
Upsilon*



Alpha Xi Delta

FIRST ROW: Gloria Allen, Henrietta Bernhardt, Betty Borgh, Frances Carpenter,

Margery Dickey, Barbara Doyle.
SECOND ROW: Laura Dunn, Phyllis Fairbank, Joanne Fuerness, Wilma Grote, Beatrice Hoover, Esther McFayden.

THIRD ROW: Janice Miller, Betty Norton.
FOURTH ROW: Betty Orris, Betty Pappenhagen.

FIFTH ROW: Annabel Regan, Doris Roha, Corinne Russel, Helen Schmutz, Lavina Smith, Nancy Ulman.

SIXTH ROW: Betty Jane Vollet, Adele Weir, Betty Wheeler, Marcia Woodburn, Jean Woodgate.



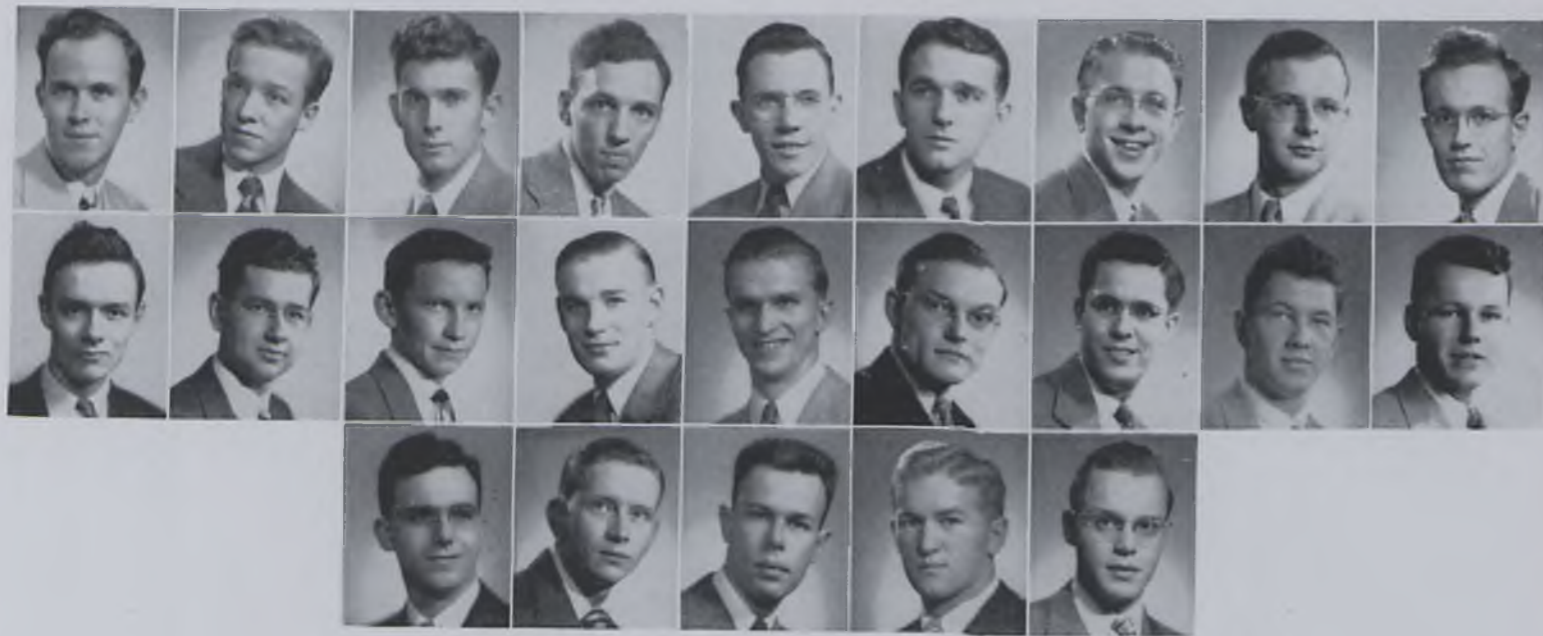
FIRST ROW: Eva Abramson, Kathryn Acosta, Ellen Albright, Helen Aldridge, Alma Alt, Catherine Anderson, Frances Artau.
 SECOND ROW: Mary E. Bates, Renee Binder, Norah Bolanos, Virginia Bowman, Dorothy Brandon, Leota Brown, Virginia Campbell.
 THIRD ROW: Edith Carberry, Virginia Claxton, Margaret Clement, Betty Croasmun, Carol Currier, Joan Decker, Vera Dewald.
 FOURTH ROW: Mary Lou Digel, Mary Jane Elwood, Margaret Fatkin, Mildred Finkel, Rosella Forkey, Marjorie Fox, Marian Freitag.
 FIFTH ROW: Mary Louise Fulton, Reba Garvey, Rita Ginn, Corrinne Gourd, Lois Green, Dorothy Hankey, Marilyn Harer.
 SIXTH ROW: Lydia Hartley, Betty Heil, Elizabeth Hinman, Marion Hyde, June Iben, Nellie-Marie James, Claire Lee Jensen.

Non-Sorority Women



FIRST ROW: Graciela Jimenez, Barbara Jones, Mary Lou Keefer, Patricia Kiser, Barbara Laffer, Harriet Leffingwell, Jun-Ching Lin.
 SECOND ROW: Bette Marsh, Estelle Mayers, Dorothy McKnight, Audrey Meyer, Jane Miller, Janet Mulvie, Phoebe Nelms.
 THIRD ROW: Ruth Pidgeon, Deenie Rexas, Jane Raum, Lois Reusch, Mary Lou Richey, Mary Lou Rider, Patricia Sanders.
 FOURTH ROW: Jean Sayers, Lorry Shaul, Jewel Shaw, Nora Lee Shull, Doris Seibert, Verna Simonson, Rubie Sittig.
 FIFTH ROW: Eltie Smith, Josephine Smith, Mable Smith, Mary Lee Smith, Roberta Stewart, Margaret Stone, Janet Thomas.
 SIXTH ROW: Joan Thomas, Margaret Tidmarsh, Mary Tuve, June Traver, Leola Wasson, Audrey Watt, Virginia Winston.
 SEVENTH ROW: Martha Wright.
 ALSO: Elizabeth Lindgren, Eleanor Reichert, Joy Rogers, Mary E. Thoma, Lois Van Bremen, Jane Winship.

Non-Sorority Women



FIRST ROW: Willis Alexander, John Bowlus, Philip Brown, Allen Chambers, Edward Donner, Harris Dreibelbis, Edgar Ferguson, Robert Habich, George Hartung.

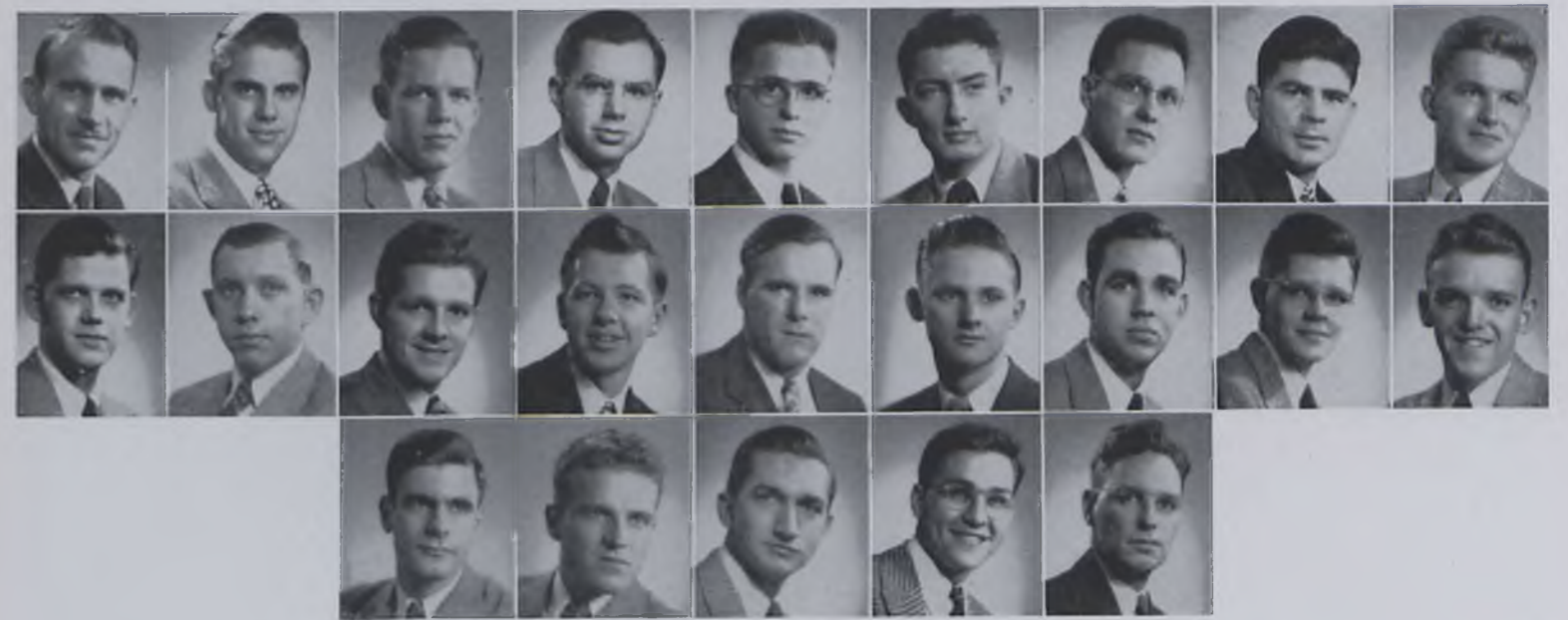
SECOND ROW: Richard Hartung, William Hess, Reed Hurst, Earl Johnson, Harry Marshall, James Olds, James Reetz, James Root, Gilmore Scholcs.

THIRD ROW: Reed Stormer, Lowell Thomas, William Thomas, Paul Welty, Dale Whittal.

ALSO: Samuel Barco, Charles Koeppen, Angelo Mazza, Walter Stanton, William Wagener.



*Theta
Chi*



FIRST ROW: John Armitage, Clarence Bierworth, Edward Caffisch, Emerson Christie, Albert Geyser, John Henderson, Edgar Henry, James Holmes, Robert Houston.

SECOND ROW: Philip Hultman, Charles W. Johnson, Graham Marsh, Roger McCrea, Bryce McMichael, John Mitchell, Robert Morrow, Charles Norquist, Thomas Patterson.

THIRD ROW: Harry Puritan, Frances Richmond, George Sloan, Robert Sprute, Roscoe Turner.

ALSO: George Allen, David Clark, Samuel DeSantis, John McGinley, Regis Reasbeck, Hannes Soderling, Raymond Titus.

*Alpha
Chi
Rho*





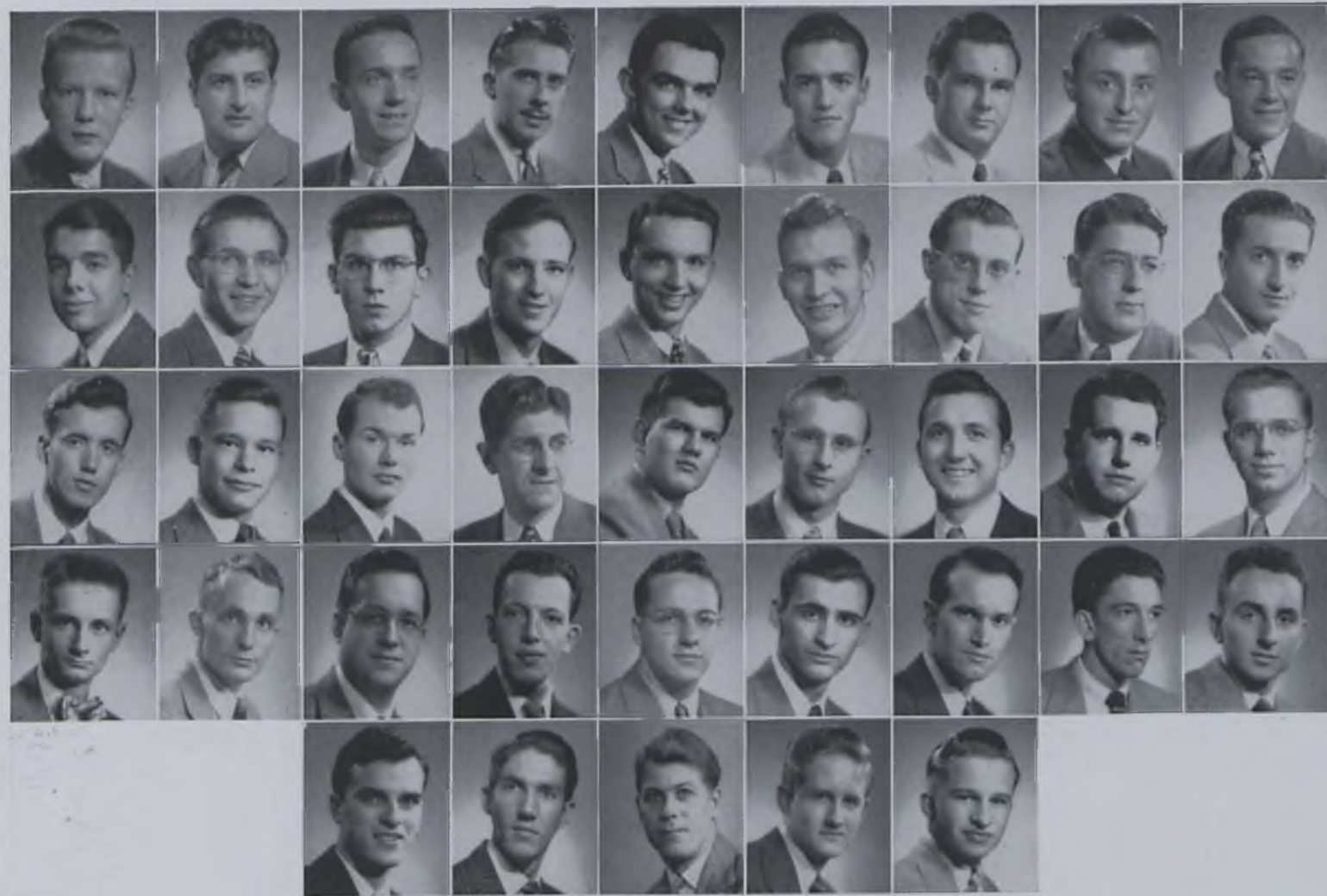
FIRST ROW: Donald Acker, Charles Adamson, Peter Albright, Richard Andres, Robert Andres, Frank Bakewell, Douglas Benson, Steven Birmingham, David Blakely.
 SECOND ROW: William Challenor, Joseph Chivers, Duane Clark, Thomas Cutter, Richard Deering, Robert Deitch, James Edwards, Gordon Elliott, Jack Erwin.
 THIRD ROW: James Feisley, William Feisley, Frank Ferraracio, Frank Fitch, Bernard Frick, Dwight Haag, Duff Hopper, Richard Hughes, Thomas Jamieson.
 FOURTH ROW: Curtis Johnson, John Kelley, Dudley King, Robert Larson, Richard Lavery, Randall Limber, Jay Luvaas, Dick McEwen, Phil McFarland.
 FIFTH ROW: Neil McGahen, David Meehan, Larry Merriman, Charles Morneweck, Eugene Noble, Len Present, Dick Rath, John Robinson, Phil Rogers.
 SIXTH ROW: Richard Schaefer, Kenneth Schick, Richard Shanor, Bert Simmons, Edward Smail, William Stidger, Jack Strome, Robert Sweet, William Wylie.
 SEVENTH ROW: Phil Young.
 ALSO: Roger Christopherson, Al DeRussey, Harold Fleishfressor, William Glenn, Robert Manley, Jack Reddecliffe, Donald Seidel, Eugene Smoot, George Strong, John Towns, Richard Victor.

Phi
Delta
Theta



FIRST ROW: Norman Baker, Robert Beighel, Joseph Bentley, Robert Betz, Gilbert Black, Harry Blakely, Jack Bowman, Ralph Brugger, John Burgess.
 SECOND ROW: Arthur Carlson, Robert Carman, James Carr, Hugh Crawford, Frank Cubbons, Walter Dart, Robert Eisler, William Fairbank, Melvin Gerseny.
 THIRD ROW: Wayne Gordon, James Hall, William Hall, Donald Hamilton, Steve Hart, Samuel Hazelbart, John Henry, Donald Horton, John Houserman.
 FOURTH ROW: Jay Huff, Roy James, Robert Landon, Paul Leahy, Franklin May, Donald McClimans, Robert McGill, James McHolmes, Donald McKay.
 FIFTH ROW: David Meyers, Ben Micelli, Steven Miller, William Morrow, Robert Muckley, Sumner Nichols, Leroy Paul, Hugh Phythyon, James Phythyon.
 SIXTH ROW: Charles Piper, William Porterfield, Robert Pryde, Fred Redding, Charles Rimer, William Rylander, William Shields, Wallace Smith, Clifford Smoot.
 SEVENTH ROW: John Snedeker, Robert Stanton, James Thoburn, William Thoburn, Robert Trace, Larry Thompkins, Lloyd Whitney.
 ALSO: Arthur Baldwin, Willard Flint, William Guerdon, Charles Johnson, Frank McCafferty, Edward Petrie, Frank Steinle, Henry Wallace.

Phi
Gamma
Delta



FIRST ROW: Albert Anderson, Fred Antoun, Harry Banta, Cloyd Bartholomew, Donald Beard, Paul Berner, William Brownell, Joseph Calahan, Albert Carpenter.
 SECOND ROW: Alan Clarke, Richard Davis, Robert Davis, David Ellis, Thomas Fort, Ralph Horton, Joseph Cadd, Fred Guenther, Vladimer Kastelidis.
 THIRD ROW: Ralph Ketchum, Irwin Krueger, William Lortz, Gerald McClure, Robert McCune, Robert McKeel, Fred Mitchell, Andrew Nixon, Jack Nixon.
 FOURTH ROW: John Pfeeger, Spencer Phillips, Richard Pierson, John Ritter, Ralph Roberts, John Ruggerio, Bernard Simmons, John Smith, Richard Smith.
 FIFTH ROW: Paul Stafford, William Tighe, Frank Turner, David Westneat, John Woods.
 ALSO: James Ells, Thomas Gallagher, Richard Hastie, David Hayden, Ron Loew, William Mould, Mark Mueller.

Delta
Tau
Delta



FIRST ROW: Robert Alexsah, Joseph Backus, Roger Bailey, Clarence Bair, Samuel Blair, Samuel Bright, Jay Brunner, Richard Burgart, Robert Chambers.
 SECOND ROW: David Conrad, Robert Daniels, James Devine, Nathan Edelblute, Thomas Enright, Alden Faudie, James Forman, Andrew Graham, Gene Graham.
 THIRD ROW: Donald Graydon, George Henderson, William Hepler, William Hill, George Hopkins, Thomas Johnson, David Kraft, William Lamb, Guy Lawhead.
 FOURTH ROW: Roland Levine, George Main, John Manos, David McCafferty, Howard Miller, Miles Mutchler, Sam Pees, John Pepper, William Potter.
 FIFTH ROW: Walter Reisch, David Roese, Samuel Rose, Robert Seibert, William Seidel, Walter Sigworth, Al Stone, Richard Sullivan, Parker Swanson.
 SIXTH ROW: Robert Woods, Clive Wright, William Wright, David Zurbrick.
 ALSO: Norval Anson, Edward Avetta, Henry Baldwin, Richard Brown, Steven Davis, Joseph Dickey, Richard Erwin, Frank Fuhrer, James Grove, Richard Kahl, Richard Meyer, Alvah Phillips, Ernest Pracejus, Paul Reardon, Charles Ritter, Archie Richardson, Leon Rogers, Jonathan Sandberg, Charles Thompson, Roger Wiley.

Sigma
Alpha
Epsilon



FIRST ROW: Donald Aichner, William Allison, William Barnes, Donald Brebner, Guy Brock, James Cummings, Paul Dain, Jack Gizzie, Roy Glazier.

SECOND ROW: Robert Gray, Brooks Hollenbeck, James Jenkins, William Kees, Richard Lord, Elgin MacConnell, Richard Madtes, Jack Marshall, Robert Miller.

THIRD ROW: Robert Moore, Daniel Morse, William Muir, Richard Noonan, Vernon Reed, George Schied, Robert Shannon, Richard Schurmer, Kenneth Smith.

FOURTH ROW: Lynn Snyder, Raymond Stahl, Robert Wagner, William Walker, Neal Winkler, Harold Woods.

ALSO: William Baum, James Boulger, William Brandow, John Coleman, George Ely, Edward Filer, Dana Harland, James Isherwood, Willard Klapthor, Frank Pollard, Robert Snyder, Richard Stewart, Vernon Stride, Harold Warner.



Phi
Kappa
Psi



FIRST ROW: Robert Adams, Howard Adams, Maurice Atwell, John Baird, Neil Barnes, Theodore Beiler, Richard Beimer, Howard Boylan, Roger Boylan.

SECOND ROW: Ernest Breed, Raymond Brown, Michael Cole, Gordon Carrier, Cosmo Catalano, Joseph Clancy, Joseph DeJohn, Samuel DeSantis, Lorin Dickinson.

THIRD ROW: Edward Eastman, Robert Edwards, Fred Edwards, Bernard Emory, David Freigert, Thomas Ferris, Percy Franklin, Donald Grant, Alfred Grasso.

FOURTH ROW: Walter Greenleaf, Herbert Hall, Arthur Hannah, Lewis Hastings, Charles Herter, Donald Higby, Leonard Higby, Fred Hildebrand, John Hipps.

Non-
Fraternity
Men





FIRST ROW: David Hodge, Bernard Hulse, Edward Humes, Finley Hunter, Robert Hunter, Blair Kalasa, William Keim, Alfred Kern, Frederick Kibler.

SECOND ROW: Thomas Kirkpatrick, John Levinsky, Gerald Liebman, Ralph Luffler, William Luttrell, R. A. Lysowski, Arthur Mayer, Raymond McCall, Robert Merrill.

THIRD ROW: Victor Micelli, Edwin Moore, Robert Morris, Ralph Nauman, Robert Newell, Ernest Newton, Daniel O'Day, John Page, John Palmer.

FOURTH ROW: Craig Patterson, Russell Perry, Robert Pierson, Pierre Poux.



*Non-
Fraternity
Men*



FIRST ROW: Lewis Pyle, James Pysher, Paul Randolph, R. B. Roberts, Frank Rosen, Richard Rossbacher, George Rumsey, John Sewell, Keith Smith.

SECOND ROW: Robert Smith, Arthur Spohr, Ralph Stadler, William Swick, Jaques Talbot, Arthur Thayer, Anthony Trucco, Donald Wargo, Howard Wilfong.

THIRD ROW: Eugene Wolsk, Charles Wright, William Wright, James Wygant, Edward Yetman, Howard Yocum, Norris Young.

*Non-
Fraternity
Men*





BASKETBALL TEAM

*Montgomery, *Andres, *Kahl, *Feisley, *Potter, *Miller, *Nichols.
 Back: Barco (Manager), Patterson, McKay, *McClure, Baker, Coach Werner.
 *Lettermen.

Allegheny	62—St. Vincent	50
Allegheny	36—Case	50
Allegheny	34—Oberlin	37
Allegheny	51—Wooster	66
Allegheny	56—Rochester	46
Allegheny	68—Thiel	53
Allegheny	62—Earlham	37
Allegheny	61—Grove City	43
Allegheny	58—Slippery Rock	42
Allegheny	33—Pittsburgh	51
Allegheny	45—U. of Buffalo	46
Allegheny	48—Grove City	56
Allegheny	71—Hamilton	49
Allegheny	52—Geneva	63
Allegheny	57—Carnegie Tech	43
Allegheny	34—Alfred	54
Allegheny	50—Buffalo State	52

The Gator five walked over St. Vincent and moved west where the opposition proved more capable. Lost on the large Cleveland Arena floor they fell easy victim to Case. The following evening Oberlin nosed them out of the win column by 3 points and the Gators returned reeling from the effects of an unsuccessful trip to Ohio. Wooster moved into Montgomery Gym and proved themselves masters of the occasion. This Ohio quintet was one of the classiest aggregations to appear in Meadville all year.

With an unimpressive record of 1 win and 3 losses the local cagers brought their big guns into play and started to win ball games. Allegheny swept clean victories from Rochester, Thiel, Earlham, Grove City, and Slippery Rock successively to end the first half with a record of 6 and 3.

Returning to the court after more than a two week lay-off Allegheny lost to a superior Pittsburgh five. Buffalo U. won a thriller by 1 point and Grove City triumphed on their home floor. Allegheny compiled their largest score, 71 points, to beat Hamilton and then fell



down before a hot Geneva team. Allegheny's impressive 14 point victory over Tech broke the jinx that has seemed to spoil Gator-Tartan contests during the last few years. The local floormen journeyed to New York and were defeated by Alfred's very able quintet. The season closed at Montgomery Gym as the Gators lost a close one to the very fortunate Buffalo State hoopsters.

Feisley and Potter were high in a single game with 20 points. Paul Miller compiled 221 points during the season to top scoring honors, followed by Feisley with 161 points. Allegheny scored 878 points while 848 were scored against them. The Gators averaged 51.6 points to their opponents' 49.9 average. The locals made 216 of a possible 378 fouls for a percentage of 57.1.





*Zuberbuhler, *Byham, *Sayre, *Smith, Baum, Wilson, Gizzie; 2nd Row: Hanson (coach), Welsh, *Paul, Bonner, Taylor, Norquist, Muir (Manager); 3rd Row: Newton, Baur, Story, *Schlitt, *Davis, *Lettermen.

SWIMMING TEAM

During the 1947-48 season Allegheny's very adroit swimming team under the coaching of Bill Hanson compiled an impressive record of 7 wins, 3 losses and 1 tie. These zealous swimmers not only managed to win meets, but they seem to have specialized in breaking past records.

Sayre was not only high scorer with 99 points for the season, but he broke 2 school records and one pool record.

The 400 yard relay team of Smith, Schlitt, Byham and Sayre bettered the pool record by 2.4 seconds and the school record by 46.4 seconds.

Zuberbuhler, Baum, and Byham beat the previous school record in the medley by 11.2 seconds.

During the 1947-48 season Coach Hanson's Swimming team's record reveals brilliant individual achievement coupled with fine teamwork, a combination that spells success.

Allegheny	47—Grove City	19
Allegheny	44—Edinboro	22
Allegheny	21—Pittsburgh	45
Allegheny	21—Westminster	45
Allegheny	43—Thiel	18
Allegheny	33—Case	33
Allegheny	27—Westminster	39
Allegheny	45—Slippery Rock	21
Allegheny	44—Edinboro	22
Allegheny	46—Grove City	20
Allegheny	39—Carnegie Tech	36



BLOCK A

FRONT ROW: (l. to r.) D. Hamilton, S. Hart, J. Marshall, G. Hopkins, S. Miller, L. Paul, F. Ferraraccio.

SECOND ROW: P. Leahy, F. Feisley, D. Benson, F. Steinle, D. Zurbriek, F. Pollard, R. Meyer.

THIRD ROW: P. Hughes, V. Reed, R. McEwen, E. Filer, R. Ketchum, P. Berner, L. Tompkins, R. Glazier, R. Limber, W. Porterfield, R. James.

FOURTH ROW: S. Nichols, C. Smoot, R. Andres, D. Kraft, R. Beighel, D. Morse.

Now hear this! All hands fall out for a cider and doughnut party. Where? Montgomery Gym after the Homecoming Game.—Who's giving it?—Why the Block "A" Club of course. Will it be good? Good! Don't be trite friend, it will be colossal! terrific! stupendous! and to say the very least FIRST CLASS in every respect. In retrospect it was just that and some to spare. Hats off to Frank Steinle and his organization of lettermen for their contributions to all Allegheny sporting events on and off campus.

W. A. A.

This year the W. A. A. sports program was inaugurated with volleyball. Each Freshman dorm and teams made up of various sections from Brooks were represented on the circuit that finally narrowed down to one championship team. The same procedure as followed during the basketball and baseball seasons, with an added attraction in the form of an hilarious faculty-student basketball game. Jackie Leggett and her board of officers capably served the women through this organization by offering them opportunities to participate in intramural sports.

WOMEN'S ATHLETIC ASSOCIATION

FRONT ROW: (l. to r.) A. Hershey, B. Davies, J. Miller, B. Pappenhagen. SECOND ROW: P. Rosen, V. Pratt, R. Stuart, M. Woodburn, S. Johnson, J. Leggett, B. Laffer, A. French.





ORCHESIS

(L. to R.) N. M. James, Miss Ayrault

(L. to R.) L. Dunn, A. Williams, F. Brownell, E. Carberry)



BOOTS AND SADDLES

FRONT: (l. to r.) S. Baldwin, M. Ulman, Z. Pitt, Miss Ayrault.

BACK: B. Laffer, M. Woodburn, J. Iben.

TERRAPIN

l. to r.—Barbara Jones, Marguerite Stone, Phyllis Rosen, Ruth Ridgway, Carolyn Griffiths, Corinne Lingenfelter, Barbara Davies, Dallas Hunt, Gertrude Walters, Virginia Anderson, Edna Fuller, Joanne Thomas, Rita Ginn, Florence Brownell, June Herz, Martha Wright, Margaret Bailey.



J. Bowlus, F. Fitch, F. Richmond, E. Nichols, J. Sandberg, D. Brandow, R. McCall.

PHILO-FRANKLIN UNION

With Ray McCall as their unusually capable president this year, the Philo-Franklin Union had an active and a worth-while year. The first big event of the season which attracted a capacity crowd to the chapel, was the debate between two Oxford University students and Ray McCall and Frank Fitch. The two Oxford men later accepted honorary memberships in Philo-Franklin. The annual men's and women's speech contests were won by Frank Fitch and Barbara Webb. Ray McCall won first prize in the Wakefield Speaking Contest, with Robert Trace winning second and Penny Nichols, third. The last contest of the year was that for the freshmen speakers.

The year's biggest event was the holding of the State Oratorical Contest at Allegheny. Of the college debaters who represented colleges from all over Pennsylvania, the ones from Swarthmore won this contest. Ray McCall made us very proud by winning the first prize among the men's individual speakers and Penny Nichols upheld Philo-Franklin's standing by winning the women's second prize.

The Philo-Franklin members made trips to other colleges during the year to participate in debates.

This year the custom of electing honorary members was revived. Winston Churchill, former Prime Minister of England and Robert Jackson of the Supreme Court both accepted memberships in Philo-Franklin.

The members finished this year's activities with high hopes for expanding their activities even more next year.



FRONT ROW: (l. to r.) A. Boyd, D. Scott, J. Hassell, M. L. Keefer, A. Alt, Mr. Luvaas, E. Nichols, J. Gillis, L. Green, M. Wade, J. Young, B. Norton.
 SECOND ROW: J. Longanecker, R. Pidgeon, E. Beecham, J. Fuerness, M. Tuve, M. Dickey, B. Lorz, B. Roher, C. Hunt, B. Hinman, E. Koester, D. Dittmer, D. McKnight, L. Dunn, M. Dengler.
 THIRD ROW: G. Beuchat, P. Nelms, J. Marshall, F. Bakewell, W. Shields, R. Limber, E. Bonner, R. Stormer, D. McClimans, H. Miller, B. Daniels, N. Shull, J. Woodgate.
 FOURTH ROW: I. Kruger, G. Black, D. First, J. Peffer, P. Albright, R. Andres, D. Conrad, R. Conrad, G. Hanson, P. Poux, R. Eisler, R. Dietsch, D. Clark.

"Drop around near the Oratory any time, afternoon or evening, and you're likely to hear the Singers rehearsing"—this has been one of the most traditional and unchanging aspects of life at Allegheny since the founding of The Allegheny Singers back in 1931.

Directed, inspired, and personified by Dr. Morten J. Luvaas, the Singers compose one of the hardest-working organizations on campus; they are constantly striving for perfection in tone quality, interest and variety in their selections, and excellence in their presentation. How near they come to realizing these high standards may be judged by the enthusiasm with which their concerts are received by the student body at Christmas and Easter, and by the number of sellout audiences when the Singers embark on their Annual Spring Tour.

This year's tour included appearances at Beaver, Erie, Indiana, York, Everett, Johnstown, Waynesburg (all in Pennsylvania) and at Morgantown, West Virginia and Jamestown, New York. The highlight of the tour was their concert at Carnegie Music Hall in Pittsburgh.

Appreciative audiences are constantly demanding numerous encores from this outstanding and nationally-known group of fifty-eight Allegheny Students who, perhaps more than any other group, achieve a great amount of satisfaction as their reward for striving and working hard to create beauty and perfection and imagination in music.

CHAPEL CHOIR

During the 1947-48 school year, Chapel Choir has attained a new height in spirit. Starting out with a "bang," the choir has developed into an organization that the school can rely upon for performances in the chapel and elsewhere. The Singers-chapel Choir's combined Christmas Concert was very effectively produced after many long practices three nights a week. Several assemblies and the Palm Sunday chapel service were also on the year's program. Under Bob Johnson's capable direction and drive, the choir was able to make a short trip to Cambridge Springs for a concert. The May Day activities were enhanced by the sixty-odd voices raised in a blending of fine quality. Unable to make a personal radio appearance, the choir personnel met to make records during an afternoon, and have thus made their radio debut by proxy. With the fine singing the group has done this year, we look toward next year with anticipation and promise of an additional group to aid in chapel activities.

FRONT: M. Mauntel, B. Bounds, S. Thomas, B. Thomas, B. Arndt, E. Miller, C. Mahnke, P. Lafer, B. Johnson, E. Brown, P. Cole, B. Lichtenfels, R. Forkey, C. Sholle, J. Peterson, S. Schaeffer, N. Tolley, A. Reagan.
 SECOND ROW: J. Bowman, M. Renaud, V. Oehmler, V. Willis, P. Hockensmith, D. Hunt, W. Grote, H. Bernhart, R. Betler, C. Callahan, S. Trumpeter, A. Williams, M. Carr, C. Scribner, L. Curry, J. Rogers.
 THIRD ROW: V. Campbell, J. Buchner, R. DeKay, R. Nauman, B. Hulse, H. Marshall, T. Hartung, S. Kahn, D. Hodge, M. Brandow, E. Lafean, J. Baird, W. Sigworth, E. Stidger, M. Tidmarsh.
 FOURTH ROW: S. Carlson, J. Waldo, B. Muckley, D. Zurbrick, E. McConnell, B. Barnes, L. Sanders, B. McKeel, N. McGahan, G. Marsh, D. Hileman, P. Storing, W. Klapthor, R. Brown, R. Price, D. Barnes, A. Giesler, B. Stacey.





THE ALLEGHENY PLAYSHOP
 this year was literally humming with activity and, if you don't believe us, just drop around and ask the inexhaustible Mrs. Bird, who took over the helm of the dramatics department when "Father John" Hulburt left for his tour of Europe. And if you are still not satisfied, take a look at the imposing list of accomplishments which the Arter Hall basement can boast for the school year.

The first production, which was presented the week of October 25-November 1, was "The Importance of Being Earnest", a light comedy which recently enjoyed a long run on Broadway. All of us who saw this subtle mixture of whimsy and reality will agree that it was well and imaginatively done.

Next, as a sort of parting gift (and what a gift it was!) from Mr. Hulburt before he went to Europe for a study of foreign theatre, came "The Little Foxes", with Mary Jane Chiles returning to her Alma Mater to play the part of the scheming and unscrupulous Regina Giddens. The remainder of the cast in "Foxes" was made up of several members of the faculty who, with the cream of the student players, gave a show which was talked about for weeks after its closing on December 6.

Barbara Webb, drama major *par excellence*, turned her hand to playwriting in January and the result was "Birthday Buddy", a children's play which was a delight to the children of Meadville and a source of satisfaction to the adults who dropped in to see the colorful presentation of the story of the boy who had everything. This play represented Miss Webb's senior comprehensive and her attempts were well received.

Not to be outdone, Leake "Brutus" Bevil directed the production of "Out of The Frying Pan" as his comprehensive, and the hilarious situations and madcap slapstick of this play had many an Alleghenyite rolling in the Playshop aisles during the week of March 15-20. Congratulations to Mr. Bevil, for giving us all a most enjoyable evening.

Along came the All-College Carnival, on March 6, and for the third time one of the students stepped to the fore to take charge of an entire production. This time it was Joel Rosenblum, whose "Hotel Musicale", which he wrote and directed and produced and composed, topped off a gala evening of fun over and above the madhouse in Montgomery Gym.



The Playshop saved the best for the last. During the week of May 3-8, they came up with "Joan of Lorraine", Maxwell Anderson's long but engrossing and dramatic opus. Again we must give special credit to "Butch" Webb for her forceful, understanding, and all-around *good* portrayal of the title role. This, the 'Shop's final offering, left very little to be desired.

All in all, we can say that the year in our Playshop was a productive and altogether successful one, and provided a high standard by which we can measure its years to come. Next year the Playshop will lose many of the people who were its backbone and who were responsible for much of its artistry and success. But, although they will be missed, we can still hope that the Playshop will continue to create and disseminate the results of its talent and imagination to give us seasons which will be as rich and satisfying as that of 1947-1948.



THE AMPUS

OF ALLEGHENY COLLEGE



Esther McFayden, Assistant Editor, and Sally Miller, Editor.

"Published Wednesdays during the school year by students of the college". That's all the masthead of the "Campus" has to say about itself. As any member of the staff will testify, however, this simple "published Wednesdays" is a very mild statement.

A typical "Campus" was begun even before the previous week's edition had been handed out. Assignments were handed to reporters, who were in most cases freshman contenders for the staff. All through the week, at all types of events, the reporters were on the job, digging out the facts and writing them up. By Sunday evening a large supply of copy was waiting at Brooks desk, where Sally Miller picked it up on the way to the Campus office. Ever wonder about the lights in Bentley basement

on Sunday evenings? The Campus staff didn't move much in social circles on Sunday nights, for it was then that the almost endless work of editing, rewriting, and makeup began.

Sally, as editor in chief, had the task of generally organizing and coordinating all work. In their own words, the editorial and news staff "all did everything." Esther McFayden, as assistant editor, handled the rewriting of news stories. The reporting was in most cases good, but in many cases stories had to be changed or revamped completely. The news editors, John Kelley, Mary Lou Richey, and Bob Alexsaht, and technical editor, Duff Hopper, bore the brunt of the necessary writing, rewriting, and makeup. Much time was usually spent in track-

ing down late items or phoning for information on items previously missed. At the close of the evening's work, approximately half of the week's copy was consigned to the Tribune Office in downtown Meadville, where the actual printing took place.

Monday evening was more of the same, with the further complication that Sunday Night's copy was now in print and present in galley-proof form. Checking all proofs was the additional responsibility of Hopper.

Judy St. Clair, as feature editor accepted and edited all features, the best of which she handed in for inclusion in the paper.

The columns usually came in on Monday evening. (Columnists write when they have the inspiration, and if a column is late the cause is readily passed off as simple lack of inspiration). When the evening's work was done, usually about midnight, the rest of the copy was ready for the printers.

One notable exception to the foregoing procedure

was the sports page, which operated almost independently under the charge of Jim Hall. His work went directly from him to the Tribune Office, and all makeup as well as writing was his responsibility. In the field of intramural sports, Jim had the help of Al Carpenter.

Charles Morneweck, as business manager, extolled the benefits of Campus advertising to the business men of Meadville.

After finishing touches and last minute additions of changes by members of the staff working directly at the Tribune, printing began on Tuesday afternoon. From then on, the paper was the responsibility of Ernie Andres and his circulation assistants. The week's work was done, absolutely nothing was left to do but start on the next week.

After splendid coverage of one of the most eventful years Allegheny has known, the staff was relieved by members of the Newswriting Class for the last three weeks of the term. Next year there will be some new faces, some old faces, but the same old grind.

FRONT ROW: (l. to r.) E. McFayden, J. St. Clair, S. Miller, M. L. Richey.
BACK ROW: J. Kelley, R. Andres, D. Hopper, R. Alexsaht, C. Morneweck.





BOB MUCKLEY, Editor; MIRIAM GEYSER, Assistant Editor.

STAFF REPORT

Here are the victims of a thousand sleepless nights, endless telephone calls, exasperating correspondence with printers engravers and the official photographer.

Here are those perennial unsung heroes who have matched wits, curbed tempers and suppressed screams of agony to produce your 1948 Kaldron.

So that their efforts may not have been in vain take this written testament of your experiences at Allegheny and give it a priority among the reference material of your life's accomplishments.



FRONT ROW: E. Koester, C. Sholle, R. Slosser, P. Pointer, M. Dengler, J. Phythyon.
 SECOND ROW: M. Taylor, J. Peterson, F. Baldwin, M. Geysler, R. Muckley, M. Wright, D. McClimans, E. Randolph, M. L. Richey.
 BACK ROW: D. King, L. Tompkins, R. McCrea, W. Shields, R. Landon, J. Erwin, W. Walker, W. Wylie, J. Henry, W. Thoburn, E. Ferguson, W. Wright, J. Pfeeger.



DON McCLIMANS, Business Manager.
 JACK HENRY—Assistant Business Manager.



BOB LANDON—Literary Editor.
 MARY LOU RICHEY—Corresponding Secretary.



MARTY WRIGHT—Makeup Editor.
 FILIS BALDWIN—Art Editor.



ELIZABETH RANDOLPH—Photography Manager.
 BILL WALKER—Photography Editor.

LITERARY MAGAZINE

Last fall at the first staff meeting of the Literary Magazine, Editor Bette Marsh presented the members with a problem: there just was not enough money to publish the hoped-for four issues. With Joel Rosenblum in charge, ads were solicited, and for the first time, the Lit Mag had advertisements. Even these were not enough, though, and coupled with a lack of copy, only three issues came out.

The art staff, with Filis Baldwin as editor, did a marvelous job with illustrations. Filis' surrealistic

covers were some of the best yet. Anne Hershey headed the make-up crew.

The goal of this year's staff has been a well-balanced magazine—the right number of stories, articles, book reviews and poems with as many illustrations as finances would allow. Although it may not have been the Lit Mag's most productive year, it's achievements are surely something students may point to with pride.

F. Baldwin, B. Marsh, Joe Backus, B. Pappenhagen, J. Travers, F. Hultman, A. Hershey.



A. U. C.

FRONT ROW: (l. to r.) M. Nelson, E. McFayden, J. Henderson, V. Claxton, C. Smoot, S. Miller, C. Horner, J. Leggett.
SECOND ROW: C. Steinle, F. Steinle, D. Roese, R. McCall, R. Deitsch, R. Muckley, F. Pollard, H. Crawford, D. Blyth, R. Miller.

If the real test of an efficient student body is to be based upon how well they can govern themselves when given the chance, then we have the uncontested right to be proud of ourselves this year. Inspection of the minutes of these organizations would not reveal drastic reforms or radical crusades but would show a series of cool headed and basically sound student administration within the bounds of their own constitutions.

M. U. C.



FRONT ROW: (l. to r.) P. Hughes, J. Mitchell, R. Landon, F. Richmond, H. Marshall, B. Walker, P. Swanson.
BACK ROW: R. Schaefer, R. Habich, S. Nichols, G. Marsh, H. Nixon, R. Pierson, H. Warner.



Spring



1. "Didn't anyone else have a camera?"
2. Raw, Raw, Raw!!!
3. Two down—six to go.
4. Needed—more recreation facilities.
5. What—a free moment?
6. We grow physically, too.
7. Who is that guy??

8. View of library; looking north.
9. Blind Date.
10. Slacking off.
11. Call—Cochran 227.
12. Arabesque.
13. "133 years ago Tim dropped anchor."

SENIOR CLASS

Summit Ho! This senior climbing team have at long last sunk their hooks into the top soil of a four year objective. Two hundred and thirty-six voices permeate everything within ear shot with exclamations of their jubilation. Oh, they're scarred mind you. The journey up this educator's mountain hasn't been easy. Some have fallen by the wayside through negligence of their equipment. Some haven't been able to maintain their view of the objective. On the other hand there are those who have mastered the technique of slacking and placing tension on their lines at just the right time and place. It is the reward of these stick-to-it individuals to post themselves on the pinnacles of success sharpened over the years by competitive scholarship and gaze complacently over the four years they have spent as members of the Allegheny family.

It was Dr. Beiler who informed us that in the end the first shall come last and the last shall come first. If this is a philosophy that must receive consideration during the dusk hours of our lives, what standard should we establish for ourselves now when we are preparing to go out into society and start the ball rolling? How about this—We Seniors, two hundred and thirty-six strong shall theoretically line up—We shall place our left foot out in unison and take that first step out into the contemporary world pointed in the direction of a sincere and useful life where each second, minute, hour, year and decade will be used for insulating the universe against its complexities with the serum of good old Allegheny ideals and common sense.



SENIOR CLASS OFFICERS:

V. President, E. McFayden; Secretary,
A. Edsall; President, D. Roese;
Treasurer, D. Hunt.



KATHRYN FAY ACOSTA
181 Woodhaven Drive, Pittsburgh, Pa.
Independent Women

DONALD ROY AICHNER
1444 Pearle Park, Erie, Pa.
Independent Men



GLORIA CHARLOTTE ALLEN
R. D. 1, Freeport Rd., North East, Pa.
Alpha Xi Delta

CATHERINE JEAN ANDERSON
105 Palmer Ave., Kenmore, N. Y.
Independent Women



VIRGINIA SWIFT ANDERSON
105 Corlies Ave., Pelham, N. Y.
Alpha Gamma Delta

WILLIS ROBERT ALEXANDER
691 North Main St., Meadville, Pa.
Theta Chi



FRANCES CARMEN ARTAU
113 Palmer Place, Leonia, N. J.
Independent Women

MARGARET BAILEY
116 South Mercer Ave., Sharpsville, Pa.
Alpha Chi Omega



FRANK BAKEWELL
52 Chambers Ave., Greenville, Pa.
Phi Delta Theta

FILIS LEE BALDWIN
4700 16th St., Washington 11, D. C.
Kappa Kappa Gamma

SARAH ANN BALDWIN
1829 Ohio Ave., Youngstown, Ohio
Theta Upsilon

CLARENCE D. BARE
619 Park Ave., Meadville, Pa.
Sigma Alpha Epsilon

JEANE SHILLING BARE
619 Park Ave., Meadville, Pa.
Alpha Gamma Delta

HENRY WILLIAM BARNES
843½ Park Ave., Meadville, Pa.
Phi Kappa Psi

HELEN MARIE BAUMBACH
296 Orchard Drive, Pittsburgh 16, Pa.
Alpha Gamma Delta

***ROBERT A. BEIGHEL*
Kings Highway, Rosslyn Farms, Carnegie, Pa.
Phi Gamma Delta

THEODORE WISEMAN BEILER
196 Spring St., Meadville, Pa.
Independent Men

RENEE IRENE BINDER
446 W. Englewood Ave., W. Englewood, N. J.
Independent Women

***STEPHEN R. BIRMINGHAM*
96 Buckley St., Liberty, N. Y.
Phi Delta Theta

MARY DEANNE BLYTHE
R. D. 1, Slippery Rock, Pa.
Kappa Kappa Gamma





JOANNE BOCKEL
907 Summit Ave., Johnstown, Pa.
Kappa Kappa Gamma

***NORAH PETROVICH BOLANOS*
Castilla 535, Lima, Peru
Independent Women



BETTY ANN BORGH
3738 Grosvenor Rd., Cleveland Heights 18, Ohio
Alpha Xi Delta

***JOHN MAGRUDER BOWLUS*
954 W. 6th St., Erie, Pa.
Theta Chi



ANN MAY BOYD
1033 School St., Indiana, Pa.
Alpha Chi Omega

DOROTHY BRANDOW
19 Kingsbury Ave., Bradford, Pa.
Independent Women



DONALD LEE BREBNER
2518 Cascade St., Erie, Pa.
Phi Kappa Psi

NANCY LOIS BREWSTER
2026 Guilford Rd., Columbus 12, Ohio
Kappa Kappa Gamma



COLETTE BROSKY STEINLE
110 Parkside Drive, Pittsburgh 16, Pa.
Kappa Alpha Theta

LEOTA RUTH BROWN
3 Cottage Ave., Ansonia, Conn.
Independent Women

RAYMOND E. BROWN
1619 McDowell St., Sharon, Pa.
Independent Men

RALPH MARVIN BRUGGER
921 W. 7th St., Erie, Pa.
Phi Gamma Delta

**JAY A. BRUNNER*
13400 Shaker Boulevard, Cleveland, Ohio
Sigma Alpha Epsilon

MARCIA McCLELLAND BULGER
767 E. Shady Drive, Pittsburgh 16, Pa.
Kappa Kappa Gamma

***JOHN CHARLES BURGESS*
964 G. Street, Meadville, Pa.
Phi Gamma Delta

***HELEN LOUISE BURNS*
152 W. 3rd St., Oil City, Pa.
Alpha Chi Omega

EDWARD GEORGE CAFLISCH
52 E. High St., Union City, Pa.
Alpha Chi Rho

VIRGINIA MAY CAMPBELL
243 Rieg Ave., Conneaut, Ohio
Independent Women

SHIRLEY ANN CARLSON
24 Englewood Ave., Jamestown, N. Y.
Theta Upsilon

**ALAN CHAMBERS*
344 E. Midlothian Blvd., Youngstown, Ohio
Theta Chi





****BIRD LOUISE CHURCH**
124 Greydon Ave., McKees Rocks, Pa.
Alpha Gamma Delta

DWANE M. CLARK
225 Locust St., Meadville, Pa.
Phi Delta Theta



LOIS CAROL CLARK
481 McCully St., Pittsburgh 16, Pa.
Kappa Kappa Gamma

VIRGINIA MAY CLAXTON
636 W. 174 St., New York 33, N. Y.
Independent Women



PAULINE LOUISE COLE
311 W. Pine St., Clearfield, Pa.
Alpha Chi Omega

JEAN CRISWELL
2573 Canterbury Rd., Cleveland 18, Ohio
Alpha Gamma Delta



JAMES S. CUMMINGS
R. D. #3, Bradford, Pa.
Phi Kappa Psi

CAROL CURRIER
14480 Euclid Ave., E. Cleveland 12, Ohio
Independent Women



PAUL RUSSELL DAIN
741 Washington St., Meadville, Pa.
Phi Kappa Psi

****WALTER A. DART, JR.**
620 Cherry St., Erie, Pa.
Phi Gamma Delta

SAMUEL MARK DE SANTIS
1261 Park Ave., Meadville, Pa.
Alpha Chi Rho

JAMES PHILLIPS DEVINE, JR.
1127 W. 24th St., Erie, Pa.
Sigma Alpha Epsilon

VERA MADGE DEWALD
Emlenton, Pa.
Independent Women

ROBERT BARRETT DIETSCH
100 Park St., North Warren, Pa.
Phi Delta Theta

***MARY JANE DIFFORD**
209 Homewood Ave., Warren, Ohio
Theta Upsilon

MARY LOUISA DIGEL
53 Elm St., Bradford, Pa.
Independent Women

DOROTHY L. DITTMER
500 Pine St., Lockport, N. Y.
Kappa Alpha Theta

EDWARD E. DONNER
Box 85, Riceville, Pa.
Theta Chi

***HARRIET ELLEN EASTMAN**
34 5th Ave., Union City, Pa.
Theta Upsilon

ANN SUPLEE EDSALL
3025 Fairfax Rd., Cleveland 18, Ohio
Alpha Chi Omega





MARY JANE ELWOOD
147 Burrows St., Geneva, Ohio
Independent Women

BERNARD EMERY
280 Center St., Meadville, Pa.
Independent Men



THOMAS H. ENRIGHT
Route 1, Box 211-A, Escondido, Calif.
Sigma Alpha Epsilon

PHYLLIS ANN FAIRBANK
21 Gesner St., Linden, N. J.
Alpha Xi Delta



ALDEN L. FAUDIE
405 Park Ave., DuBois, Pa.
Sigma Alpha Epsilon

WILLIAM ELDRIDGE FEISLEY
741 Shady Drive, E. Pittsburgh, Pa.
Phi Delta Theta



CARROLL EDGAR FERGUSON, JR.
3024 W. Liberty Ave., Pittsburgh 16, Pa.
Theta Chi

**FRANCISCO FERRARACCIO
424 Osborne Ave., DuBois, Pa.
Phi Delta Theta



MILDRED FINKEL
26 Linden Ave., Verona, N. J.
Independent Women

JAMES L. FOREMAN
Tionesta, Pa.
Sigma Alpha Epsilon



ROSELLA BARBARA FORKEY
1825 Jefferson St., S. Greensburg, Pa.
Independent Women

MARJORIE CORINNE FOX
3074 Livingston Rd., Cleveland 20, Ohio
Independent Women



**PERCY ALLAN FRANKLIN
472 Randolph Court, Meadville, Pa.
Independent Men

**BERNARD M. FRICK
528 Walnut St., Meadville, Pa.
Phi Delta Theta



MARY LOUISE FULTON
311 Clay Ave., Scranton 10, Pa.
Independent Women

NANCY MAYHEW FULTON
2255 Bellfield Rd., Cleveland Heights, Ohio
Kappa Kappa Gamma



JOSEPH LOWRY GADD, JR.
427 Jones St., Belle Vernon, Pa.
Delta Tau Delta

MELVIN PETER GERSENY
5123 Eastover Rd., Lyndhurst, Ohio
Phi Gamma Delta



JOAN MARILYN GRAEBER
83 Maple Ave., Hicksville, N. Y.
Alpha Gamma Delta

*DON PIERRE GRAYDON
4204 W. 48th St., Cleveland 9, Ohio
Sigma Alpha Epsilon



ANN ADAMS GREETHER
65 Grace Ave., Great Neck, N. Y.
Alpha Chi Omega

MARY LOU GRIFFITHS
2646 E. 73rd St., Chicago, Ill.
Theta Upsilon



FREDERICK GEORGE GUENTHER
420 Fairmount Ave., Meadville, Pa.
Delta Tau Delta

ALICE EVANS HAAG
5811 Elgin Ave., Pittsburgh, Pa.
Kappa Kappa Gamma



ARTHUR CLAIRE HANNA
High Street, Natrona Heights, Pa.
Independent Men

MARILYN ELIZABETH HARER
142 E. Jackson St., Painesville, Ohio
Independent Women



STEPHEN JOHN HART
1021 Edgewater Drive, Orlando, Fla.
Phi Gamma Delta

LYDIA JEANNE HARTLEY
4404 Jefferson St., Munhall, Pa.
Independent Women



***GEORGE MICHAEL HARTUNG*
633 Warrington Ave., Pittsburgh 10, Pa.
Theta Chi

**WILLIAM F. HESS*
164 Glenwood Ave., Meadville, Pa.
Theta Chi

WILLIAM REED HILL
701 Main St., Reynoldsville, Pa.
Sigma Alpha Epsilon

ELIZABETH A. HINMAN
517 Dorian Court, Westfield, N. J.
Independent Women

DAVID HENRY HODGE
341 W. 9th St., Erie, Pa.
Independent Men

***JAMES E. HOLMES*
Linesville, Pa.
Alpha Chi Rho

GEORGE ROBERT HOPKINS
Clover St., Pittsford, N. Y.
Sigma Alpha Epsilon

***RALPH WILLIAM HORTON, JR.*
Box 47, Stow, N. Y.
Delta Tau Delta

JOHN P. HOUSERMAN, JR.
7514 Graymore Rd., Pittsburgh 21, Pa.
Phi Gamma Delta

ROBERT FREDERICK HUESTON
1238 Highland Ave., Coraopolis, Pa.
Independent Men

RICHARD H. HUGHES
446 W. Main St., Brookville, Pa.
Phi Delta Theta

BERNARD TROY HULSE
1 W. Main St., Sheffield, Pa.
Alpha Chi Rho





DALLAS HUNT
198 Curtis St., Meriden, Conn.
Alpha Gamma Delta

***ROBERT E. HUNTER*
25 Manning St., Oil City, Pa.
Independent Men



MARION IRENE HYDE
Derrick City, Pa.
Independent Women

NELLIE MARIE JAMES
158 Sunset Lane, Tenafly, N. J.
Independent Women



ROY JAMES
1150 Kenilworth Ave., Warren, Ohio
Phi Gamma Delta

***RUTH SUZANNE JONES*
101 Elm Ave., Mt. Vernon, N. Y.
Alpha Gamma Delta



CHARLES WALTER JOHNSON
522 E. Main St., Youngsville, Pa.
Alpha Chi Rho

THOMAS HENRY JOHNSON
328 W. 22nd St., Erie, Pa.
Sigma Alpha Epsilon



VLADIMIR DIMITRI KASTELIDIS
Arasteh Co., Jaleh Ave., Teheran, Iran
Delta Tau Delta

ARDIS CAROLYN KAUFMAN
408 Charles Ave., New Kensington, Pa.
Kappa Alpha Theta

**JEAN KECK*
308 Broad St., Butler, Pa.
Kappa Alpha Theta

WILLIAM GEORGE KEES
1504 Versailles Ave., McKeesport, Pa.
Phi Kappa Psi

WILLIAM PAUL KEIM
756 Liberty St., Meadville, Pa.
Independent Men

ALFRED M. KERN
911 Diamond Square, Meadville, Pa.
Independent Men

CAROL KELLY
150 Parkwood Ave., Kenmore, N. Y.
Kappa Alpha Theta

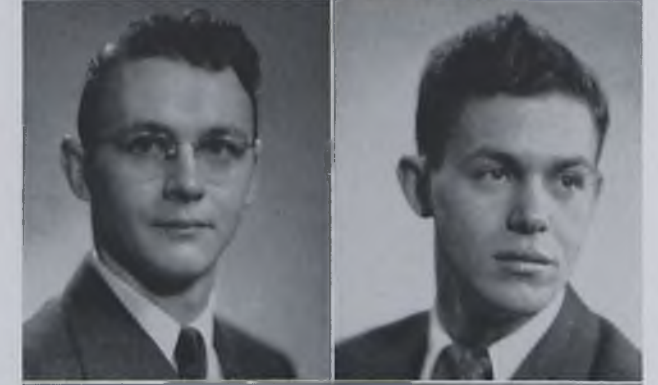
AUDREY KING
322 Allegheny Ave., Kittanning, Pa.
Kappa Kappa Gamma

PATRICIA KAISER
Shipperville, Pa.
Independent Women

BLAIR JOHN KOLASA
Fullerton Ave., Cambridge Springs, Pa.
Independent Men

ELEANOR JEAN LAUGHLIN
301 Grandview Way, Charleroi, Pa.
Kappa Kappa Gamma

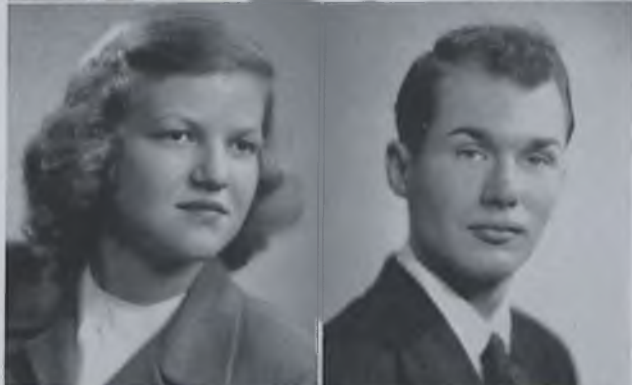
CICELY M. LAWRENCE
1320 Terrace Drive, Pittsburgh 16, Pa.
Kappa Alpha Theta





**CARL ROLAND LEVINE*
325 S. Main St., Cambridge Springs, Pa.
Sigma Alpha Epsilon

GERALD LIEBMAN
1101 Wilson Ave., Kittanning, Pa.
Independent Men



JEAN LONGANECKER
154 West Lincoln St., Waynesburg, Pa.
Kappa Kappa Gamma

WILLIAM CHARLES LORTZ
229 Euclid Ave., New Castle, Pa.
Delta Tau Delta



**RALPH R. LUFFLER*
434 Beach Ave., Cambridge Springs, Pa.
Independent Men

MARY B. MacQUOWN
622 Cascade Rd., Pittsburgh 21, Pa.
Theta Upsilon



DAVID JAMES McCAFFERTY
406 Maple Ave., Pittsburgh 15, Pa.
Sigma Alpha Epsilon

**NANCY McCANDLESS*
23 Wildwood Ave., Mt. Vernon, N. Y.
Alpha Chi Omega



CHARLOTTE McCLELLAND
640 6th St., Beaver, Pa.
Alpha Chi Omega

GERALD FREY McCLURE
626 Deer St., Dunkirk, N. Y.
Delta Tau Delta



ESTHER McFAYDEN
R. D. #2, Albion, Pa.
Alpha Xi Delta

BEVERLY JEAN McKENNETT
122 DeLacy St., North Plainfield, N. J.
Kappa Alpha Theta



RICHARD EASTMAN MADTES
697 Terrace St., #1, Meadville, Pa.
Phi Kappa Psi

DORIS MANOS
279 Prospect St., Meadville, Pa.
Kappa Alpha Theta



JOHN G. MANOS
279 Prospect St., Meadville, Pa.
Sigma Alpha Epsilon

BETTE D. MARSH
2335 S. 21st St., Philadelphia, Pa.
Independent Women



JOHN HERBERT MARSHALL
604 Chestnut St., Erie, Pa.
Phi Kappa Psi

ANNE MASSA
52 Colonial Court, Staten Island 10, N. Y.
Kappa Kappa Gamma



**FRANKLIN C. MAY*
Main St., Sheakleyville, Pa.
Phi Gamma Delta

ESTELLE EVELYN MAYERS
200 W. 86th St., New York, N. Y.
Independent Women



AUDREY MEYER
63 Tioga St., Buffalo, N. Y.
Independent Women

HOWARD E. MILLER
134 Allegheny Ave., Kittanning, Pa.
Sigma Alpha Epsilon



JANE KEIL MILLER
703 St. Johns Rd., Baltimore 10, Md.
Independent Women

SALLY CHRISTINE MILLER
263 N. E. 20th St., Miami 37, Fla.
Kappa Kappa Gamma



STEPHEN BAYARD MILLER
262 Meadow St., Meadville, Pa.
Phi Gamma Delta

JANET E. MOLVIE
1135 Hillsdale Ave., Pittsburgh 16, Pa.
Independent Women



***CHARLES MORNEWECK*
47 Chambers Ave., Greenville, Pa.
Phi Delta Theta

***ROBERT ARTHUR MORRIS*
715 Highland Ave., Meadville, Pa.
Independent Men



NATALIE MOSHER
716 Cherry St., Erie, Pa.
Alpha Chi Omega

RALPH A. NAUMAN
Glen Mitchell Rd., Sewickley, Pa.
Independent Men

PHOEBE NELMS
6347 Douglass St., Pittsburgh 17, Pa.
Independent Women

MARGIE M. NELSON
17601 Fries Ave., Lakewood, Ohio
Alpha Chi Omega

RUTH NEVILLE
2303 Brownsville Rd., Pittsburgh, Pa.
Alpha Chi Omega

ROBERT B. NEWELL
779½ N. Main St., Meadville, Pa.
Independent Men

ERNEST WALTER NEWTON
705 Baldwin St., Meadville, Pa.
Independent Men

ELIZABETH ANN NICHOLS
Ovayonda Estates, Highland Falls, N. Y.
Kappa Alpha Theta

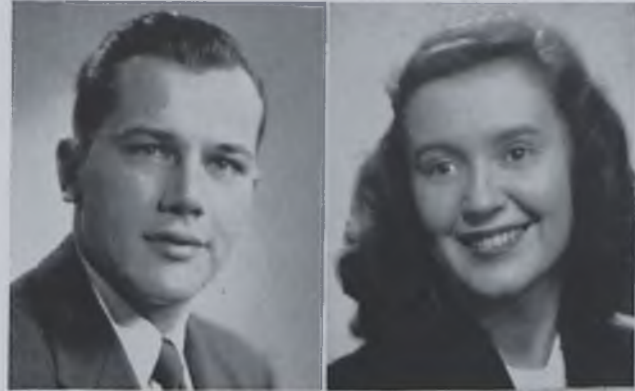
BETTY JOAN NORTON
756 Liberty St., Meadville, Pa.
Independent Women

DANIEL JOHN O'DAY
632 State St., Meadville, Pa.
Independent Men

HARRIET E. ORTH
317 John St., Roselle, N. J.
Alpha Chi Omega

**JOHN PALMER*
622 Cutler St., Meadville, Pa.
Independent Men





LEROY A. PAUL
Saxonburg, Pa.
Phi Gamma Delta

JOAN MARGUERITE PETERS
519 Miller Ave., Meadville, Pa.
Kappa Alpha Theta



SPENCER WILCOX PHILLIPS
94 Livingston St., New Haven, Conn.
Delta Tau Delta

***ROBERT HARRY PIERSON*
697 Terrace St., Meadville, Pa.
Phi Kappa Psi



CHARLES E. PIPER
220 8th St., Oakmont, Pa.
Phi Gamma Delta

MARY LEE POLLOCK
513 Elm St., Butler, Pa.
Kappa Alpha Theta



JEAN PRYDE
507 N. Jefferson St., Kittanning, Pa.
Alpha Gamma Delta

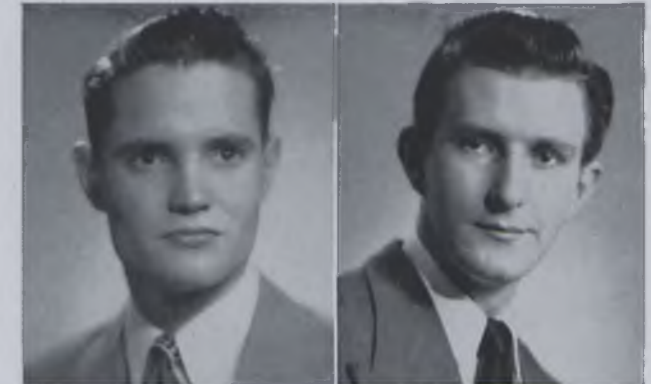
HARRY BLAIR PURINTON
705 Baldwin St., Meadville, Pa.
Alpha Chi Rho



LEWIS WILLIAM PYLE
690 Jefferson St., Meadville, Pa.
Independent Men

JAMES JOHN PYSHER
661 State St., Meadville, Pa.
Independent Men

***FREDERICK P. REDING*
302 Overdale Rd., Pittsburgh 21, Pa.
Phi Gamma Delta



VERNON J. REED
347 S. Main St., Slippery Rock, Pa.
Phi Kappa Psi

ANNABEL REGAN
414 Hess Ave., Erie, Pa.
Alpha Xi Delta



WALTER CLARK REISCH
210 Virginia Ave., Aspinwall, Pa.
Sigma Alpha Epsilon

LOIS JEAN REUSCH
17430 Scottsdale Blvd, Shaker Heights, O.
Independent Women



***FRANCIS WHITTIER RICHMOND*
301 Eagle St., Fairport Harbor, Ohio
Alpha Chi Rho

RALPH EDGAR ROBERTS
563 Green St., Meadville, Pa.
Delta Tau Delta



DAVID W. ROESE
214 Park Ave., Pittsburgh 2, Pa.
Sigma Alpha Epsilon

NANCY LUCILLE ROHRKASTE
27 Hazel Drive, Pittsburgh 16, Pa.
Kappa Kappa Gamma



JAMES R. ROOT
Box 163, Erie, Pa.
Theta Chi



**SAMUEL P. ROSE*
664 Cullum St., Meadville, Pa.
Sigma Alpha Epsilon

FRANK ROSEN
786 Washington St., Meadville, Pa.
Independent Men



JANET RYMAN
R. D. #2, Canonsburg, Pa.
Kappa Alpha Theta

KATHERYN JEAN SAYRES
R. D. #6, Knoxville, Tenn.
Independent Women



RICHARD P. SCHAEFER
230 Baywood Ave., Pittsburgh 16, Pa.
Phi Delta Theta

**DORIS ANNE SIEBERT*
22 Canterbury Rd., Great Neck, N. Y.
Independent Women



ROBERT W. SEIBERT
Airmount Rd., Mahwah, N. J.
Sigma Alpha Epsilon

***WILLIAM B. SEIDEL*
702 Delafield Rd., Fox Chapel, Pgh. 15, Pa.
Sigma Alpha Epsilon



JOAN TERESA SEIGLEY
781 Kennedy St., Meadville, Pa.
Alpha Chi Omega

JOHN BIGELOW SEWELL
635 N. Main St., Meadville, Pa.
Independent Men

HELEN JANE SHAKELY
418 Carbon St., Butler, Pa.
Alpha Chi Omega

RICHARD SHANOR
R. D. #1, Butler, Pa.
Phi Delta Theta

LORRY SHAUL
325 Cherry St., Elizabeth, N. J.
Independent Women

JEWEL JEAN SHAW
7 Merridees Circle, Great Neck, N. Y.
Independent Women

KENNETH SHICK
520 Park Ave., Meadville, Pa.
Phi Delta Theta

JULIANNE PURVIS SHICK
520 Park Ave., Meadville, Pa.
Alpha Gamma Delta

NORA LEE SHULL
5 Cherry Valley Rd., Pittsburgh 21, Pa.
Independent Women

WALTER SIGWORTH
142 Hilldale Rd., Lansdowne, Pa.
Sigma Alpha Epsilon

VERNA LOUVA SIMONSON
106 Vineyard Place, Port Jefferson, N. Y.
Independent Women

RUBIE LEONA SITTIG
285 Congress St., Bradford, Pa.
Independent Women





HARRY EDWARD SMAIL
9 Arter Terrace, Meadville, Pa.
Phi Delta Theta

ELTIE G. SMITH
150 E. 39th St., New York 16, N. Y.
Independent Women



JOSEPHINE ABBOTT SMITH
95 College Ave., New Brunswick, N. J.
Independent Women

LAVINA SMITH
R. D. #2, Belle Vernon, Pa.
Alpha Xi Delta



MABEL AGNES SMITH
McNeal Rd., Allison Park, Pa.
Independent Women

MARY LEE SMITH
64 Meadow Lane, Jamestown, N. Y.
Independent Women



CLIFFORD CLARK SMOOT
1132 Gladys Ave., Pittsburgh 16, Pa.
Phi Gamma Delta

RAYMOND WALTER STAHL
25 Conesfora Drive, R. D. #9, Pgh. 16, Pa.
Phi Kappa Psi



EMILY STELIOTES
2 Cornell Place, Pittsburgh 16, Pa.
Kappa Kappa Gamma

HELEN MARIE STENSTROM
117 Elmwood Rd., Verona, N. J.
Alpha Gamma Delta

JOHN PARKER SWANSON
147 W. Summit St., Lakewood, N. Y.
Sigma Alpha Epsilon

ARTHUR HAYEN THAYER
685 Chestnut St., Meadville, Pa.
Independent Men

THOMAS WILSON THOBURN, JR.
2729 Ashley Rd., Shaker Heights, Ohio
Phi Gamma Delta

JEAN ANN THOMAS
670 Chestnut St., Meadville, Pa.
Independent Women

JOANNE MARIE THOMAS
3833 Bainbridge Rd., Cleveland Hts., Ohio
Independent Women

DOROTHY JUNE TRAYER
3 Tuxedo Place, Cranford, N. J.
Independent Women

MARY LEW TUVE
2510 Newbury Dr., Cleveland Hts., Ohio
Independent Women

NANCY ULLMAN
266 Fairgreen Ave., Youngstown, Ohio
Alpha Xi Delta

GRACIELA JIMENEZ V.
Dante 540, Miraflores, Lima, Peru
Independent Women

WILLIAM EVERETT WALKER
1552 South Shore Drive, Erie, Pa.
Phi Kappa Psi





GERTRUDE WALTERS
14556 Superiod Rd., Cleveland Heights, Ohio
Alpha Gamma Delta

***AUDREY J. WATT*
5206 Woodlawn Place, Pittsburgh, Pa.
Independent Women



PATRICIA C. WATTS
745 Belvidere Ave., Westfield, N. J.
Kappa Alpha Theta

FLORENCE ADELE WEIR
1109 Evergreen Ave., Pittsburgh 9, Pa.
Alpha Xi Delta



PAUL WELTY
Box 398, Herminie, Pa.
Theta Chi

ELIZABETH JEAN WHEELER
2 Rau Rd., Pittsburgh 16, Pa.
Alpha Xi Delta



SHIRLEY JEAN WILEY
69 Bayview Ave., Port Washington, N. Y.
Kappa Kappa Gamma

VIRGINIA CLAIRE WINSTON
8926 Frankstown Rd., Pittsburgh 21, Pa.
Independent Women



EUGENE V. WOLSK
177 North Long Beach Ave., Freeport, N. Y.
Independent Men

PERSIS JEANNE WOODGATE
Mohawk Rd., R. D. #9, Pittsburgh 16, Pa.
Alpha Xi Delta

***HAROLD L. WOODS*
400 North Main St., Meadville, Pa.
Phi Kappa Psi

JAMES CALVIN WYGANT
R. D. #7, Meadville, Pa.
Independent Men

HOWARD ADAM YOCUM
700 Brawley Ave., Meadville, Pa.
Independent Men

PHILIP M. YOUNG
626 Walnut St., Meadville, Pa.
Phi Delta Theta

NANCY GOULD ZENN
1409 Meadow St., McKeesport, Pa.
Kappa Alpha Theta

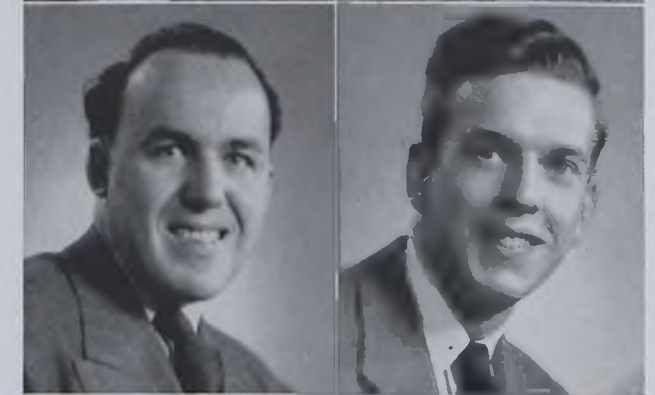
***MARTHA JANE ZIMMER*
R. D. #2, Emporium, Pa.
Kappa Alpha Theta

ALSO—

SAMUEL BARCO, ANDREW LEAK BEVIL, JR., GILBERT J. BLACK, NANCY BRIGGS, RICHARD ERWIN, FRANCIS FUHRER, JR., FRANCIS R. HASTIE, JR., FINLEY HUNTER, THOMAS HENRY JOHNSON, WILLIAM G. KEENER, ROBERT W. KEILBAUGH, ELEUTHESIOS MANOS, ANGELO MAZZA, DOROTHY JANE MERCKENS, DANIEL MORSE, SARAH ELIZABETH ORBIN, L. RICHARD PIERSEN, RUSSELL PERRY, REGIS REASBECK, JR., KENNETH SWANSON, WILLIAM SWICK, GENE W. SMOOT, VERNON C. STRIDE, JOHN F. ROBINSON, JR., CHARLES RITTER, WALTER STANTON, ROBERT R. STORMER, CHARLES E. THOMPSON, HAROLD WARNER, NEIL WINKLER.

*Indicates February graduates

**Indicates summer graduates





R. Hughes, T. Beiler, D. Brandow, M. Harer.

PHI BETA KAPPA

The initiation of four new members into Phi Beta Kappa, national honorary society, was the big event of the year for the organization. Each year a limited number of the senior class is elected on the basis of scholarship, providing the ultimate in goals for many eager Alleghenians. Well done . . . *Labore et Honore.*



The secretarial staff of Allegheny will perhaps be remembered as a group of girls who are fiendishly accurate in turning out an overdue Bookstore bill or maddeningly secretive about the contents of hour-exams which they prepare for those rough courses. They are the collective personification of efficiency plus, and it is through their hands and their ability that the nerve-centers of Allegheny function in the remarkable and productive manner which we have all profited from this year.

Take a good look at this picture; it will probably be the only time in your years at Allegheny that you have "Mrs. Joe" and Joe Raab in anything resembling "off duty". They both are fine examples of that kind of person whom we all come to depend upon for services too numerous to mention. Mrs. Johannesmeyer runs the post office in the Bentley basement with quiet and perfect efficiency; Joe Raab, although he will long be remembered for his endless repertory of jokes, can be seen everywhere, every day, doing everything from squelching a leak to tightening a bolt. We are indebted to both of them for making our life here at Allegheny move more smoothly in many, many ways.





FIRST ROW: Kelly, Benson, *McEwen, *Wylie, *Dunbar, *Montgomery, *R. Betz, McCafferty, Bowlus.
 SECOND ROW: Coach Garbark, R. Meyer, L. Meyer, *Porterfield, *D. Miller, *Feisley, *Nixon, Lamb, *J. Betz, McHolme.
 THIRD ROW: Manager Breed, Smith, Dixon, Wotherspoon.

BASEBALL

Allegheny's first baseball team since 1915 took the field against Oberlin and battled its way through six other contests without winning a game. Lacking experience, a playing field and proper weather conditions about all the Gator Squad did have was a good coach in Bob Garbark, former catcher of the Boston Red Sox and veteran of thirteen years in the major leagues.

One of the Gator's weakest spots was its pitching, however Allegheny batsmen didn't break down any fences during the season. This unsuccessful season can best be blamed on lack of practice due to an unusually rainy

spring and an acute shortage of dry baseball fields in Meadville. At any rate Baseball returned to Allegheny after a 32 year lay-off.

Allegheny	3—Oberlin	23
Allegheny	2—Alliance	10
Allegheny	9—Clarion	19
Allegheny	10—Western Reserve	12
Allegheny	4—Alliance	13
Allegheny	0—Slippery Rock	9
Allegheny	0—Geneva	2

TRACK

Gator trackmen held their own during the past season, but never managed to squeeze ahead of any of their opponents. They came closest to victory in the meet with Westminster, but the local speedsters couldn't muster the 1½ points necessary to win.

Paul Berner and Capt. Carl Roemer turned in brilliant records: Berner scored 66½ points and Roemer led his team mates with 77 points in five meets. Roemer was the only returning letterman from before the war. This blond Dutchman placed first nine times in the shot and

had two ties, while four times he threw the discus farther than his opponents. Berner score his points in the hurdles, broad jump and high jump. Both Berner and Roemer won places in the district meet.

Allegheny	53	Geneva	73
Allegheny	29 2/3	Mt. Union	87 1/3
Allegheny	53	Carnegie Tech	73
Allegheny	64 1/2	Westminster	66 1/2
Allegheny	59 2/3	Grove City	71 1/3

BACK ROW: Manager Smith, Shannor, Patterson, Sigworth, Challener, Marsh, Eastmen, Roberts, Coach Hanson, Coach Werner.
 FRONT ROW: Manos, Sayre, Stone, Carman, Hurst, *Roemer, *Glazier, *Berner, *Kraft, *McKay, *Christopherson.





Coch Way, Pollard, Gordon, Steinle, Meyers, *Radov, *Beighel, *Heilman, *Limber, *Stater,
*Tompkins, *Miller, Leibman (Mgr.)

TENNIS

Mr. Way's 1947 tennis team burned up all the courts in the district winning 9 matches and losing none. Their opponents didn't get a look in all season. They never scored more than a single point in any match. The Gators' rackets got especially hot toward the end of the season as they wound up their record in tidy fashion by shutting out Grove City and Alliance.

Captain Charlie Hileman and Barney Radov were standouts as a doubles team. They didn't lose to anyone all season.

H. P. Way acclaimed these net men the greatest tennis aggregation during the last eighteen years at Allegheny.

Allegheny	8—Geneva	1
Allegheny	9—Grove City	0
Allegheny	9—Alliance	0
Allegheny	8—Duquesne	1
Allegheny	6—Wooster	1
Allegheny	8—Mt. Union	1
Allegheny	5—Slippery Rock	1
Allegheny	8—Carnegie Tech	1
Allegheny	8—Thiel	1

*Lettermen.

The May Queen and Her Court



May Queen - Mary Louise Fulton



May Court

Emily Steliotes
Marcia Bulger

Carol Clark

Shirley Wiley
Dorothy Dittmer



Junior Charm Queen - Janet Winkler



Sophomore Charm Queen - Martha Vandewalle

THANK YOU:—

Students, for giving us your co-operation with this book. The staff and I knew very little about producing a yearbook when we undertook the job last October. If we give you your "Kaldron" late it is because we had to learn as we worked. In addition to this book we do leave a capable, experienced staff who will make next year's book the best Allegheny has enjoyed.

Dr. Julian Ross for your trust and confidence in giving us complete control over this book.

Mr. Harold Twiss of the National Service Engraving Company of Erie, for your periodical directions.

Messrs. Homer Klingensmith and Howard Bish of the Meadville Publishing Company for your concern on our delivery date.

Mr. Kurt Glaubach for your fine photographs and your honest attempts to produce a better book.

Mr. A. Humphrey and Miss Cora Pierce of Erie for your learned suggestions.

Mrs. William Schneider of Cleveland Heights, Ohio for your co-operation and trustfulness.

The Merchants of Meadville, for the ads that supplement our sparse budget.

The Staff, whose entire list of names would consist of a very large portion of the student body. Mitz Geysers' layout work, Marty's make-up and suggestions, Bill Wright's mountings, Ed Ferguson, George Strong, Charlie Piper, and Bill Walker's snapshots, Bob Landon's writeups, these and many more people have all given their best to this, our 1948 "Kaldron".

Respectfully,

Robert E. Muckley,
Editor.

Compliments
of

PELHAM ELECTRIC
MANUFACTURING
CORPORATION

Designers and Manufacturers of
Switchboards and Panel Boards
for Power and Light

ERIE, PENNSYLVANIA



**Our Teachers Mold
Our Nation's Future**

Wherever you find high standards of education you find a more progressive community, with higher standards of living and greater wealth. Education increases the power to earn and enjoy life.

Unfortunately American standards of education are slipping in many communities.

The HELP OF ALL IS NEEDED

1. Check up on educational conditions in your local schools.
2. Cooperate with organizations working to improve teachers' working and living conditions.

Only by keeping our educational standards high can we hope for a good future for our children and our land!

Trask, Prescott & Richardson Co.

State at Ninth

Erie, Pa.

Over 75 Years of
Faithful Public
Service



Meyer-Quality Is
Your Guide to
Satisfaction

Advanced College Stylings In
**CLOTHING • FURNISHINGS
SHOES • HATS**

Also Ladies' and Misses' Mantailored

SUITS • OUTERCOATS • ACCESSORIES

P. A. MEYER & SONS

ERIE'S FOREMOST CLOTHIERS

817-819-821 State St.

COMPLIMENTS OF

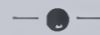
**Montgomery
Ward &
Co.**



Meadville, Penna.

COMPLIMENTS OF

"THE WILLOWS"



Popular
Spaghetti
House

**ERIE
INSURANCE
EXCHANGE**

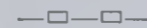
EXTRA — ORDINARY
AUTO and FIRE INSURANCE
at LESS than Ordinary Cost

HOME OFFICE—ERIE
SERVICE—ANYWHERE

Should you wish any information on
insurance protection of any
kind while in school
consult

GELVIN, JACKSON & STARR

INSURANCE AND
REAL ESTATE



Crawford County Trust Building
Phone: 41-251 Meadville, Pa.

**Meadville Buick
Company**

BUICK MOTOR CARS

862-878 PARK AVENUE
MEADVILLE, PA.



Deluxe Comfort and
Entertainment at
MEADVILLE'S FINEST THEATRE



The Pick of Pictures
Plus Perfect Sound

We Have the Retiscope
Fiber-Glass Concave Screen

EVERY SEAT A PERFECT ONE !



ERIE, PENNA.

MOBIL

**GAS
OIL**

LUBRICATION

C. W. LONG

No. Main and Baldwin Sts.
Meadville, Pa.

PHONE: 37-204

*Congratulations and
good wishes for
your continued
success*

to

The Class of '48'

*The
Crawford Store*

Allegheny College
Students

Make Our Store Your
HEADQUARTERS

Stop Here for Your School
Room Supplies as Well
As your Personal
Needs

G. C. Murphy Co.

5c to \$1.00 Store

226 Chestnut Street

FLAVO-RITE

Enriched Bread

Always a Day Fresher



Meadville Bread Co.

Phone: 27-031

1272 S. MAIN ST.
MEADVILLE, PA.

**STUDY REFRESHED
HAVE A COCA-COLA**



*Ask for it either way . . . both
trade-marks mean the same thing.*

5¢

Plus 1¢
State Tax

BOTTLED UNDER AUTHORITY OF THE COCA-COLA COMPANY BY
COCA COLA BOTTLING CO. MEADVILLE, PA.

J.C. Penney Co., Inc.

** Ψ **

A Nation-Wide
INSTITUTION

Clothing for the
ENTIRE FAMILY

GREEN'S DRUG STORE

Fresh Chocolates

Mary Lincoln — Whitman's



Kept Constantly Fresh in Our
Special Candy Refrigerator

'Let's Meet and Eat at'
THE
CAMPUS COVE
(Formerly O'Hara's)

DELICIOUS

Waffles

French Fries

Sandwiches

Sodas

Candy

Fresh Fruit Punch for Your Party

OPEN SUNDAY

164 CHESTNUT ST.

Loeffler's Flower Shop

Alfred and Mary Hammond

** Ψ **

179 Chestnut St.
Meadville, Pa.
Dial 27-981

COMPLIMENTS OF

EHRGOTT'S COFFEE SHOP



DELICIOUS FOOD

REASONABLE PRICES

MARKET STREET

Compliments of

JOHN GIZZIE
956 MARKET ST.

MONUMENTS
TILE WORK

A Gift To Be
TREASURED



PAY CASH—Buy for Less
Use Our Layaway Plan

ROBERT H. BOWLER
Jeweler

175 Chestnut St. Phone 21-134

*Congratulations
Seniors . . .*

MAY YOUR FUTURE
BE ONE OF
PEACE and HAPPINESS

GREEN & BAKER
RECORD STUDIO

MOORE MILK CO.

AND

DAIRY BAR

825 WASHINGTON STREET

Chas. A. Miller's Sons

— SHOES —

221 Chestnut Street
Meadville, Pennsylvania



In Meadville It's

BERCHTOLD'S

RECREATION
BOWLING ALLEYS

"13 Brunswick Alleys"

Phone 42-825

Above Murphy's 5c and 10c Store

Lafayette
Taxi Service

21-441

Prompt and Courteous
24-HOUR SERVICE

GREETINGS . . .

We thank you students for your patronage in the past and hope sincerely that we may continue serving you in the future.

We Wish
A Lifetime of Success
To The
Class of 1948

* * * *

WALKER'S
DRY CLEANERS

686 North Street Phone 23-161

Business and
Sportswear
for Men

Tom K. Williams

INCORPORATED

CHESTNUT AT PARK

Telephone: 40-073

WELDON

Men's Fine Clothes

178 Chestnut St.

MEADVILLE, PA.

FOR INSURANCE
and
REAL ESTATE

REMLER-SCHUMAN
AGENCY

953 South Main St.
Meadville, Pa.

Compliments of

WIRT'S

Prescription Specialists

•
Drugs, Toiletries
Luncheonette

HARLEY D. CARPENTER

291 Chestnut Street
(Opposite Post Office)

ELECTRICAL SUPPLIES
and
APPLIANCES

COMPLIMENTS
AND BEST WISHES

=====
ECKERD'S
DRUG STORE
=====

Chestnut and Park Avenue

Compliments of

Park
Shoe Store



COMPLIMENTS OF

*The City Coal &
Supply Co.*

Quality Coal
AND
Certified Ready Mix Concrete

— ● —
131 Mead Ave. Meadville, Pa.

Compliments
of

NATIONAL MARKET CO.

— ☐ —
MEAT SPECIALISTS
— ☐ —

246 CHESTNUT ST.
PHONE: 22-701

HEADQUARTERS
For
ALLEGHENY ALUMNI
And
STUDENTS

— ● —
LAFAYETTE HOTEL
and **RESTAURANT**

Meadville, Pa.

ALLEGHENY COLLEGE
Bookstore and Campus Shop

NEWEST

ON CAMPUS

S P O T
(That is)

ANYTHING, BUT ABSOLUTELY ANY-
THING—FOR STUDENT NEEDS—

BOOKS
SUPPLIES
PENS
PENCILS
SHOES
LUGGAGE
WALLETS

SPORTING
GOODS
DRUGS
TOBACCO
TOILETRIES
CLOTHING

MEET YOUR DATE

in the New and Larger

GRILL

COMPLIMENTS

OF A

FRIEND

This _____

KALDRON

PRINTED BY

The TRIBUNE
PUBLISHING CO.

MEADVILLE PENNSYLVANIA



COMMERCIAL PRINTING OF ALL KINDS



A BIRD'S-EYE VIEW
OF THE NEWLY EXPANDED
MEADVILLE PLANT OF
AMERICAN VISCOSE CORPORATION



TALON, Inc. Makers of Talon,* the quality slide fastener

Meadville

*REG. U. S. PAT. OFF.

**MEADVILLE
CITY LINES
Inc.**

**SAFE
DEPENDABLE
SERVICE**

**Carpenter's
Flowers**

931 PARK AVE.

Flowers for All Occasions

Corsages a Specialty

It's Here! The New . . .

SIGHT LIGHT

LIKE HAVING A NEW
PAIR OF EYES

Scientifically designed to put all the light where you need it — on your book or task. No stray light can spill into your eyes—because the patented eye-shade ring prevents it. The solid aluminum reflectors give more light, using a standard 100-watt bulb. In appearance, a slim, trim profile that blends with any room. You don't know it's there until you use it.



FLOOR LAMP
Model \$19.50

TABLE LAMP
Model \$13.95

at

Meadville's Most
Complete

HOME FURNISHERS

JOHN J. SHRYOCK CO.

216 CHESTNUT ST.



Home of

Metro-Goldwyn - Mayer

and

Paramount Pictures